

IN THE SUNFLOWER STATE.

From William Allen White's story of how Kansas "swore off" and of why the "swear-off sticks," in the Saturday Evening Post, we call the following facts:

Kansas consumes per capita per annum 1.25dol. worth of liquor for all purposes, as against the average American consumption of liquor of 21.00dol. a head.

Forty-eight of Kansas' 105 counties did not send a prisoner to the penitentiary last year.

Eighty-seven counties did not send an insane patient to the asylums.

In fourteen counties no jury has been called in ten years to try a criminal case.

Fifty-three counties have empty gaols.

Thirty-eight counties have empty poor-houses.

The Kansas death rate is 7 1-2 per thousand—the second lowest in America.

Bank deposits have increased in ten years from 100,000,000dol. to 220,000,000.

The average holding of taxable property is 1,666.92dol., the largest in America.

Kansas has decreased its State debt faster than any other State.

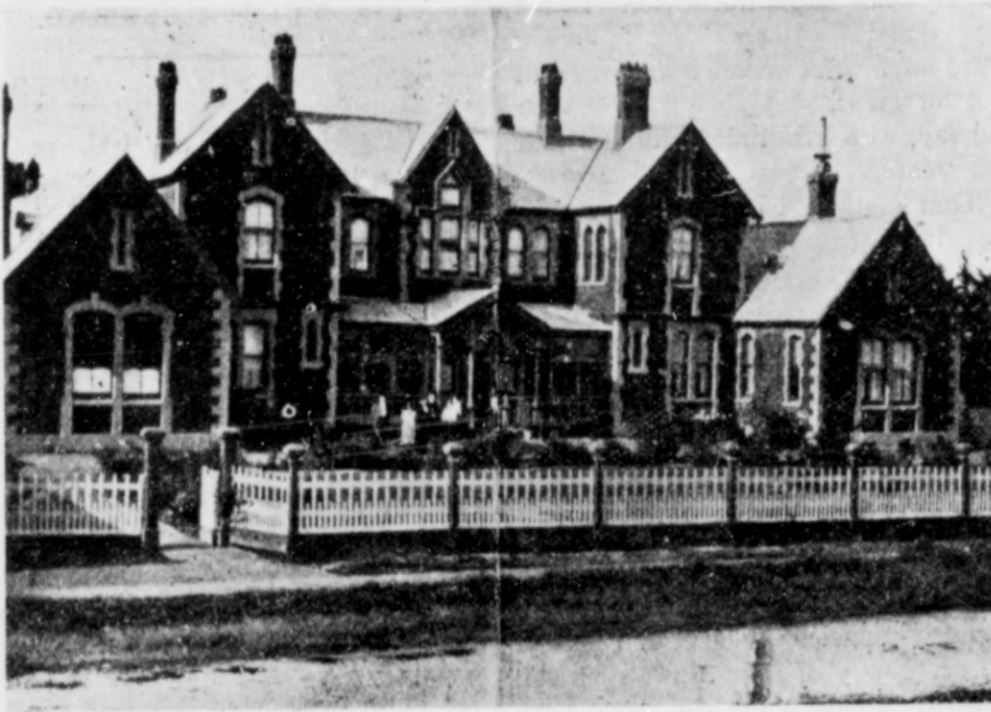
It has over 8000 students in its colleges and in other educational institutions above the high school grade—more according to population than any other State.

It has 39,468 students in the high schools.

"Thus, we find," says Mr White, "that the State having the largest number of students in colleges, according to population, having next to the lowest death rate, and having the smallest State debt in proportion to its population, is the State in which the smallest average expenditure is made for liquor. We have saved about twenty dollars a head from our liquor bill to spend for things worth while."

LIQUOR ADS. IN COLLEGE PAPERS.

Liquor advertisements were barred from publication in college newspapers of the United States by the Associated College Newspaper Publishers' Convention, held August 27, at Columbia University.



LADIES' AND GIRLS' HOSTEL, BOWMONT ST., INVERCARGILL.

The magnificent block of buildings known as Amethyst Hall, Bowmont Street, has been opened as a ladies' and girls' hostel, and all its splendid appointments placed at the service of High School girls and others.

There are 22 lofty, well-furnished rooms, halls, flower gardens, orchard, tennis and croquet lawns, playground, four bathrooms, play-room, etc., etc. Close to South School, which has such a high record for educational advantages, and near to the Girls' High School.

The Principal is Miss Pyle, who has had exceptional experience, and is well qualified to cater for and take care of girls. A good table kept.

The terms are remarkably low: 12 6d from Monday to Friday; 16s for a full week.

Ladies coming to Invercargill and wanting a beautiful home to stay at can also be accommodated at 25s per week.

For further information, apply to Miss Pyle, Principal, Bowmont Street, Invercargill.

YES!

Is life worth living?

Yes, so long as there is wrong to right,

Wail of the weak against the strong,
Or tyranny to fight;

Long as there lingers gloom to chase,
Or streaming tears to dry,

One kindred woe, one sorrowing face
That smiles as we draw nigh;

Long as a tale of anguish swells
The heart, and lids grow wet,

And at the sound of Christmas bells
We pardon and forget;

So long as Faith with Freedom reigns
And loyal Hope survives,

And gracious Charity remains
To leaven lowly lives;

While there is one untrodden tract
For Intellect or Will,

And men are free to think and act,
Life is worth living still.

BEER DRINKING A MENACE.

(Mr Daniel A. Poling.)

Science has demonstrated, first in the laboratories of Germany and later in the university and private laboratories of our own country, that one dram of alcohol, the equivalent of one drink of whisky, may so effect the eye that the power to distinguish colours is lost, the ability to distinguish red being first destroyed. One drink of whisky taken by an engineer before going out on his run may plunge a train into an open switch! And engineers have testified truthfully that they saw no red light when it was conclusively proven that the signal was set against them.