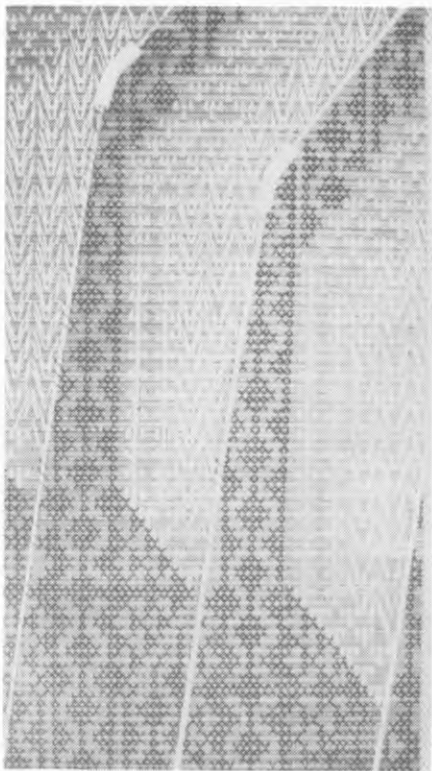


Te Poho o Tipene

Below and far right: Flanking each side of the doorway inside the hall are two sculpted figures of Tane and Tangaroa. Tane was known as the male element in nature or as the god of light. Tangaroa was Lord of the Ocean.



Above: Tukutuku — Kaumoana. Three stern posts have been woven in this panel to support Tutara Kauika.

Below: Tukutuku — Te Hokai. “Ka pu te ruha, ka hao te rangatahi”. The basic elements for this panel are the Poutama pattern and the subdued figure in the background. The figure represents the old order which has been replaced by the new.



A unique project to create a carved wharenui out of the existing assembly hall at St Stephen's School, Auckland has recently been completed.

On March 5, this year Te Poho o Tipene was opened by the Governor General, Sir David Beattie.

The principal, Mr 'Scotty' McPherson says it was the culmination of approximately four years work and the financial backing of the St Stephen's and Queen Victoria Schools Trust Board.

The aim was to have a whare whakairo at St Stephen's that captured the past and present of the school and this has been achieved.

A commemorative book has been published fully illustrating the carving.

Below: This carving depicts an old-boy of St Stephen's, Bishop George Selwyn. He is depicted with the crozier and two manaia into each shoulder representing his closeness to God.

