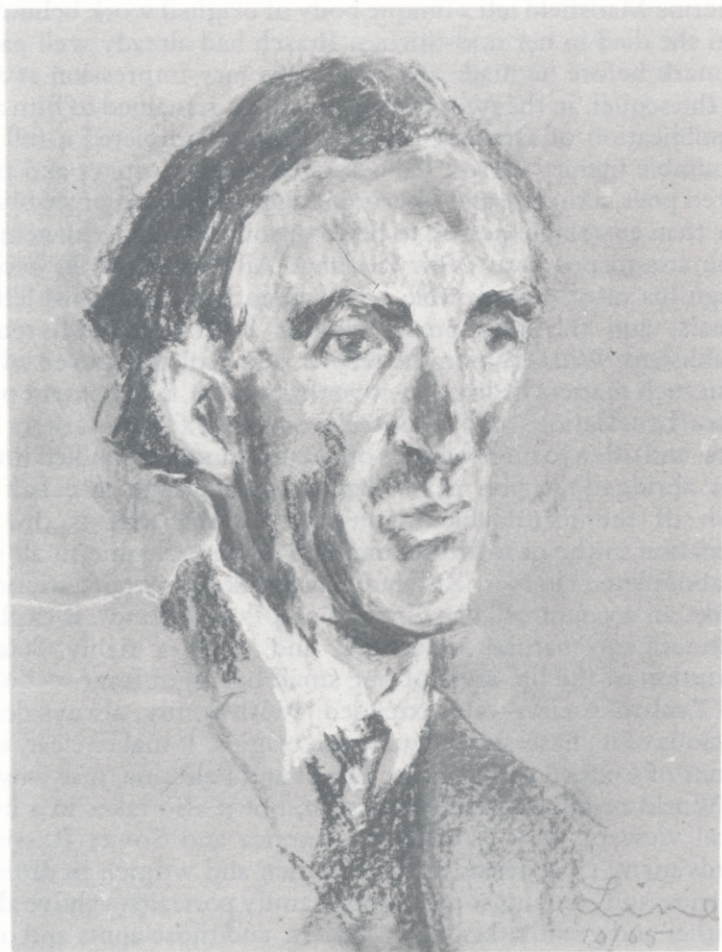


Zealand autobiographies that is also a work of art. It establishes Charles Brasch firmly in his family setting, his national and international heritage, and his cherished hopes for a New Zealand that might at last learn to recognize itself in the original work of its painters, composers and writers. It is, as we might expect, a modest, careful, and truthful book, but illumined throughout by a unique sequence of landscapes and 'epiphanies' in which a painter's eye, and a poet's feeling for language, are often happily combined. In this work, the younger Brasch is as clearly and candidly exposed as he will ever be, and a whole chapter of New Zealand cultural history is definitively written.



*Lina Bryans [Portrait of Charles Brasch] 1965. pastel 57.5 x 42 cm Art Coll. Rack 197. Lina Bryans, a cousin of Charles Brasch, did this painting on his visit to her in Melbourne, October 1965.*