

## 4YA

10.0: Selected recordings.  
 10.15: Devotional service.  
 10.45: Lecturette, Miss I. Finlay, "Cooking and Recipes."  
 12.0: Lunch music.  
 12.30: Relay of Community Singing from Empire Theatre.  
 2.0: Selected recordings.  
 3.15: Lecturette, Miss Hazel Johnson, "More Dress-making Hints."  
 3.30 and 4.30: Sports results.  
 5.0: Children's hour, conducted by Aunt Sheila.  
 6.0: Frank Westfield's Orchestra, "Lilac Time" Selection (Schubert-Berte).  
 Marek Weber and His Orchestra, "My Darling" Waltz (Waldteufel).  
 Grand Symphony Orchestra, "Tales of Hoffmann" Barcarolle (Offenbach).  
 J. H. Squire Celeste Octet, "Funeral March of a Marionette" (Gounod, arr. Sear).  
 6.18: New Concert Orchestra, "Vienna Maidens" Waltz (Zehrer).  
 Berlin State Opera House Orchestra, "Praeludium" (Jarnefeldt).  
 Regimental Band of H.M. Grenadier Guards, "The Smithy in the Woods" (Michaelis).  
 New Queen's Hall Light Orchestra, "Petite Suite de Concert"—(1) La Caprice de Nanette; (2) Demande et Res-

4YA-8.32.

# "THE PRINCESS AND THE WOODCUTTER"



A studio presentation of A. A. Milne's phantasy by the Garrick Players. Cast: Princess, Miss L. Faulkner; King, Mr. K. W. Donaldson; Queen, Miss H. Edwards; Red Prince, Mr. Napier Howard; Blue Prince, Mr. Gordon Jay; Yellow Prince, Mr. J. Tannock; The Woodcutter, Mr. G. Williams.

ponse; (3) Un Sonnet d'Amour; (4) La Tarantelle Preillante (Coleridge-Taylor).

6.41: Selected recordings.

7.0: News and reports.

7.30: W.E.A. Session: Miss Fyfe, "Oysters."

8.0: Recording, De Groot and the New Victoria Orchestra, "Other Days" (arr. Finck).

8.10: Part Songs, The Dunedin Glee Singers (Mr. H. P. Desmoulin, Conductor), (a) "Orpheus with His Lute" (McFarlane); (b) "To Blossoms" (Roberts).

8.17: Recording (Organ), Terence Casey, "The Irish Organist" (arr. Casey).

8.25: Humorous Part Song, The Dunedin Glee Singers, "Gallop Away" (Lee).

8.28: Recording, Dajos Bela Orchestra, "I Love You" Waltz (Waldteufel).

8.32: Presentation of the Phantasy,

## DUNEDIN

"The Princess and the Woodcutter" (A. A. Milne) by The Garrick Players. Cast: Princess: Miss L. Faulkner; Queen, Miss H. Edwards; King: Mr. K. W. Donaldson; Red Prince: Mr. Napier Howard; Blue Prince: Mr. Gordon Jay; Yellow Prince: Mr. J. Tannock; The Woodcutter: Mr. G. Williams.

8.52: Recording, The Salon Orchestra, "Reminiscences of Vienna" (Strauss).

9.0: Weather report and notices.

9.2: Talk, Mr. W. H. Carson and His Orchestra, "Famous Murder Trials"—"Browne and Kennedy."

9.19: Recording, Jack Hylton and His Orchestra, "The Selfish Giant" (Coates).

9.27: Part Songs, The Dunedin Glee Singers, (a) "Why are all pale the Roses

Seen" (arr. McFarlane); (b) "Court But the Lovely Flowers" (arr. McFarlane).

9.33: Recording, Band of H.M. Grenadier Guards, "Wembley Military Tattoo" (Trdl.).

9.42: Part Songs, The Dunedin Glee Singers, (a) "The Lost Chord" (Sullivan); (b) "Smilin' Through" (Penn).

9.50: Recording (Novelty Piano), Beryl Newell, "Black-eyed Susan Brown" (Magidson).

9.53: Part Song, The Dunedin Glee Singers, "The Party Kiss" (Pinsuti).

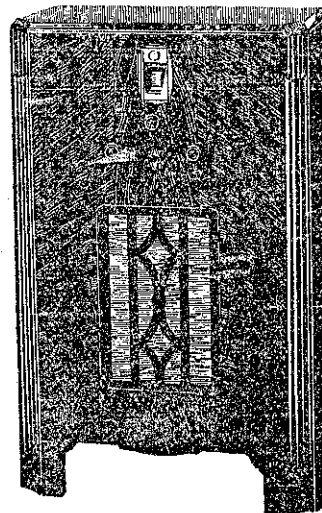
9.57: Recording, Sydney Baynes and His Orchestra, "Kentucky Home" (arr. Baynes).

10.1: Close down.

The New

# STC

Standard Telephones and Cables (Asia) Ltd.



New countries. Distant stations.  
 Clear, faithful reproduction.  
 The new S.T.C. Superheterodynes in beautiful cabinets.  
 Hear for yourself — Free home demonstration and terms by arrangement. 1933 S.T.C. models from £18-15-0.

# Standard Telephones & Cables