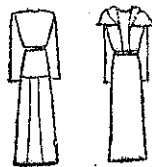


When Chill Spring Breezes Blow



2299—Coat and skirt with panelled skirt and high-necked blouse. Material required: coat, two and a quarter yards 36-inch. Skirt: two yards of 36-inch and one and five-eighths of a yard of 36-inch for blouse. To fit size 36-inch bust. Other sizes, 32, 34, 38 and 40-inch bust. Width at hem, one and seven-eighths of a yard. PAPER PATTERN 1/-.

2280—Frock with high neckline and shoulder cape. Material required, four and one-eighth yards of 36-inch and half a yard of 48-inch fur trimming. To fit size 36-inch bust. Other sizes, 32, 34, 38 and 40-inch bust. Width at hem, one and three-quarter yards. PAPER PATTERN, 1/-.

The patterns for the garments featured on this page are obtainable from:—

PATTERN DEPARTMENT
"N.Z. RADIO RECORD"
P.O. Box 1032
WELLINGTON.

2188—Frock with magyar sleeves. Material required three and seven-eighths yards of 36-inch and half yard of 36-inch contrasting. To fit size 36-inch bust. Other sizes, 32, 34, 38, and 40-inch bust. PAPER PATTERN, 1/-.

2149—Three-quarter coat with double sleeves; also stand-up fur collar. Material required, three and seven-eighths yards of 36-inch and three-eighths yards of 48-inch fur trimming. To fit size 36-inch bust. Other sizes, 32, 34, 38, and 40-inch bust.