

# CROSLEY

**Pentode Output . . . Variable Mu  
Full-Size Dynamic Speaker . . .**

## **SUPERHETERODYNE**

### **BIJOU**

**T**HIS receiver is an entirely new development of the Radio Art. It is a new Midget Model, mounted in a handsome all wood walnut and walnut veneer cabinet, two-tone and high lighted, of the highest quality of construction.

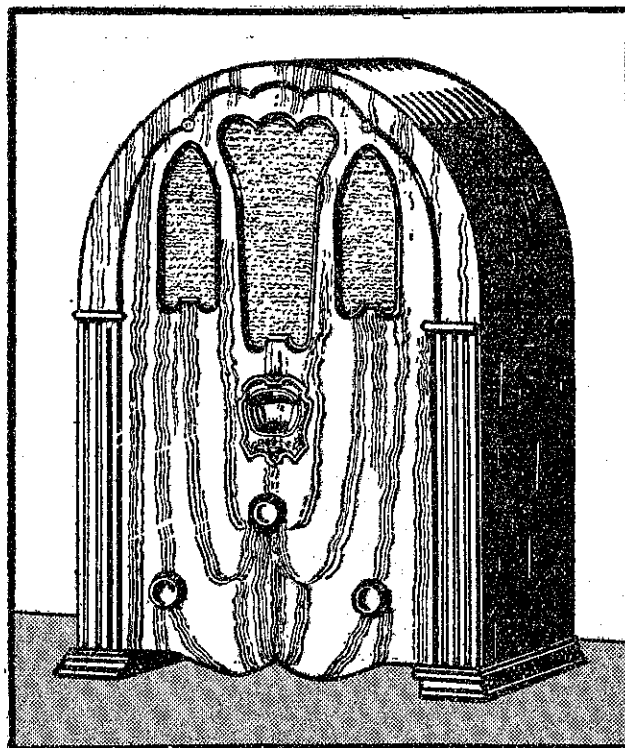
This set is a 5-valve Superheterodyne, including **FOUR SCREEN-GRID VALVES**. There is one of the new Variable Mu valves, type 235, two type 224 Screen-Grid Power Detector Valves, one type 247 Pentode Output Valve, and one type 280 Full Wave Rectifier Valve.

Many other features usually found only in sets at much higher prices are included.

An illuminated dial, actuated by a vernier drive makes reading the dial easy. The volume control, of the dual action type, and extremely smooth in operation, is combined with the switch. Resistance coupled audio is a feature and also electrolytic condensers. An excellent tone control circuit gives a rich bass and a brilliant treble. Exceptional sensitivity and selectivity cause all who see and hear the Crosley Bijou to marvel at it.

This set has dynamic speaker giving excellent reproduction.

Dimensions of the Bijou are 17½ in. high, 13 in. wide, and 8 5 16 in. deep.



**The Crosley 5-Valve Bijou Superheterodyne  
including famous National Union Valves**

**N.Z. Representative      £24 complete      Send for Free Catalogue**  
**MILES NELSON, Brunswick Buildings, Queen Street, AUCKLAND**