

## Public Relations

(Continued from page 7.)  
unanimously resolved:—"That this committee places on record its high appreciation of the work of the staff for the help and co-operation that has at all times been so readily given to them, and records also a special word of thanks to the secretary of the committee (Mr. J. Ball)" and "That a record be made of the thanks of this committee to the organiser for the excellent work she has done, and to the ladies and gentlemen who in the voluntary capacity of aunts and uncles have given so generously of their time and talents for the benefit of the thousands of unseen young folk whom they have served so well."

It was also resolved that Messrs. Carpenter and Morgan be nominees of the committee as North Island members of the proposed Advisory Council.

AT the largely attended meeting of the 3YA Children's Session Advisory Committee, the following were present: Mr. D. E. Parton (Y.M.C.A.) (in the chair), Rev. F. Tooley (Uncle Frank), Messrs. A. J. McEldowney (Y.M.C.A.), E. J. Ward (Uncle John), V. French (Presbyterian Social Service), R. J. McLaren (Uncle Dick), A. G. Thompson (Uncle Alf), W. A. Rumbold (Headmasters' Association), D. Dickson (Junior Scottish Society), J. Mackenzie (Station Director), K. Atkinson (Administrative Staff), C. S. Booth (Chuckie), Mesdames R. J. McLaren ("Ladybird" and National Council of Women), A. Tomlinson (Society for Protection of Women and Children), D. James (Welsh Society), B. McEachern (Cousin Beatrice), J. Schenkel (Mothers' Union), S. Parr (Mother Hubbard), Misses K. Scotter (Boy Scouts), and M. Hall (Secretary and Children's Organiser). Apologies were received from the general manager, Mesdames Meddings and Williams and Mr. W. Thomas.

On the motion of Mr. French, seconded by Mrs. McLaren, it was unanimously resolved that a letter be sent to the general manager expressing the thanks of the committee and expressing regret that it is the end of the committee's service to the company.

It was further resolved on the motion of Mrs. Parr, seconded by Mrs. McLaren "That our appreciation of the very efficient services of the Children's Organiser, and the pleasure of the Aunts and Uncles in working with her, both in the studio, and on the Advisory Committee be placed on record. This motion was carried with musical honours."

AT the meeting of the 1YA Musical and Dramatic Advisory Committee the following were present:—

Messrs. A. B. Chappell (Dickens Fellowship) (in the chair), C. Tucker (Radio Dealers' Association), V. Trask (Athenian Club), E. D. Robins (University Students' Association), O. Jensen (Society of Musicians), E. B. Elterm (Lays Institute), W. H. Graham (Grafton Dramatic Club), E. Blair (W.E.A.), F. L. Armitage (Little The-

atre Society), L. E. Lambert (Bohemian Orchestra), and F. M. Price (Aeolian Orchestra), Misses G. Bertram (League of New Zealand Penwomen) and J. Parker (Piano Students' Association), Messrs. H. C. Trim (Programme Organiser), and L. C. Barnes (Station Director). Apologies were received from Messrs. W. Colman, J. F. Montague and C. B. Plummer. The chairman made reference to the resolution passed at the previous committee meeting, expressing appreciation of the co-operation of the company.

On the motion of Mr. Tucker, seconded by Mr. Lambert, the committee unanimously passed a resolution expressing appreciation of the enthusiasm, ability and diligence of the staff, of their courtesy and helpfulness and the pleasant relationships throughout their and their predecessors' terms of office.

AT the meeting of the 2YA Musical and Dramatic Advisory Committee there were present: Messrs. E. Palliser (chairman), L. J. Retallick (Apollo Singers), J. Carr (Charley's Aunt Club), R. Lyon (Ophan's Club), W. P. McLachlan (Competitions Society), W. A. Jamieson (Theatrical and Operatic Society), H. B. Robb (Orpheus Musical Society), V. R. Bennett (Harmonic Society), I. M. Levy ("Radio Record"), and J. Ball (Station Director).

On the motion of Mr. Retallick, seconded by Mr. Levy, it was unanimously resolved that the committee before disbanding, express its appreciation of the Radio Broadcasting Company in recognition of the pleasant association with the company, and of the many courtesies received at its hands. Further appreciation was expressed of the 2YA staff and regret at severance of what has been a very pleasant association.

The chairman expressed his personal appreciation of the many courtesies extended by members.

AT the meeting of the 3YA Musical and Dramatic Advisory Committee the following were present: Messrs. S. Williamson (Musicians' Society) in the chair, G. Manning (W.E.A.), W. H. Dixon (Royal Christchurch Musical Society), H. J. Loughnan (Male Voice Choir), K. Atkinson (Administrative Staff), and J. McKenzie (Station Director).

On the motion of Mr. Loughnan, seconded by the chairman, it was unanimously resolved, "That this committee desires to place on record its appreciation of the assistance the company has extended through the subsidy scheme to the societies represented, and is grateful for the enthusiastic manner in which the company has acted on all suggestions made by this committee."

On the motion of Mr. Dixon, seconded by Mr. Manning, a vote of thanks was carried to the officials who met them around the table in committee, and Messrs. Booth, Mackenzie and Atkinson, and Miss Evans, were wished the best of luck.

The meeting accorded the chairman a vote of thanks and appreciation for the way he had conducted the meeting.

## Picnic Portable

(Continued from last week.)

MAKE sure that all holes drilled in the aluminium baseboard have been smoothed off with a larger drill. This is important, for the sharp edges left are quite likely to cut through the insulation and cause serious shorts.

After making sure that the "B" battery voltages are only across points that they should be, connect aerial, earth and speaker, not worrying about the frame antenna for the present, and insert the valves and coils.

If the set is operating correctly, and a good aerial and earth is used, it

tion should be firmly secured in place with two strips of wood, one at each end of the panel, as shown in the photograph. It is advisable, before slipping the set into position, to place at the bottom of the cabinet a piece of thin rubber matting or corrugated cardboard, to absorb any jolts to which the set might be subjected.

In the four corners of the lid pieces of wood  $\frac{1}{2}$  in. square section are mounted of such a length that the speaker baffle, when in position, fits flush with the sides. The baffle is fastened to these means of four screws.

The next task is to prepare the speaker baffle, which is built of ply wood. Constructors will have to use their own ingenuity largely in this matter, as with different types of loudspeaker units, different schemes of fretwork decoration will have to be adopted, because the mounting screws of the unit will not be in the same positions in every case. The main point to watch is that the driving rod is in the exact centre of the baffle. The speaker used in our model had an aluminium chassis; but all of this, with the exception of the portion holding the cone itself, was cut away to prevent it having any harmful effect on the inductance of the frame antenna. This rather drastic step, however, is not absolutely necessary, as the difference in efficiency is only slight.

The loudspeaker cord is taken out through a hole in the fretwork and is held in position round the side of the cabinet by means of small staples. This is clearly shown in the photograph. The fretwork is covered at the back with brown silk, the unit then screwed in position, and the loudspeaker cone mounted. Do not forget to attach the driving rod securely to the cone.

The next task is to build the frame on which the antenna is wound. This consists of four pegs, three inches long, braced by thin slats. A number of saw cuts, placed 1-8 in. apart, are made in each of the pegs to hold the windings in place. The wire used is either 23/36 silk covered frame antenna wire, or Litz wire. One end is attached to the bottom right hand peg, close in to the baffle, and the winding commenced. Twenty-four turns are put on, and the wire then anchored to the peg from which the winding was commenced, and both ends are taken out from the set through a hole made by cutting the bottom right hand corner of the baffle off. One of the ends is connected to the chassis of the set, and the other is taken to the correct terminal of the three-point switch. The baffle board is now placed into position and screwed down.

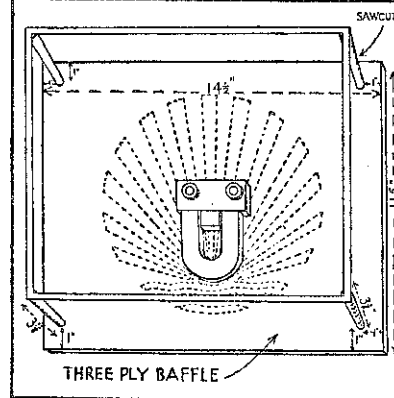
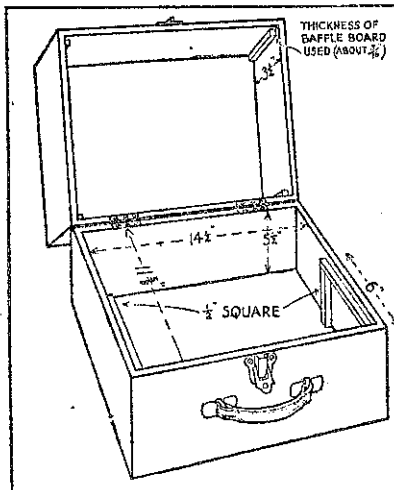
To make the job neater, the loudspeaker cord is taken to a cord connector mounted between the set and the "B" battery, on the left-hand side of the cabinet and about 2 in. from the bottom.

### The Set's Capabilities.

GOOD loudspeaker strength may be expected from the "Picnic Portable," 30 or 40 miles distant from a powerful station, and, when using a temporary aerial slung between two trees and an earth, over much greater distances, which will, of course, depend upon the efficiency of the aerial.

### D.X. NOTEPAPER.

Makes sending for verifications easy.  
Per two dozen lots, 1/6 posted.  
Per 6 dozen lots, 4/- posted.  
Box 1032, Wellington.



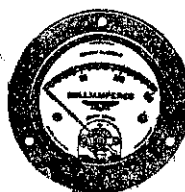
The carrying case and rear view of the speaker.

should be possible to tune in on the speaker a number of the larger Australian stations, though it must be remembered that with the approach of summer, dx conditions are in general growing more unfavourable. When the set is going all right it should be laid aside and the work commenced on the cabinet, speaker baffle and frame antenna.

### The Cabinet and Speaker.

THE next job to tackle is that of making the cabinet, the speaker baffle, and the frame for the antenna.

The cabinet should be built to the dimensions given in the sketch. Note that these are all internal. Light timber, 3-8 in. thick, should be used. If the constructor has had no experience in woodwork, it would perhaps be better to have this portion of the set built by a cabinetmaker. The set slides into the cabinet on two half-inch square section pieces of wood screwed to the sides of the cabinet, and when in posi-



There is a JEWELL Measuring Instrument for every type of Radio and Electrical Requirement. If unable to obtain, write direct to—



Factory Representatives for New Zealand  
ABEL, SMEETON, LTD., Customs Street East, Auckland.