

## Short-wave Notes

## Shortwave Broadcasts From Java.

THE test programmes on several short-wave lengths from the Dutch East Indies, reported upon in our page on October 23, have concluded. Regular programmes are to be transmitted, wave-lengths, hours of transmission, etc., having not yet been arranged. The address of the station is N.Z. Nederlandsch, Indische, Radio Omroep, Moatschappij, Tandjong, Priok, Zuiderderweg, Batavia, Java, D.E.I.

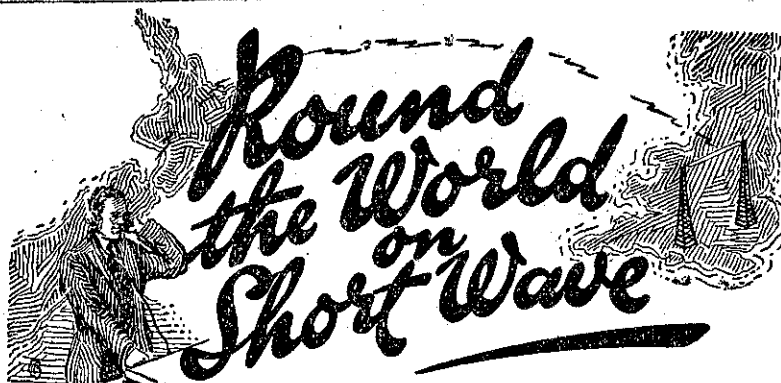
## Shortwaves From Honolulu.

QUITE a lot of music and talk has been heard during the last few days from stations KRO, Honolulu, Hawaii, on 51.37 metres. I heard them first on Sunday, November 8, at 7 p.m., when records were being transmitted. Reception was excellent, being R8-9, with one stage of audio. Beside giving their call, KRO, and frequency, Riverhead, Long Island, New York, was called and asked for a report for the transmission. The test programme was still on at 10 p.m., but signals were not as strong, and static became severe. On Thursday, November 12, another long test was heard, this time with W3XL, Boundbrook, N.J., from 6 p.m. Volume again was good. The exchange of programmes was being arranged, W3XL to transmit a typical New York programme from 4.30 p.m. our time on Sunday, November 15, "for the boys down there," and from KOR to "put over" typical Hawaiian music from 5 p.m. for 15 minutes. In arranging these transmissions, so that no mistake should be made in the time, Eastern standard, Pacific standard, Hawaiian local, and Greenwich mean time were given as a check.

## Hawaiian Music via America.

THE special programme was not quite in the order mentioned. It was in the nature of a programme dedicated to Station KGU, Honolulu, and broadcast by the National Broadcasting Company on their coast-to-coast network of stations. It was announced that it was the 110th anniversary of the first settlers of New England arriving at Hawaii.

The first part of the programme originated in New York. The next was from the studio of KGU in Honolulu, from which native music, instrumental and vocal, was broadcast. This the announcer stated travelled 5000 miles to New York, 2000 miles over the air to California, and 3000 from there to their studios—and in our case 9000 miles back to Wellington; 14,000 miles in all from Honolulu before it reached us. This portion of the programme was not so clear as the other, but considering the distance, rebroadcast, land lines, etc., it was quite good. Later, the programme originated at KGO.



THIS page is conducted in the interests of shortwave enthusiasts. A weekly log comprising notes of reception and interesting topical events is contributed by Mr. F. W. Sellens, Northland, Wellington, but all listeners are invited to send in paragraphs of general interest.

San Francisco. This, of course, was carried by land line to 3XL at New Jersey.

The special broadcast concluded at 5.30 p.m., after which "we are now going over to the Edgewater Beach Hotel, Chicago, where you will be entertained by dance music by Paul Whiteman, etc., was announced.

Reception was R8-9. Static was troublesome.

## The Armistice Service From London.

I HAVE listened to several Armistice Day services from London, via G5SW, but never before has one been so well received as on last Wednesday. At 10.15 p.m. the carrier of G5SW was heard at great strength, with the usual surge, but not nearly so bad as usual; in fact, it promised to be quite good for the special transmission to follow. Nothing was heard, except the "tuning whistle," a high-frequency note which is put on the air to enable listeners to tune in properly, till 10.30 p.m., when the Greenwich time signal—6 dots—was broadcast. This was followed by the usual opening call, and the announcement of what was going to take place, giving the order of the service, etc.

They then went over to the Cenotaph where the massed Guards Bands played selections till the service proper was ready to commence at about 10.50 p.m. Most listeners will know what followed, as 2YA took up the relay at this time, and continued till 5SW signed off about 11.10 p.m. Readability was good all through, the prayers by the Bishop of London, and the military orders were very distinct.

Volume was all that could be desired, being quite loud on the speaker. The rebroadcast by 2YA from my place was successful.

## Log for Week Ending Nov. 14

THIS log does not include any station heard on commercial telephone service.

RV15, Siberia, 70.1 metres.—Every evening at good volume.

KRO, Honolulu, 51.37 metres.—Sunday and Thursday as reported earlier in these notes; also on Friday from 5.30 p.m. till 9.30 p.m.; R7 all through, but very noisy and gushy.

HVJ, Vatican City, 50.26 metres.—Each morning from 7 a.m. Usually R9, with excellent quality.

RW59, Moscow, 50 metres.—R8-9 at 6.30 a.m., but very weak by 7 a.m.

W9XF, Chicago, 49.83 metres.—Reaches R8-9 by 5.30 p.m., but has been very noisy lately.

ZL2ZX, Wellington, 49.5 metres.—Monday, Thursday, and Saturday; always good volume.

W8XAL, Cincinnati, 49.5 metres.—Each afternoon, reaching best volume, R8-9, by 6 p.m., but usually mushy. At night, from 11.30 p.m., their volume is R9; the quality also is better than daylight reception.

W2XAF, Schenectady, 31.48 metres.—Reaches R8 by 4 p.m. Quality quite good, except for slight surging.

WIXA2, Springfield, 31.35 metres.—Only heard on Sunday and Monday at 4.30 p.m., and then only just audible.

VK2ME, Sydney, 31.23 metres.—Sunday from 5 p.m., and again on Monday morning at R9.

G5SW, Chelmsford, 25.53 metres.—Very poor each morning at 7 a.m., but at 12.30 a.m. it is quite good. On Monday night I heard their carrier at 11.30 p.m., but nothing was doing till 12.30 a.m., when, after the usual call, the next day's programme was given, but no mention was made of the Armistice service. Big Ben was heard striking the half-hour. Reception was quite good at R7-8. After the Armistice service, reported elsewhere, 5SW closed till 12.30 a.m., when it came back again at R7, still with the surge, as earlier, but quite good.

12RO, Rome, 25.4 metres.—Not heard much now; Monday, Wednesday, and Friday weak and gushy at 8 a.m. This appears to be the peak period, as I have not heard much of them before or after this time.

W8XK, Pittsburgh, 25.25 metres.—Sometimes heard during the afternoon, but usually closes before reaching readable volume.

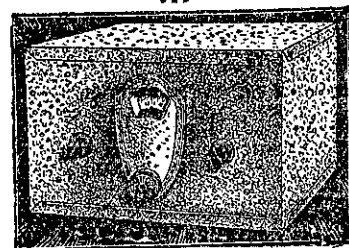
25.7 metres (about).—Monday, midnight, talk and music at R2-3. Could not catch any call.

FYA, Paris, 25.2 metres.—Varies a lot in volume. Monday, 8 a.m., R2 only. Tuesday, 7.45 a.m., R8, with rapid fade. Wednesday, 6.45 a.m., R8, very rapid fade; no sign at 7.30 a.m. Saturday, 6.30 a.m., R6, rapid fade. Not heard on other mornings.

Russian (?), 25.2 metres (about).—Sunday, 10 p.m., R9; static very bad. Same programme as RV15.

## Turn your Set into a Powerful SHORT-WAVE RECEIVER!

Enjoy short-wave reception, too! With the Silver-Marshall 738 Converter you can turn your ordinary set into a powerful short-wave receiver—without fuss or bother, in a few minutes. And every bit of the sensitivity and selectivity possessed by your receiver contributes to the short-wave performance—giving results never before achieved. Call in and let us show you this outstanding Silver-Marshall product.



with the...

## SILVER-MARSHALL

### 738 SHORTWAVE CONVERTER

N.Z. Distributors:

THOS. BALLINGER & CO., LTD.,  
VICTORIA STREET, WELLINGTON.

## PREPARE FOR THE ADVANCE

IN

## BROADCASTING

AND RECEPTION OF

## INTERNATIONAL

## PROGRAMMES

Consult MACKS for all Alterations, Improvements or Repairs needed to

ALL MAKES OF SETS.

## MACK'S RADIO SERVICE

77 KENT TERRACE,  
WELLINGTON.  
Tel. 28-779.