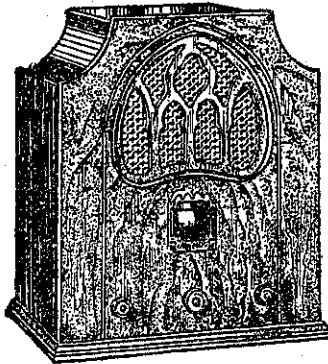


# THERE ARE NEW FEATURES IN RADIO!

*and Majestic has them ALL!*

- The SPRAY-SHIELD Valve
- The "MODULATED" Circuit
- TWIN POWER Detection

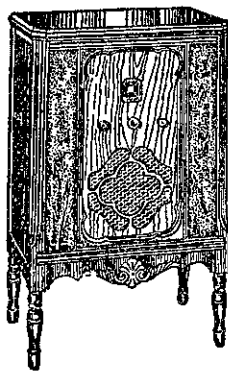


**MAJESTIC ELLSWOOD.**

A lowboy of early English design with recessed centre panel and matched butt walnut side panels. Handsome wood carving. Equipped with Majestic 5-valve superheterodyne chassis of monitor construction, using Spray-Shield and Pentode valves, "Modulated" circuit, tone control and Grand Opera Speaker.

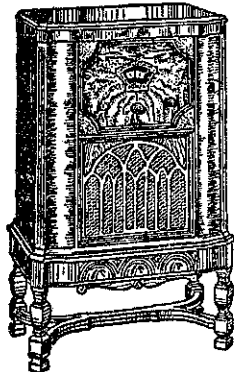
**MAJESTIC HAVENWOOD.**

Exceptionally selective and beautifully toned. Georgian design with recessed Gothic grill in matched walnut front panel. Majestic 5-valve superheterodyne chassis, providing "Modulated" circuit, tone control, Spray-Shield and Pentode valves and full dynamic speaker.



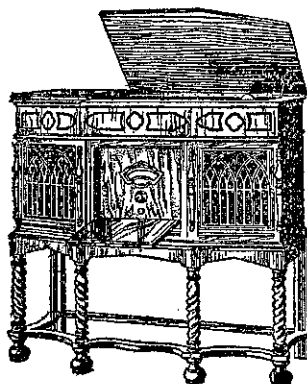
**MAJESTIC BRENTWOOD.**

Jacobean Lowboy with marvellously grained matched butt walnut centre panel, with lacewood overlays. Side panels of Serpentine curved walnut. Recessed Gothic grill. The Majestic superheterodyne chassis uses 9 valves, including Spray-Shield, Multi-Mu and Twin Pentode Output, Twin Power Detection, tone control, and Grand Opera Speaker.



**MAJESTIC ABBEYWOOD**

The finest radio-gramophone. True Charles II period, in butt walnut, exquisitely inlaid. The Majestic 10-valve superheterodyne chassis; automatic volume control, Spray-Shield and Multi-Mu Valves; twin power detection and twin Pentode output; tone control and twin Grand Opera Speakers. Electric pick-up and turntable; automatic record changer, handling 10 records.



Good news for Majestic dealers! Contrary to expectations, selling of radio receivers this year will not be confined only to the mention of Multi-Mu and Pentode as features. Majestic has them, of course, but Majestic engineers have developed yet newer AND MORE IMPORTANT ACHIEVEMENTS!

**SPRAY-SHIELD VALVES**, by which shielding metal is placed directly on the valve itself. No more metal cans... yet higher efficiency in the valve.

**TWIN POWER DETECTION**—The proper utilisation of two detectors for yet truer tone was found by Majestic engineers in a British set, in the Science Museum in England, known as the "Perfect Quality Receiver," and adapted to Majestic valves and methods.

**THE "MODULATED CIRCUIT,"** worked out in collaboration with Hazeltine Laboratories, by which the functions of two valves in the usual superheterodyne are now performed by one.

# Majestic

*"Mighty Monarch of the Air"*

## RADIO

Manufactured by  
**GRIGSBURY-GRUKOW COMPANY (Chicago)**  
World's Largest Manufacturers  
of Complete Radio Receivers

There is a Majestic Dealer in every town in New Zealand. Write to your nearest one for Free Illustrated Literature.

**SPEDDING LTD.**

BOX 462, AUCKLAND, NEW ZEALAND REPRESENTATIVES.

The new range comprises eight models—four only being depicted above.