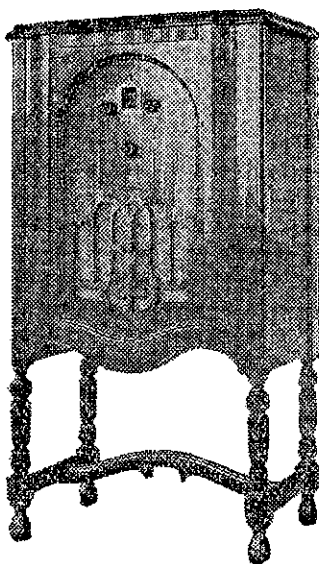


- 8.0 : Chimes: Overture—B.B.C. Wireless Symphony Orchestra, "Ruy Blas."
 8.9 : Contralto—Miss Beryl M. Smith, "If My Songs Were Only Winged."
 Quartet—The Clarion, "Sleepy Hollow Tune" (Kountz).
 8.15 : March—Salon Orchestra, under direction of Mr. Harold Baxter,
 "Gladiator's Farewell" (Blankenberg); Orchestral, "Hungarian
 Dances, Nos. 2 and 3" (Brahms).
 8.25 : Humour—Miss Rhona Speed, "With the Photographer" (Leacock).
 8.30 : Zither—Ernst Rommel, (a) "Episode" (Schiffel); (b) "Bells Ring-
 ing"; (c) "Spring in March" (Neal) (Poly. 21253).
 8.36 : Two Irish sketches—The Salon Orchestra, (a) "The Mountain Sprite";
 (b) "The Pattern" (O'Donnell).
 8.43 : Quartet—The Clarion, "A Maori Slumber Song" (Te Rangī Pāi).
 Tenor—Mr. Lambert Harvey, (a) "Child's Song" (Marshall); (b)
 "O Flower Divine" (Wood).
 8.52 : Waltz—The Salon Orchestra, "Weaner Mad'ln" (Zeihrer).
 9.0 : Evening weather forecast and announcements.
 9.2 : Piano—Mr. Cyril Towsey, (a) "Lotus Land"; (b) "Water Wagtail".
 9.8 : Duet—Messrs. Lambert Harvey and Duncan Black, "The Song of the
 Sword" (Gilbert).
 Soprano—Miss Lillian Woods, "The Enchanted Forest" (Phillips).
 9.14 : Suite—The Salon Orchestra, "Petite Suite" (Bizet).
 9.24 : Humour—Miss Rhona Speed, "At the Movies."
 9.30 : Mixed choir—Manchester Children's Choir, "Nymphs and Shepherds."
 9.34 : Orchestral—The Salon Orchestra, "Divertissement No. 1" (Flament);
 Entr'acte, "Invocation" (Flament); "Folly Dance" (Haines).
 9.41 : Duet—Misses Lillian Woods and Beryl Smith, "In Springtime."
 Bass—Mr. Duncan Black, "The King's Own" (Bonheur).
 Quartet—The Clarion, "Believe Me if all Those Endearing Young
 Charms" (Moore).
 9.55 : Selection—The Salon Orchestra, "1930" (Somers).
 10.3 : God save the King.
2YA, WELLINGTON (720 KILOCYCLES)—WEDNESDAY, OCTOBER 14.
 10.0 : Chimes. Selected gramophone recordings.
 11.37 : Lecturette—"Hollywood Affairs."
 12.0 : Lunch hour music.
 2.0 : Selected recordings.

This
 Handsome
 Superhetero-
 dyne Console
 Receiver gets
 the stations
 sharply separated—
 cuts out valve noises,
 cross talk and howling
 —gives pure, rich, re-
 sonant tone throughout
 the entire musical range.
 Add to all this, years of trouble-
 free service due to careful con-
 struction and conscientious testing
 and you have the best possible value
 obtainable in radio to-day.



GULBRANSEN RADIO

Made by the manufacturers of the famous Gulbransen Pianos—
 experts in tone. Cabinets made by piano craftsmen. No
 screws or nails used. Special sunfast, check-proof finish. Free
 demonstration from any Gulbransen Dealer.

N.Z. Distributors:

H. W. CLARKE, LTD.,
 182 WAKEFIELD ST., WELLINGTON.

Call and Hear This Wonderful Set At—

Lewis Eady
 LIMITED

In selecting an ad-
 dition to our line of
 Radios, we chose
 the Gulbransen for
 its wonderful tone.

AUCKLAND PROVINCIAL AGENTS,
 192 QUEEN ST., AUCKLAND.

We have never
 heard a radio
 with a tone to sur-
 pass the velvety
 tonal softness of
 the Gulbransen.

- 3.30 and 4.30: Sporting results.
 5.0 : Children's hour, conducted by Aunt Daisy.
 6.0 : Dinner music session (Polydor)—
 Paul Godwin's Dance Orchestra, "Medley of Popular Student Songs."
 Paul Godwin's Quintet with harp, "Extase—Reverie" (Ganne) (19923).
 Paul Godwin's Orchestra, "Poranek—Waltz Intermezzo" (Lindsay).
 Organ—Leo Stin, "Chanson Hindoue" (Rimsky-Korsakov) (23165).
 Polydor Orchestra, "Coucou—Imitative Waltz" (Jonasson) (23563).
 Paul Godwin's Orchestra, "In the Rosary" (Bialezki) (21005); "Tin
 Soldier's Parade" (Jessel) (19659).
 Berlin State Opera House Orchestra, "Introductions, Act 1, 2 and 3"
 (from "Carmen") (Bizet) (27190).
 Paul Godwin's Quintet with harp, (a) "Popular Song"; (b) "Tale,"
 Paul Godwin's Orchestra, "La Serenade Waltz" (Metra) (22872).
 Organ—Leo Stin, "Werther" (Massenet) (23165).
 Paul Godwin's Orchestra, "Fairy Doll Waltz" (Bayer) (21005).
 Paul Godwin's Dance Orchestra, "Siamese Parade" Fantasy (Lincke).
 Polydor Orchestra, "Valse Poudree" (Popy) (23563).
 7.0 : News, market reports and sports results.
 7.40 : Lecturette—Mr. F. M. Bateson, Sectional Secretary of New Zealand
 Astronomical Society, "Classifying the Stars—How They Are
 Measured and Counted."
 8.0 : Chimes. Vitaphone Orchestra.
 The Mirth Quakers.
 Weather report.
 International talk—Dr. Guy H. Scholefield, O.B.E.
 The Flying Song Squadron.
 The Old Whittler.
 Whispers.
 God save the King.

3YA, CHRISTCHURCH (980 KILOCYCLES)—WEDNESDAY, OCTOBER 14.

- 3.0 : Gramophone recital.
 4.25 : Sports results.
 5.0 : Children's hour, conducted by Uncle John.
 6.0 : Dinner music session (Columbia)—
 Percy Pitt's Orchestra, "Raymond" Overture (Thomas) (DOX84).
 Orchestre Symphonique de Paris, "L'Arlesienne Suite" Intermezzo.
 Musical Art Quartet, "Deep River" (arr. Conrad Held) (01625).
 Continental Novelty Orchestra, "Las Lagarteranas" (Foulkes).
 Band of H.M. Grenadier Guards, "Ivanhoe" Selection.
 Plaza Theatre Orchestra, "My Lady Dainty" (Hesse) (01438).
 B.B.C. Wireless Symphony Orchestra, "Il Trovatore" Selection (Verdi).
 Orchestre Symphonique de Paris, "L'Arlesienne Suite" Entr'acte: (1)
 La Ouisine de Castelet (Bizet) (01326).
 Herman Finck and His Orchestra, "Waldteufel Memories" (arr. Finck)
 Continental Novelty Orchestra, "Los Claveles de Sevilla" (Guerrero).
 J. H. Squire's Celeste Octet, "Serenade" (Titl) (9116).
 Plaza Theatre Orchestra, "The Busy Bee" (Bendix) (01438).
 7.0 : News session.
 7.15 : Dialogue—Mr. R. B. Tennant and L. W. McCaskill, "Forage Crops."
 7.30 : Addington stock market reports.
 7.45 : Talk—Te Ari Pitama, "One Hundred Years Ago."
 8.0 : Chimes. Programme by Canterbury Repertory Theatre Society, "Love
 Scenes From Four Centuries."
 Prelude—Victor Olof Salon Orchestra, "Merchant of Venice" (Rosse).
 8.4 : Play excerpts—Canterbury Repertory Theatre Society, "Scene From
 Romeo and Juliet" (16th Century) (Shakespeare).
 8.13 : Instrumental—Mrs. Roy Twynham and Mrs. H. E. Moysey (violins);
 Mrs. K. W. Robinson (viola); Mrs. John Guthrie (cello), "String
 Quartette" (2nd movement) (Haydn).
 8.23 : Scene—Repertory Society, "The Way of the World" (17th Century).
 8.29 : Selection—Victor Symphony Orchestra, "Kamennoi Ostrow."
 8.33 : Scene—Repertory Society, "Paolo and Francesca" (19th Century).
 8.39 : String Quartet, "Third Movement—Minuet" (Haydn).
 8.44 : Scene—Repertory Society, "Candida" (Shaw) (19th Century).
 8.50 : Meditation—Edith Lorand's Orchestra, "Thais" (Massenet).
 8.54 : Playlet—Repertory Society, "Caprice" (20th Century) (Silvara).
 9.3 : Weather forecast and station notices.
 9.5 : Talk—Mrs. T. C. Fenwick and P. S. Foster, "The British Empire
 Cancer Campaign."
 9.17 : Quintet—Strings and piano—Mesdames Roy Twynham and H. E.
 Moysey (violin); Mrs. K. W. Robinson (viola); Mrs. John Guthrie
 (cello); Mrs. R. Carey (piano), "First Movement of Quintette."
 9.32 : Dance music (Brunswick)—
 Foxtrot—Hal Kemp and His Orchestra, "Medley of Southern College
 Songs, Parts 1 and 2" (4958).
 Waltz—Carter's Orchestra, "Wednesday Night Waltz" (Williams).
 Lloyd Huntley and His Isle o' Blues Orchestra, "Lonely" (Grey)
 (4937). Ben Bernie and His Orchestra, "I Still Belong to You"
 (Eliscu) (4950). Lloyd Huntley and His Isle o' Blues Orchestra,
 "Gee, But I'd Like to Make You Happy" (Shay) (4937).
 9.53 : Vocal—Chester Gaylord, "What's the Use?" (Jones) (4928).
 9.56 : Foxtrots—Phil Spitalny's Music, "Maybe It's Love" (Mitchell) (4917).
 Tom Gerun and His Orchestra, "Maybe I'm in Love With a Dream"
 (Gerun) (6057). Tom Clines and His Music, "Why Have You
 Forgotten Waikiki?" (Kahn) (4882). Phil Spitalny's Music, "Be-
 yond the Blue Horizon" (Robin) (4917).
 10.18 : Vocal duet—Cotton and Morpheus, "Never Swat a Fly" (de Sylva).
 10.11 : Foxtrots—Six Jumping Jacks, "You're Simply Delish" (Freed) (4948).
 Jacques Renard and His Orchestra, "Readin', Ritin', Rhythm"
 (Hartman) (4940). Six Jumping Jacks, "It's a Great Life"