

**SHORT-WAVE** station on approximately 48 m. First picked up at 7.35 p.m. Monday, September 28, strength R6. At 12 midnight an orchestra was playing a march, followed by a waltz. A number of vocal duets, male and female, between 12 and 12.25 a.m., orchestral accompaniment. Between every two items a foreign male announcer spoke for a few minutes. At 12.35 an orchestral march, followed by an announcement, and the station disappearing at 12.30 a.m. on the 29th. Strength had increased to R8 at time of signing off. A short-wave station on approximately 31.3 m. every evening, at times varying between 8.45 and 11.30 p.m. Usually 9.30 to 10 p.m., there were musical items, mostly orchestral. At other times, a foreign male voice speaking as though on one side of a telephone service conversation. Strength R8.—"Rad" (Te Awamutu).

Sunday, September 27, 8.30 p.m.; Station on 1315 kc. (228 m.) just above 2NC. 8.30 p.m., signed on 8.40. Song, "Down by the River" 8.43; another record; 8.45, man sang "Hello, Hello, Everybody. This is station —". Signed off at 8.50 p.m. I understood him to say the station was coming on in ten minutes' time. Q.S.B., long and irregular.—"Pal" (Gore).

## DX Topics

### JOHN on Morning Schedule.

**THIS** station commences broadcasting at 6.45 a.m., and closes down at 9.40 p.m. I received a card from 4BC this morning after waiting about four months. They must have a very big bundle of reports to answer—DX22A (Kakahi).

### Identifying Europeans.

**HAS** any dixer evolved a method of identifying European stations, for they all speak in a foreign language? One I took to be the London Regional, on 442 k.c. (356 m.), turned out to be a station speaking in a foreign language. I can get stations on the following frequencies:—842, 850, 869, 710, 755, 761, 779, 610, 670, 680, 595, 900, 932, 1004, 1076, 1085, 1150, 1180, 1220, 1330.—DX260C.

### Guessers.

**I HAVE** been an interested reader of the DX column for some time although I have never before corresponded. I have often felt like sending a few lines to some of the guessers. During the time I have had my set I have logged 117 stations, not including suppositions or Americans caught on the Columbia or any other chain. It is not my intention to enter for the competition because of several reasons. I am of the opinion that broadcast programmes along with printed programmes of coming broadcasts running through the American chains are being abused a great deal. In the second place, northern dixer have a decided advantage in locality, no twilight to contend with, and no Southern Alps, and, further, I am content, with the little spare time I have to paddle along quietly by myself. I am interested in dxiing, but the following sentence always produces a smile: "Station heard on 1000 k.c. Who is he?"—900C (Dunedin).

[We are eliminating from our columns very vague details for identification want-

ed We maintain that before identification can possibly be established, the listener must have heard several items. Consequently many requests for identification do not find their way to our columns. Furthermore, we endeavour to withhold from publication all attempts at identification when they do not, in our opinion, represent that the identifying member has, at some time or other, heard that particular station if not that particular broadcast. With regard to your first point, while there is a possibility of this, there is also a chance of our detecting the practice. We carefully check up on all matter submitted, both for the competition and the DX columns. If at any time we found a case such as you cite we are afraid the DX competition would be short-lived. We make an appeal to dixer to play the game. There cannot be a great deal of honour and glory in displaying a cup which was obtained by unfair methods. After all, the possibility of logging stations in this manner, is really very small. We do not altogether agree that northern listeners have the best locality, as excellent logs have been received from south. Northern listeners have to contend with more static during the summer months than do the southern listeners.—Ed.]

### Mexican Stations.

**THE** following information has been taken from recent verifications:—XEW, Mexico: We broadcast from 8 a.m. to 11 p.m. Mexican time (2 a.m. to 5 p.m. N.Z.T.). Our wavelength is 329 m. (910 k.c.), shortwave 50 m. XEO, Mexico: We are on the air every night from 7-10 p.m. Mexican time (12.30 p.m. to 3.30 p.m.). We operate on 940 k.c. (320 m.). KOY, Phoenix, Arizona, has installed a new s.g. transmitter, and would like to hear from New Zealand listeners (1390 k.c., 216 m.). I have heard CJOR lately; on August 29 he was relaying a boxing match. I have just received daylight verification from 2UE. He has mentioned the time without the date. Is this O.K.? (Yes).—R. A. Sutherland (Mamakau).

### 3KZ Off Their Wavelength.

**ON** September 25 3KZ was off his wavelength. Has he changed. I picked him on 198 m. (1510 k.c.). Have any dixer received a verification from WFAA? I wrote them three months ago and have not received a reply. On Sept. 24 I heard a stranger talking in a foreign tongue on 198 m. (1510 k.c.). I could not catch the call-sign.—DX64A (Mokau).

### DX Competition Rules.

**SUPPOSING** a person in Hawke's Bay shifts to another district, how would the verifications already received count for the new district? I have received information that there is no station 3TFO. The only conclusion I can come to was that it was 3EF.—"Hydro" Napier. [Verifications once received can count for any district, at any time. Once having logged a station it is in DX Competition for keeps. You will notice that we have amended the DX rules to make this possible. Previously a station that changed its frequency would have to be relogged.—Ed.]

### Reports from 7DR.

**I HAVE** recently received a verification from VK7DR. An excerpt reads: Your report was a great surprise, as we

were very pleased to receive it. We have been on the air since March, 1930, and only had dreams of being heard in New Zealand. Yours is the first report from New Zealand, and the items are correct. We hope to hear from you again." This station is owned by the Devonport Radio Club. They use 18 watts input to a UX250. The aerial is 132 feet long and 70 feet high. He operates on 241m. (1240 k.c.). I have received a second card from 3RU, which

## American Stations

**HERE** is a list of the relative strengths of Americans received here for the week ending September 26, 1931, from 6 to 7.30 p.m.—A. J. Moody (Tokomaru):—

KFI, Los Angeles	9
KGO, Oakland	8
KPO, San Francisco	8
KHJ, Los Angeles	8
KOA, Denver	8
KTM, Los Angeles	7
KGMB, Honolulu	7
KMTR, Hollywood	7
KHQ, Spokane	6
KNX, Hollywood	6
KSTP, St. Paul	6
WBBM, Chicago	6
WENR, Chicago	5
KFWB, Hollywood	4

Some recent loggings are:—KV00, Tulsa; 3EF, KFBB, Great Falls; JOKK, JONK, JOJK, 3SH. Recent verifications are JOAK and KRLD, 2WL.

says that he is now operating on a wavelength 222m. (1350 k.c.).—J.P.O. (P.N.). [Thanks for the "Ekko" stamp.]

### Are These Europeans?

**I HAVE** early morning stations on the following frequencies: 1225 k.c., 1120 k.c., 1085, 1340, 1210, 780, 850, 1000. I think the one on 1085 k.c., near KMOX, is Heisberg, Germany. This station relays Konigsberg.—DX8HB.

[Your other correspondence has been handed to the Ed. of "Log." The letter will do for a verification.—Ed.]

### Calls of Europeans.

**DX36A** (Otorohanga).—Most stations in France, Germany, Poland, Switzerland, etc., have no calls, but use the name of the town in which they are situated as their call. A few mornings ago I heard 20 Europeans scattered all over the dial—Bratislava (1076 k.c.), Toulouse (780 k.c.), Mulilacker 830 k.c.), and Bucharest (760 k.c.) being the best. On September 29 the London National Station, on 1150 k.c. was heard at fair strength, giving a talk on what I took to be "finance." On the same morning, at 5.30 a.m., Bratislava was R8 on the loud-

speaker. The American stations have been coming in at good strength lately, but static has been fairly severe. My latest are: KOIL, Council Bluffs; KVI, Tacoma; CJOR, Sea Island, B.C.; and three Australian amateurs—3GK, 3JZ, and 2EK. In a recent verification from KDB, Santa Barbara, they said that my report was the best they had received from New Zealand. Other verifications recently received are KGW, Portland, Oregon; WSUL, Iowa City, and JPAK, Formosa.—N. Jenkins (Masterton). [Your list of Europeans will be used for the "Log."—Ed.]

### New Australians.

**THE** latest Australian my latest loggings include: 4TO, Townsville, Queensland, owned and operated by A.W.A., Ltd. This station was testing on September 30 and October 1 from 12.0 a.m. until 1.0 a.m. (N.Z.S.T.), on a frequency of 1238 k.c. (238m.). An announcement was heard stating that 4TO will be officially opened by the Mayor of Townsville on Monday, October 5, 1931. On September 21 I also logged VK3RG, Castlemaine, 1220 k.c. (245m.); VK4LW, Rosalea, Brisbane, 1500 k.c. (200m.). The American KSL, Salt Lake City, Utah, was logged also on the same night. The latest verification cards received include KFBI, Milford, Kansas, 1050 k.c. (235.5). An interesting letter was also received with EKKO stamp from KFBI, 4BC, Brisbane, 1145 k.c. (262m.) acknowledged my report sent over four months ago. My best verification is that of 4GR, Toowoomba, "The Queen City of the Downs." This Australian is on the air regularly from 10.30 a.m. to 11.30 p.m. (N.Z.S.T.) daily, and operates on 1000 k.c. (300m.). Address is, Gold Radio Service, 380 Ruthven Street, Toowoomba. 2XL's card has been received from Broken Hill, "The Silver City." Frequency 1365 k.c. (220m.). Power 50 watts.—Searcher (Manala).

### Midnight Organ Transmision from KGO.

**KGO**, Oakland, California, on 790 kc. (378 m.) announced that they were putting on a series of midnight test organ recitals, and if they received enough letters of appreciation they would make it a permanent transmission.—DX9W.

### Unanswered Verification.

**I HAVE** just received a card from 4BC, Brisbane, after four months. The only ones on my black list are 3WR, Wangaratta, and 2GB, Sydney, to whom I wrote about four months ago. KFI has been R9 on the speaker from 6.30 p.m. every night lately. Latest American loggings are:—KHOW, Oakland; KGE, Portland; KMTR, Los Angeles; and KHQ, Spokane. Are any DX-ers wearing their badges in the street? I was recently in Blenheim and did not see one. I have not seen one in Nelson yet.—DX1NW (Thorpe).

### C.I.O.R. Well Received.

**I RECEIVED** this station on the 18th at the same time as Mr. Ellis. I near—(Concluded on page 28.)

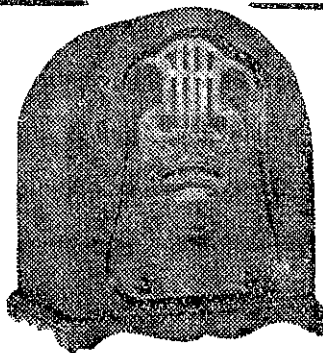
# RADIO GOODS What to Buy and Where

**BURGESS RADIO BATTERIES, All Radio Dealers.**

**LOFTIN-WHITE AMPLIFIERS** Stewart Hardware Ltd., Courtenay Place, Wellington.

**MULLARD VALVES** . . . . . All Radio Dealers.

**RADIOLA RECEIVERS and Expert Radiola Service** . . . . . Farmers' Trading Co., Ltd., Hobson Street, Auckland.



## LYRATONE MODEL 63

### SUPERHETERODYNE

8

Free Airship Balloons for the kiddies.

Write your nearest dealers and obtain Balloon FREE!

DEALERS ALL OVER N.Z.

Wholesale: **CRAWFORD & FINLAYSON LTD.**

BOX 675, WELLINGTON.

Retail: **F. J. W. FEAR & CO., LTD.**

WILLIS STREET, WELLINGTON. Phone 41-446