

**You'll find this
screen-grid**

**valve is
better**

The
**OSRAM
MY. 224**

... MADE IN ENGLAND



PERFECT radio detection is a matter of perfect valves. This new 2.5 volt Osram is, like the entire 2.5 Osram series, definitely non-microphonic. Shocks or vibration do not affect it. It is the **ONLY** screen-grid valve that is perfectly noiseless in operation.

You can test Osram '2.5' superiority at your Radio Dealer's. Ask to switch on any set, tune out all stations and tap the 224 or 227 detector. If it is microphonic the speaker will emit a pinging noise, indicative of imperfect reception. If the microphonic valves are replaced by Osram 2.5s, tapping will result in silence.

Osram
2.5
Valves

Ask your dealer also to show you the full range of Osram 2.5 volt valves—
MY.224, MY.227,
MX.245 & MX.280

**MADE IN
ENGLAND**

Advertisement of the
BRITISH GENERAL ELECTRIC CO. LTD.

37 Taranaki Street, Wellington.

Brunswick Bldgs., 49 High Street, Auckland.

Hannaford Chambers, 145 Worcester Street, Christchurch.

A Perfect Miniature

*Eclipsing Every Standard of Radio
Performance*

The SILVER MARSHALL

8-VALVE SUPERHETERODYNE

All the fine tone and volume that you expect in a full-size cabinet model is available in the Silver-Marshall "Miniature" Receivers.

An 8-Valve Midget type Super-heterodyne chassis is housed in this "Compact" Model—complete with every feature you want to give unparalleled performance.

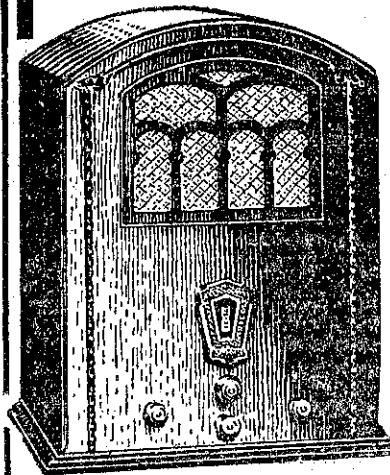
A thrill awaits you when you hear the 1931 Silver-Marshall.

N.Z. Distributors:

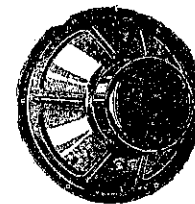
FACTORY IMPORTS LTD.
96 TORY ST., WELLINGTON.

N.Z. Distributors for S.-M. Short-Wave Sets, Chassis and Parts—

THOS. BALLINGER & CO., LTD.,
VICTORIA ST., WELLINGTON.



SILVER-MARSHALL
"COMPACT"



Standard Permadyne

A New Speaker that is a Permadyne. Built on the latest permanent magnet—moving-coil dynamic principle, this Loud Speaker is a production of the highest quality.

It is the equivalent of a dynamic and is of the moving-coil type, but has the definite advantage that no field excitation is required.

It has a 10½in cone, and can accommodate tremendous volume with absolute faithfulness of tone.

Standard
Telephones and Cables (Asia) Limited

Head Office: G.P.O. Box 638, Wellington.
Auckland: P.O. Box 1897.