

about 1400. As 2YA were on their news session you heard no call. "Treasure" (Auckland): It is not uncommon to get a foreign lecture from Australian stations, and it is quite likely yours was one from 3LO.—B.W. (Stratford).

W.E.W. (Te Mata): The station heterodyning with 1YA was 4RK, Rockhampton, a new Australian "B" class station. 1YA's frequency has now been shifted to approx. 870 kc. (345 metres), in an endeavour to avoid this. Incidentally, 4RK usually relays 4QG, Brisbane, thus explaining why you heard the latter's programmes on two frequencies.

R foreign station on 910 kc. (330 m.), reported by several DX-ers lately. On August 1 at 4.53 p.m. an announcement was given in English to the effect that the station was situated on the west coast of Mexico. I am sure the station is using very high power, for there are times when I have had him stronger than 1YA.—"DX31HB" (Gisborne).

"A READER" (Papakura), "Trapper" (Rangataua), and "Digger" (Hamilton): KZRM Manila, on 620 kc. (484 m.). "DX23A" (Cambridge): WLS, Chicago, signing off. WENR then came on with dance music. Both stations operate on 870 kc. (345 m.).—"DX1HB" (Hawke's Bay).

J.R.B. (Whangamomona): KSL Salt Lake City, Utah (265 m.), 1130 kc.—"Bob" (Wellington).

W.L.B. (Wanganui): Station heard between 6.15 and 7 p.m. on July 26 is KSTP, St. Paul, Minnesota. Frequency, 1460 kc. (205 m.). I heard the items mentioned and have sent for a card.—"Knight of the Ether" (Carterton).

"DX7W" (Marton): I cannot explain why, but the music you heard was 2YA's dinner session. I heard it exactly where you state, half-way between KGO and KTM. It was undoubtedly 2YA, as I heard the station again during the news session, and there is no mistaking the announcer's voice.—M.B.S. (P.N.).

[Possibly a relay by some "B" class station.—Ed.]

DX Topics

Particulars of 2ZH.

FOLLOWING are details of schedule, power, etc., of our station, 2ZH, Napier, the transmitter of which has now been completed. Tests are being carried on almost every morning, and from 10.0 a.m. to 1.0 p.m., and sometimes at night after 10.30 p.m. The opening ceremony took place on August 5. Power, 100 watts; frequency, 1260kc (233 metres).

Schedule.—Monday to Saturday, inclusive, 10.0 a.m. to 1.0 p.m.; in addition, Wednesdays, 6.30 p.m. to 10.30 p.m., and Sundays 2.0 p.m. to 4.30 p.m., and 7.0 p.m. to 10.0 p.m.

The transmitter is a complete new one, built in our own workshops, the one we had in operation previous to the earthquake having been burnt during the fire.—O. B. Hansen and Co., Ltd. (Napier).

American Reception.

AUGUST 5 was one of the best nights I have had for American reception. KGMB, KOL, KDYL and KGER after 6.30 surpassed even the powerful KFI. This may bear out the theory of "Kairu-ur!" that reception is better after a cyclonic storm. Did any DX-er hear WLW giving the New Zealand programme relayed by 1YA and 3YA from WX8AL? As most people know, the latter is the short-wave station of WLW.—"DX46A" (Cambridge).

Did Anyone Hear This?

I RECENTLY received a letter from the Division Engineer, N.B.C., San

Francisco, re a report I had sent him on reception (on 1040 k.c.) of the welcome to Prince and Princess Takamatsu of Japan, relayed from Fairmont Hotel San Francisco, on May 28. He said that this programme was broadcast by the N.B.C. at the time and date mentioned, but that neither of the two stations on 1040 k.c. (238 m.), KRLD and KTHS, were connected with the N.B.C., nor were relaying a programme. He said he had also received a letter on the programme from a listener in Palmerston North. I remember R.J.R. (P.N.) mentioned the broadcast in the "Radio Record," and said it was broadcast by KRLD. I would like to know if R.J.R. heard the call, because I heard no call at the beginning or

Reception Table

Following is a table showing the relative strengths of Australian stations (R1—10) as received by "Joe" (Greymouth)—

2NC	9
2FC	8
2BL	8
3LO	8
3AR	8
4QG	8
3DB	8
4BC	8
2AY	8
2MO	7
3KZ	7
2GB	7
2UE	6
7ZL	5
5CL	4
6WF	3

when the station closed down. Mr. Saxton, of the N.B.C., said that he had no idea of what station was relaying their programme and would like to know. Can R.J.R. or any other DX-er give any information?—"DX42W" (Oamaru).

DX-er's Accomplishment Doubted.

SEVERAL DX-ers doubt the achievement of NZ17W (P.N.), in logging Europe on a one-valve set. Might I suggest to NZ17W that he forward full details of his set to the "R.R." so that the "unbelievers" and others may build it and test for themselves the capabilities of his receiver.—"Knight of the Ether" (Carterton).

[Subject to our approval, we would be quite agreeable to publish details of DX17W's set.—Ed.]

2ZL's Frequency Changed?

STATION 2ZL on 1330 k.c. (225 m.) on August 4 came in at dial reading 12, and was heterodyning with another station. Later in the evening, however, he came in at 10, with no interference. I recently logged WGES, Chicago, on 1360 k.c. (220 m.).—H.L. (Havelock North).

Are DX-ers Wearing Their Badges?

MY reception of 1YA's relay of the wrestling on Monday night last was almost completely spoiled by 4RK. I noticed last night that 1YA has moved up close to WENR. The change should be a big improvement, as he can easily be separated from 2BL. Reception of 4RK is far better than that from 4QG, and I believe the former station will be a decided acquisition to listeners. I have just returned from a tour of the North Island, taking in Wellington, Napier, Hastings, Hamilton and Auckland, and I failed to observe a member of the club wearing the badge, although I eagerly looked for one. DX-ers, re-

ARE YOU CERTAIN That Set you have your eye on IS the Latest???

READ THIS:

MODEL 63 LYRATONE SPECIAL

8-Valve Super Heterodyne,
3 Variable Multi-MU Valves,
1 Pentode,
Pointer Type Vernier Control,
Full Vision Dial, Calibrated Kilocycles and Metres.

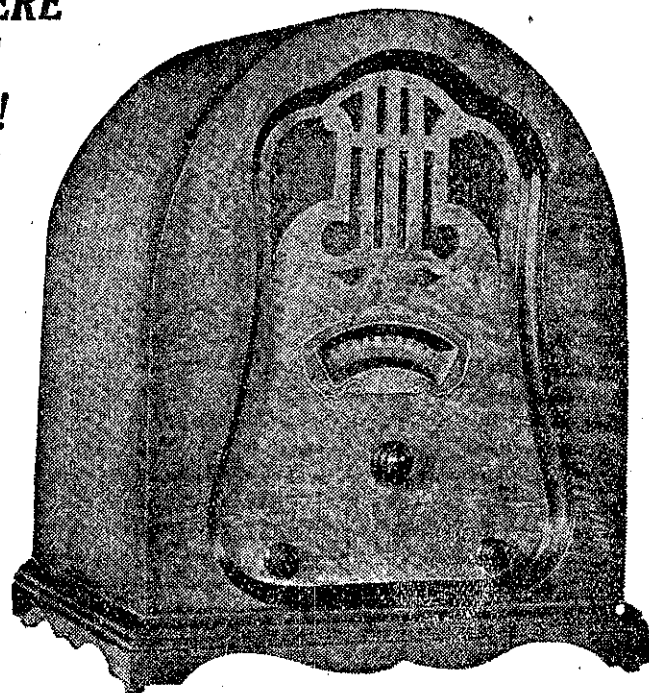
For TONE PURITY,
VOLUME,
EXTREME SELECTIVITY,
EXTRAORDINARY RANGE,
(DX-ers note this point)
KEN-RAD VALVES.

Matched Walnut Cabinet,
Latest Refinements in Dynamic Speaker,
Phono Jacks—1932 at your door to-day.
Fully Guaranteed 230 Volts, 50 Cycles A.C.

THE NEATEST, BONNIEST, SUPER-HET. MIDGET THE WORLD HAS
YET PRODUCED, AND ITS

FIRST FEATURE IS PERFORMANCE

HERE
IT
IS!



N.Z. Retail Price £25

Wholesale only—

CRAWFORD & FINLAYSON
LIMITED

BOX 675, WELLINGTON.

(Regular shipments commence to arrive August 12th)

LYRATONE SHORT-WAVE A.C. CONVERTERS
for all Models arriving.