

**MADE LIKE
A WATCH . . .**



MADE IN ENGLAND

that's why!

What precision! It's evident to anyone who examines one of the new Osram 2.5 Valves that their construction is out of the ordinary. What reception when you put them in your set. Not the slightest trace of microphonic noise — only pure, clear tones from the highest to the lowest registers.

The complete range of Osram Valves, including the following 2.5 Volt Series, is available at your radio dealers—MY 224, MY 227, MX 245, MX 280.

Osram
2.5
ac
Valves

Made in England

MY 227 is a recently developed Detector or first-stage Audio Valve, with indirectly heated Cathode for A.C. Sets. Non-microphonic.

Advertisement of the
BRITISH GENERAL ELECTRIC CO. LTD.

37 Taranaki Street, Wellington.

Brunswick Bldgs., 49 High Street, Auckland.

Hannaford Chambers, 145 Worcester Street, Christchurch.

A Perfect Miniature

Eclipsing Every Standard of Radio Performance

The SILVER MARSHALL

8-VALVE SUPERHETERODYNE

All the fine tone and volume that you expect in a full-size cabinet model is available in the Silver-Marshall "Miniature" Receivers.

An 8-Valve Midget type Super-heterodyne chassis is housed in this "Compact" Model — complete with every feature you want to give unparalleled performance.

A thrill awaits you when you hear the 1931 Silver-Marshall.

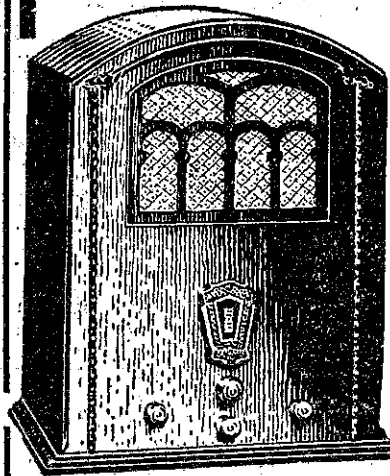
N.Z. Distributors:

FACTORY IMPORTS LTD.

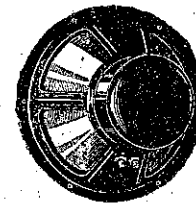
96 TORY ST., WELLINGTON.

N.Z. Distributors for S.-M. Short-Wave Sets, Chassis and Parts—

THOS. BALLINGER & CO., LTD.
VICTORIA ST., WELLINGTON.



SILVER-MARSHALL
"COMPACT"



Standard Permadyne

A New Speaker that is a Permadyne. Built on the latest permanent magnet—moving-coil dynamic principle, this Loud Speaker is a production of the highest quality.

It is the equivalent of a dynamic and is of the moving-coil type, but has the definite advantage that no field excitation is required.

It has a 10½ in. cone, and can accommodate tremendous volume with absolute faithfulness of tone.

Standard
Telephones and Cables (Asia) Limited

Head Office: G.P.O. Box 638, Wellington.

Auckland: P.O. Box 1897.