

# This power valve is noiseless!



*It's*  
**MADE IN ENGLAND**  
*...and  
made better*

**THIS** is the Osram MX.245 power valve. Within its characteristic limits it gives unparalleled results in all output circuits—extraordinarily distortionless amplification, ample current capacity, and complete freedom from all microphonic noises. It is the *only* 245-valve in the 2.5 volt range that is noiseless under all conditions of operation. You can test Osram '2.5' superiority at your Radio Dealers. Ask to switch on any set, tune out all stations and tap the 224 or 227 detector. If it is microphonic the speaker will emit a pinging noise, indicative of imperfect reception. If the microphonic valves are replaced by Osram 2.5s, tapping will result in silence.

**Osram**  
2.5  
*ac* **Valves**

Ask your dealer also to show you the full range of Osram 2.5 volt valves—  
MY.224, MY.227,  
MX.245 & MX.280

**MADE IN  
ENGLAND**

Advertisement of the  
**BRITISH GENERAL ELECTRIC CO. LTD.**

37 Taranaki Street, Wellington.

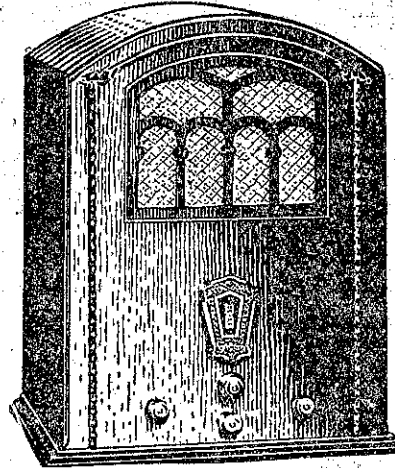
Brunswick Bldgs., 49 High Street, Auckland.

Hannaford Chambers, 145 Worcester Street, Christchurch.

*No other receiver at any price offers  
so much as the*

## **SILVER MARSHALL**

**8-VALVE SUPER-  
HETERODYNE**



**SILVER-MARSHALL "COMPACT"**

The Silver-Marshall "Compact" Receiver houses an 8-valve midge-type Superheterodyne chassis, complete with every feature you want to give unparalleled performance. A perfect miniature with all the tone and volume of a full-size cabinet model... eclipsing all former standards of Radio performance.

**A Thrill Awaits You When  
You Hear the 1931 Silver-  
Marshall.**

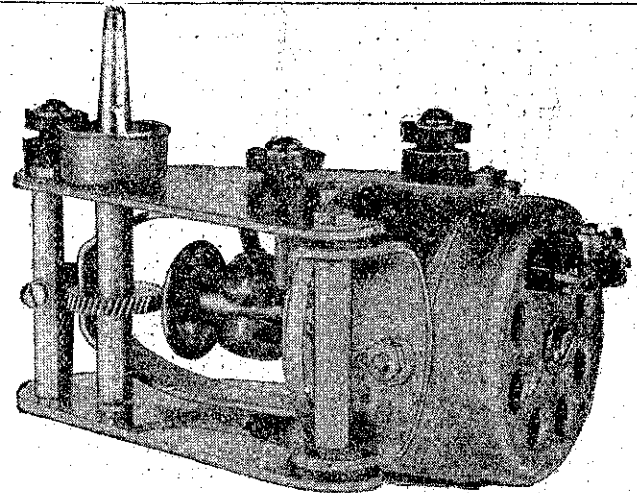
N.Z. Distributors:

**FACTORY IMPORTS LTD.,**

96 TORY STREET, WELLINGTON.

N.Z. Distributors for S.-M. Short-Wave Sets, Chassis and Parts—  
**THOS. BALLINGER & CO., LTD., VICTORIA STREET, WELLINGTON.**

Write for Details of Available Dealer Territory.



## **"DUAL" Gramophone Motors**

These are constructed on a new principle in which the armature windings are disposed on a very light drum, and, in effect, the windings only rotate. This avoids the usual procedure in which the heavy iron core carrying the windings also rotates.

Thus, "Dual" gramophone motors are particularly silent. Moreover, heavy starting currents are avoided because of the very low inertia of the moving parts and consequent rapid acceleration.

Complete with 12in. turntable, automatic switch and brake—and the price is right.

**Standard**  
*Telephones and Cables (Asia) Limited*

Head Office: G.P.O. Box 638, Wellington.

Auckland: P.O. Box 1897.