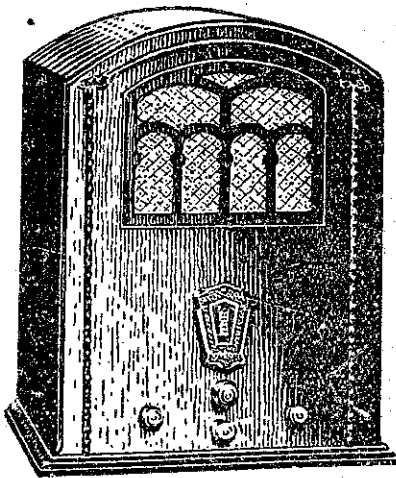


Before You Buy - - Be Sure To Hear The SILVER MARSHALL

The S.M. Superheterodyne Combination

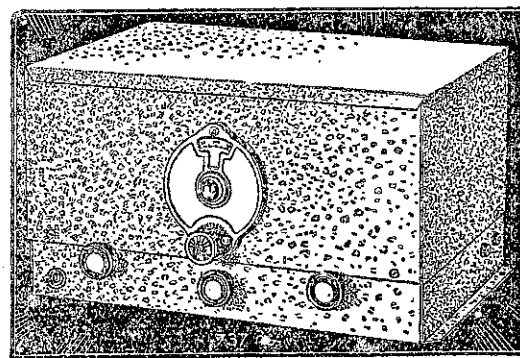
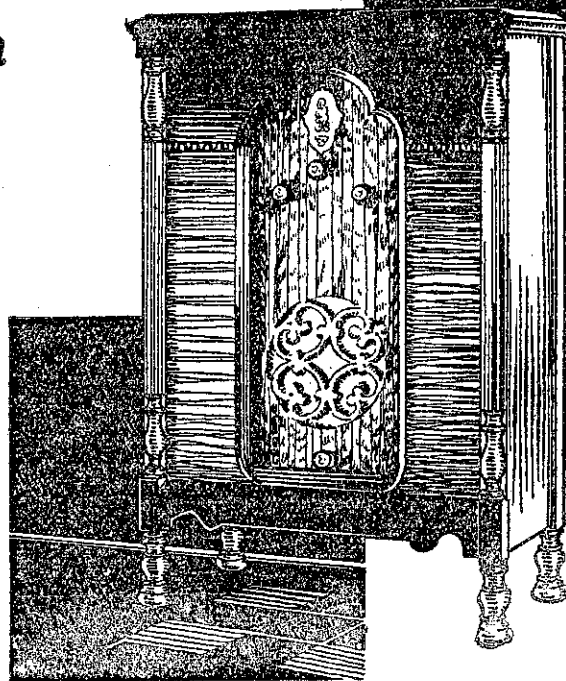
is an interpretation of Beauty and Quality of radio construction. Both Phonograph and Radio, but with greater but more versatile performance! Tone that will amaze you, greater selectivity that will delight you—reproduction of broadcast and recorded music that you have never thought possible

A SUPERHETERODYNE



Smaller in Size—in Cost—but BIGGER in PERFORMANCE

In building the 1931 Superheterodyne "Cadet," the Silver-Marshall engineers cut cost and size, but not performance. This amazing model has an 8-VALVE SUPERHETERODYNE chassis, with tone control, long distance switch, three screen-grid valves, electro-dynamic speaker, etc.—every feature you want to get the maximum enjoyment from the air.



SILVER-MARSHALL RADIO SETS and RADIO PARTS

Short-wave Sets, Chassis
and Parts

THOS. BALLINGER &
CO., LTD.,

53 VICTORIA STREET,
WELLINGTON.

N.Z.
Distributors:

Complete S.M. Receivers
and Cabinets

FACTORY IMPORTS,
LTD.,

95 TORY STREET,
WELLINGTON.

How would you like to receive broadcast programmes from stations 5000 to 10,000 miles away?

Yes! This performance is possible with the

SILVER MARSHALL "BEAR CAT"

Additional features of this set are:—

All-Electric Operation.

Single Dial Tuning.

Covers 16.6 to 200 metres, with additional coils available to cover the New Zealand broadcast bands, thus making an

All Wave Receiver

TO RADIO DEALERS.—Write to either of the above for particulars of available dealer territory.