

Maori Programme**2YA, Thursday**

SINCE the Wellington Radio Exhibition programmes went to press, we received the following additions for Thursday, June 12:—

8 p.m.: Maori Party.

1.—Opening Scene—

(a) The Welcome:

- (1) The call of welcome.
- (2) The response.
- (3) The haka of welcome.
- (4) The haka in reply.
- (5) The speech of welcome.
- (6) The speech in reply.
- (7) The chant.
- (8) The "Hongi" or salutation.

2. Part Song:

(a) Toki wairua.

(b) Awhi maiChoir

3. Waka, or Canoe Poi

The Company

4. Solo—Selected

Miss Eileen Grennell

5. Maoris at Home:

(a) Choruses

(b) Tittorea .. The Company

6. Violin Solo—Selected..J. Rikihana

7. Long Poi Poi Girls

8. Solo—SelectedHenare Tahiwi

—2nd Part—

9. Double Poi The Poi Girls

10. Violin Solo—Selected—J. Rikihana

11. "Puiru Taitama" ...The Company

Elaborate Radio Installation

THE most comprehensive wireless equipment afloat is carried by the new Canadian Pacific liner Empress of Canada, which made its first Atlantic crossing last May.

Programmes from both sides of the Atlantic were picked up, amplified, and reproduced through a loudspeaker system extending throughout the ship. The cabin in which the receiving equipment is located resembles the control room of a modern broadcasting station, with the main amplifier, short-wave programme reception set, switchboards, motor-generator, double-turntable electric gramophone, and microphone for "local announcements."

In addition to the daily broadcast of world programmes received on the short-wave set, the loudspeakers will also be used to broadcast concerts and dance music played by the various orchestras. Microphone points have been installed in the ballroom, main lounge, and dining saloon, and through the amplifier system music from those rooms can be made available all over the ship.

12. Solo—Selected

Miss Eileen Grennell

13. Double Poi The Poi Girls

14. Part Song The Choir

15. Action Song The Poi Girls

16. Solo—Selected .. Henare Tahiwi

17. Haka The Company

Australian Programmes**Times Corrected for N.Z.****Thursday, June 11.**

STATION 2FC—9.40 p.m., 10.23 p.m. and 10.52 p.m.: The Sydney Madrigal Society. 9.47 p.m. and 11 p.m.: May Willis, pianiste. 10.16 p.m. and 11.29 p.m.: Athos Martelli, 'cellist.

2BL—9.30 p.m.: "Magnolia of the Mississippi," a drama in four scenes. 11.8 p.m. and 11.30 p.m.: Des Tooley and Beryl Newell in popular songs at the piano. 11.15 p.m.: Clive Amadio, saxophonist.

Friday, June 12.

STATION 2FC—9.30 p.m.: A concert hour, arranged by G. Vern Barnett, organist. 10.45 p.m.: Relay from 3LO, Melbourne, of a military band concert.

2BL—9.37 p.m. and 11.25 p.m.: "The Melody Men." 9.55 p.m. and 10.53 p.m.: Frank Ryan, comedian. 10.2 p.m. and 10.45 p.m.: Queenie and David Kaili, Hawaiian entertainers. 10.18 p.m. and 11.37 p.m.: Mae and Max, entertainers. 10.26 p.m.: Clive Amadio, saxophonist.

3LO—9.30 p.m.: "Ancient Scottish Ballads." 10 p.m.: Organ recital. 10.30 p.m.: "The Paraphrasing Five." 9.45 p.m.: Military band concert.

3AR—9.45 p.m.: Community singing from the Town Hall, Ballarat.

Saturday, June 13.

STATION 2FC—9.38 p.m. and 10.25 p.m.: Leonore Gotsch, soprano. 9.45 p.m. and 10.56 p.m.: Henri Penn, pianist. 10.0 p.m. and 11.20 p.m.: Clifford Lathlean, basso.

2BL—9.30 p.m., 9.54 p.m. and 11.14 p.m.: The Metropolitan Band. 9.35 p.m. and 11.21 p.m.: R. A. Bartleman, baritone. 10 p.m.: Relay of boxing contest at Sydney Stadium. 11.7 p.m. and 11.38 p.m.: John Stuart, comedian.

3LO—9.30 p.m.: Concert by the Melbourne Symphony Orchestra.

FOR SALE OR EXCHANGE

The rate for small advertisements under this heading is 1/6 cash for 20 words, and twopence for every other word thereafter.

SERVICEMEN. Readrite model 245 Set Analyser and Tube Tester. Tests Screen-Grid Valves. Never been used. £6 cash. Particulars "Radio," Box 50, Cambridge.

GRACEFUL figure obtained with Youth-O-Form Capsules. Superfluous flesh soon disappears. Simple, safe, sure. 6/6 posted. A. C. Timms, Chemist, Pahiatua.

SLENDER Hips can be secured without dieting or strenuous exercise by taking Youth-O-Form Capsules. 6/6 posted. A. C. Timms, Chemist, Pahiatua.

VENUS' Figure can be your goal by taking Youth-O-Form. 20lb. reduction 6 weeks. 6/6 posted. A. C. Timms, Chemist, Pahiatua.

Have YOU Heard ROME Direct on Your Receiver?**---Not Unless it is an Ultimate**

Not only Rome—but England, Russia, Siberia, Holland, America, Germany, and all the leading Short-Wave Stations of the world are within your easy reach with the amazing new "Ultimate."

"ULTIMATE"**All-Wave World Receiver**

The set that gives astounding short-wave reception from every part of the world—in addition to receiving all the usual Broadcast Stations. Why buy a yesterday's radio when you can own the "Ultimate," which is a year ahead of every other receiver. With its outstanding performance, tremendous volume, and perfect clarity and purity of tone, it gives you the real fascination and enjoyment of radio entertainment.

There is an Ultimate Distributor in every part of New Zealand. Arrange with your local agent for a demonstration TO-DAY, or write for Free Illustrated Literature.

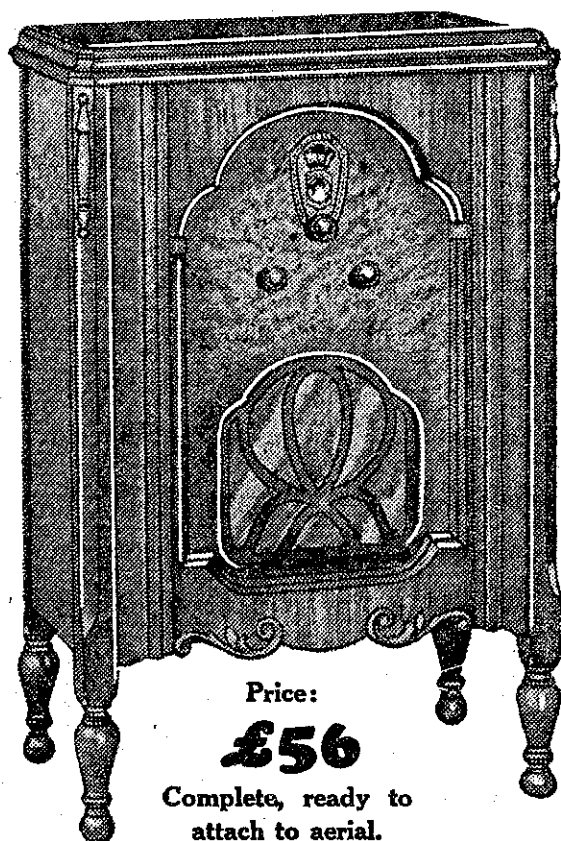
Distributors for Wellington:**Messrs. HAMILTON NIMMO & SONS LTD.****CORNER OF BOND AND WILLIS STREETS, WELLINGTON.**

Branches at Palmerston North and New Plymouth.

Factory Representative:**C.P.O. BOX 1778, AUCKLAND.**

When you're at the
**WELLINGTON
RADIO
EXHIBITION**

examine every chassis
on show, then compare
them all with the "Ulti-
mate"—the greatest re-
ceiver of all time—in
Messrs. HAMILTON
NIMMO & SONS'
Stand.



Price:

£56

Complete, ready to
attach to aerial.