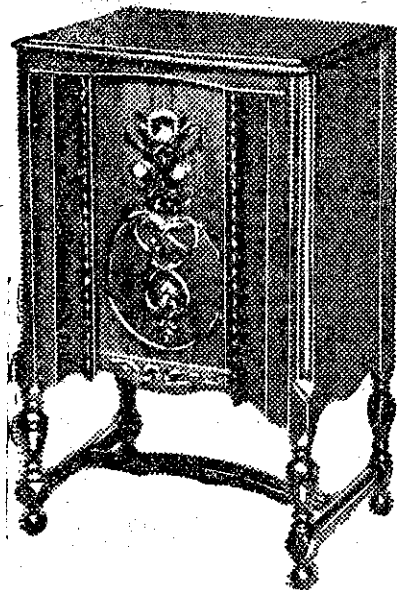


speaker, four screen-grid a.c. valves, one 227 and one 245, with a 280 rectifier, four tuned circuits for selectivity, tone control, compact—it is only 22 pounds, and stands 14 inches, and requires no aerial on the local stations. Although small, it loses nothing when results are to be obtained.

The Lyratone combination is also a midget, for it is only 19 inches in height and 15 inches wide. It is a five-valve set utilising three screen stages. The gramophone, which is made accessible by removing the top of the set, is of the induction type, and is provided with a volume control and automatic stop.

The "Bantam" midget set will also be introduced this season by Messrs Crawford and Finlayson, who are handling the Lyratone. This is a superheterodyne 7-valve set utilising three screen-grid valves, two 227 type and one 245 type valve. It is a wonderful companion with a wonderful range.

Colonial



THE Colonial Princess is a full-size console model, employing three screen-grid valves with a double pre-selector circuit in front of the first. The over-all sensitivity of the set is better than 5 micro-volts per metre on antenna height. When recently testing this set with an improvised aerial it brought in several American stations at good volume. As far as selectivity is concerned it is claimed that it will eliminate 2FC and 4QG, Brisbane, when operated quite close to 2YA, and when near 1YA, 2BL and JOAK can be brought in. The volume control operates on a new principle, which makes for distortionless reproduction; even when throttling a powerful local tone is faithfully maintained. Maximum sensitivity over the whole scale is obtained by an arrangement which automatically increases the coupling as the dial is turned towards lower frequencies. Tremendous volume can be handled without showing any signs of distress, due to the provision of an exceptionally powerful speaker. Pick-up terminals are also incorporated, and a change-over from radio to gramophone is accomplished by turning the dial to phono position.

The Colonial Compact is a smaller set, 16 inches high, employing two stages of screen-grid radio frequency, and screen grid detector. All the vital parts

are made 50 per cent. over size, to ensure long life with trouble-free operation. The set also employs a four position tone control.

The new models arriving shortly will include a radio gramophone combination which, though equal in all respects to the present model, will be not nearly so large as the standard combinations.

Clarion Radio

FOR many years, the Transformer Corporation, of America, supplied manufactured materials for many of



America's leading firms, and when last year they decided to enter the receiver field they carried forward the good name they had earned in component manufacture. Their huge plant and experience enabled them to produce everything

that goes to make up a radio receiver at a very low cost. And it must not be imagined that by making a set for a low sum the product was a cheap one; essentially it is not, for they have gained a position among the leaders of radio in the States. This season will see many of the new innovations incorporated in Clarion sets, the product of the Transformer Corporation. They will be displayed at the Auckland exhibition.

The Silver Ghost Speaker

THE Silver Ghost is a new Farrand inductor dynamic speaker. This type of speaker, which became very popular last year, works upon a different principle from the ordinary type in that it requires no field current and has two magnets arranged somewhat similarly to the ordinary cone instead of the pot of the dynamic speaker. The armature moves parallel to the face of the magnets, not perpendicular to them, as in the case of the cone speaker.

The Silver Ghost is provided with a special terminal panel at the back, by which the impedances can be matched to any valve or valves in push-pull. If an anode current of more than 20 amps. flows, however, a special output transformer should be used. The Silver Ghost is obtainable either as a unit to be placed behind the baffle or in one of several different styles of attractive cabinets. The New Zealand agents are Messrs. L. M. Silver and Co.

Ferranti

IN England, Ferranti products are recognised as standard by all constructors, and this reputation is gradually extending to world-wide dimensions. One notices that even American experimenters are beginning to use Ferranti components.

This year new products will be sold in New Zealand, among these being two new transformers, a.f. 6 and a.f. 8. The a.f. 6 is very similar in appearance to the well known a.f. 5, but it has a core 50 per cent. larger and, notwithstanding the ratio is 7-1, the inductance is sufficiently high to maintain the good quality reproduction. The curve of this transformer is similar to that of a.f. 3, but it gives double the amplification of that transformer. It has been designed for



ARCTURUS TRAIL BLAZER of the RADIO INDUSTRY

Has won its leadership in the industry by consistently pioneering new valve developments.

- Standard Base A.C. Valve.
- Isolated Cathode Valve.
- A.C. Long-Life Valve.
- Quick-Heating Detector.
- A.C. Screen-Grid Valve.

And Now--

the pioneers of the new Variable-Mu and Pentode Valves, adopted by America's leading manufacturers.

Six times in three years Arcturus has been the FIRST to blaze the trail with these new and important contributions in Radio Valve Design.

Each time the radio industry has followed the trail blazed by Arcturus; each Arcturus development has accurately forecast the trend of radio progress; each new Arcturus contribution quickened the public acceptance of radio.

When next purchasing your A.C. or Battery Valves—Demand ARCTURUS the 'Quick Action' Blue Long-Life Valves.

STOCKED BY ALL GOOD RADIO DEALERS!

Factory Representatives:

Radio Ltd., Commerce Building, Anzac Avenue, Auckland.

"THE VALVE WITH THE LIFE-LIKE TONE."