

# Two Colonial Leaders

## *that are making Radio History!*

"Colonial" is, and always will be, an exclusive radio. It has features no other set has, or can have. It is backed by one of the wealthiest and most distinguished corporations in the radio industry. It is the most completely perfect radio ever produced. Yet with all its complete individuality, amazing performance and super quality of construction, "Colonial" now costs no more than an ordinary radio. No wonder these two "Colonial" models are meeting with such amazing success.

# COLONIAL RADIO

**"RADIO'S CLEARTEST VOICE"**

## The New Colonial "COMPACT"

The "Colonial Compact" is a standard set built into a small space.

Full size 9-inch dynamic speaker.

245 valves in push-pull.

50 per cent. oversize transformer.

Performance that will equal any standard set on the market—excepting only the "Colonial" 33 A.C.

Beautiful walnut cabinet with Tarso inlay, every part exactly identical in quality with those in its larger brother, the Model 33 A.C.—Tone, power, distance, selectivity, such as you have previously heard only in the best of the standard sized sets.

And its price is only

## £29/10/0

See it to-day at your local agent's. Its superb beauty, its amazing perfection of tone, its sensational performance, will win your instant admiration.

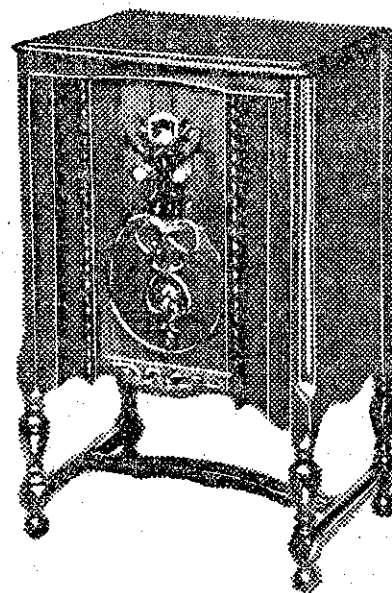


Dr. Fulton Cutting, chairman of the Board of Directors of the Colonial Radio Corporation, guiding genius of Colonial's engineering destinies.

### Distributors

Auckland: Briscoe & Co., Ltd.,  
Customs St. E., Auckland.  
Taranaki: Newton King, Ltd.,  
New Plymouth and branches.  
Wellington: N. R. Cunningham,  
Ltd., P.O. Box 147, Masterton.  
Canterbury: Briscoe & Co., Ltd.,  
Christchurch.  
Otago: Briscoe & Co., Ltd., Dunedin.  
Southland: Briscoe & Co., Ltd.,  
Invercargill.

In design, construction and performance, Colonial Radio is completely different from anything you have yet heard. It embodies exclusively the patents and inventions of Dr. Fulton Cutting, D.Sc., M.A., Fellow Inst. R.E., an engineering genius, a prominent musician and director of the New York Opera Company. **PURER TONE, GREATER SENSITIVITY, BETTER SELECTIVITY**—all with lower valve replacement costs than with any comparable set on the market.



"COLONIAL" PRINCESS CONSOLE  
COMPLETE **£55**

(Inland price slightly higher).  
With this great radio at such an amazingly reasonable price, is it any wonder that the tremendous Colonial plants are operating on 24-hour production at peak capacity when practically every other manufacturer can operate on 70 per cent. time only?

**MAKE NO MISTAKE!—YOU WILL WISH YOU HAD BOUGHT "COLONIAL"**  
**HEAR IT NOW BEFORE YOU DECIDE.**

**Factory Representatives:**

## N. R. CUNNINGHAM LTD.

**P.O. BOX 147, MASTERTON**