

Identification Wanted

ON the 18th at 1.30 a.m. station heard broadcasting a boxing contest. The decision was given on points. Announcer said time was — minutes to ten, and that they were returning to the studio. From here a record was played, followed by another ("Pat on the Back"). An announcement followed from the studio, but I could not catch it. It came in between 2YA and 2FC. —J.S. (Hamilton).

STATION heard at 1 a.m. on April 20 operating on approximately 1210 k.c. (248 m.). Call sounded like 3BY, Melbourne. —"Newchum" (Wellington).

STATION operating on approximately 333m. (900 k.c.), heard closing down at approx. 7.30 p.m. on April 20. Last item was an organ solo. —J.J.W. (Renanga).

AT approximately 11.15 p.m. on the 23rd a Jap was heard on 449 metres (668 k.c.). A man was talking. Signals R3. Also at 11.20 p.m. another station on approximately 900 k.c. (333m.). Orchestral items, lady announcer. Signals R4. —"Bob." (Wellington).

WHAT American station operates exactly on 2FC's frequency? I cannot find one in the latest American call-book, and yet I can hear him quite distinctly. —J.P.C. (P.N.).

Stations Identified

W.B. (Gisborne): Station on 70 metres is undoubtedly the Russian RV15, which commences transmitting

at 9.30 p.m., N.Z.T. The one on 121 on your dial is probably 3RO, Rome, which has a lady announcer. "Six-Valve" (Christchurch): Obviously WENR, as you heard the announcer mention Husk O'Hare and His Gentlemen of the Air (referring to the jazz band which frequently broadcasts from that station). "Jackmack" (Dunedin): The American station in close proximity to 3YA is KFVD, Culver City, and broadcasts an organ programme from the Hal Roach Studios every Tuesday evening. B.W. (Stratford): Station on approximately 361 metres is probably one of the Indian stations giving the call VUB, Bombay. They sign off at about 4.30 a.m. with the National Anthem, and were heard by me about three weeks ago. —D.T.H. (Timaru).

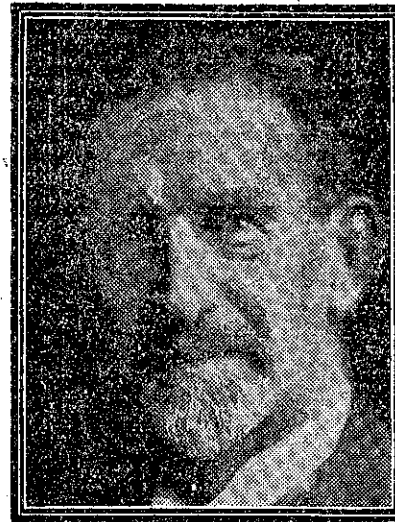
"MOREPORK" (Ohakune Junction) —Station one deg. below 2ZL broadcasting a Japanese programme was KGMB, Honolulu. These programmes are a common feature of that station. —"Dud" (Bay of Plenty).

RE "Radio Oxley" heard testing on 262 m. (1145 kc.), a letter from 4BC, Brisbane, under date April 8, states, inter alia: "Our new transmitter is still in the test stages, and is transmitting a regular test under the call '4ME, Oxley.' Should you pick these up we would appreciate a report." —"Mike" (P.N.).

News and Views of the D.X. CLUB

"QUELQU'UN" (Carterton) and J.V.D. (Cambridge). — Station heard on 1500 kc. (200 m.) was "Glade House Radio." It is located at the head of Lake Te Anau, at one end of Milford Track. Noise like a circular saw is due to the transmitter. This is so loud here that it is very hard to distinguish speech. —"Amuri" (Invercargill).

R.A.S. (Mamaku). — I heard station WOI, Ames, Iowa, on October 26, 1930, at 9.30 p.m., on a frequency of 640 kc. (468 m.). I wrote for a verification, but have not received a reply.



MR. JOHN BALL,
editor-announcer of the R.B.C., who
took an active part in the opening of
the Dunedin Radio Exhibition.

I think Mr. Ellis's idea of a DX cup badge is excellent. —"Red Bird" (Wellington).

"SIX VALVE" (Christchurch): WENR, Chicago, 345m. (870 k.c.). "Seven Kicker" (Okoroire Springs): The station heterodyning 2BL may have been either WABC, or WBOQ, both of New York, on 349m. (860 k.c.). Station behind KGER is WKBH, La Crosse, Wisconsin, 217m. (1380 k.c.). Station near 2YA's harmonic is KFOA, Los Angeles, 209m. (1430 k.c.), or KPXY, Spokane, Washington, on 224m. (1340 k.c.), 1 kw. —R.J.R. (P.N.).

"JACKMACK" (Dunedin): American on 1000 k.c. (300m.) was KFVD, Culver City. —N.J. (Masterton).

"CERSTRIA" (Whangarei): Station you logged on March 29 was 3GL, Geelong Broadcasting Proprietary, Ltd., operating on 1440 k.c. (214.2m.). Aerial output, 50 watts. W.B. (Linwood): In a magazine recently to hand from America I noticed an article on the establishment in Siam of two new broadcasting stations, the first in that country, so "Radio Bangkok" would be O.K. D.N.A. (Timaru): In a letter

recently received from Mr. J. C. Randall, plant manager of station WTIC, Hartford, Conn., he gives their schedule as follows: —Mondays, Wednesdays, Fridays, transmit on 660 k.c. (454m.) from 8 a.m. to 4 p.m. and from 4.15 p.m. to 12.30 midnight on 1080 k.c. (283m.); Tuesdays, Thursdays and Saturdays on 1060 k.c. from 7 a.m. to 4 p.m. and from 4.15 p.m. to 1 a.m. on 660 k.c.; on Sundays 10 a.m. to 7.30 p.m. on 660 k.c., from 7.45 p.m. to midnight on 1060. All time mentioned is Eastern S.T. When in synchronisation with WEAF on 660 k.c. transmission, their programmes will be identical with those of WEAF. I notice that the majority of the New Zealand "B" stations have been re-established, the latest, 2ZK Wanganui, being "on the air" this week. —"Thrace" (P.N.).

"STATIO" (Nelson): Station heard below 2UE, Sydney, would be 2ZF, Palmerston North, relaying 2YA's Wednesday night's programme. 2MV, Mossvale, may be found slightly above 2NC, Newcastle. Apologies to 4ZP, Invercargill. I received two cards by the same mail. G.C.H. (Masterton): A few nights ago I heard 2ME, Sydney, when they stated they were operating on 197m. (1510 k.c.). B.W. (Stratford): "Cromdale" (Otago) was mistaken when he quoted KSTP. It should have been KFTB. —J.P.C. (P.N.).

DX Topics

Frequencies of European Stations.

HERE are the frequencies of some European stations for early morning DX-ers: —Heilsberg (Germany), 75 kw., 1085 kc. (276.5 m.); interval signal: 2 notes (D flat, A flat), repeated for 41 seconds, followed by similar interval. Radio Toulouse (France), 8 kw., 779 kc. (385.1 m.); man announcer; interval signal: gong. Strasbourg, P.T.T. (France), 15 kw., 869 kc. (345.2 m.); interval signal, deep toned gong. Langenberg (Germany), 17 kw., 635 kc. (472.4 m.); Vienna (Austria), 20 kw., 581 kc. (516.4 m.); Katowice (Poland), 16 kw., 761 kc. (394.2 m.). —N. Jenkins (Masterton).

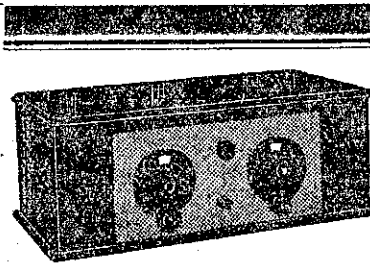
Presentation of DX Cup.

I HAVE just been listening to the presentation of the DX cup to Mr. Ellis from 2YB (I clapped, too, but I'm afraid I wasn't heard). In last week's notes, KOX should read KBX. Since receiving the DX notepaper on 15/4/31 static has been terrible here, and on two evenings it was impossible to hear any of the YA stations' programmes. A very handy booklet for DX-ers, "Radio Log and Lore," may be obtained from the Te Aro Book Co. (2/-). It contains a list of the world's broadcast and short-wave stations, airline distances between the different countries, and much other useful information. I would advise all DX-ers to secure a copy. I think Mr. Ellis's suggestion re a DX club members' badge is excellent. The last overseas mail brought verifications from KTHS, KJR, KTAB, WMBI, and a number of others. —"Seven Kicker" (Okoroire Springs).

DX Club Badge Favoured.

I THINK the suggestion put forward by Mr. Ellis for a club badge an excellent one, for not only will it give all those who wear it the feeling that

Build Your Own Receiver It's Cheaper!



But be sure you build a receiver that will give you something outstanding in performance. Choose a Lissen Screen-Grid Three Kit Set —it's easy to build, and the results will delight you. In a few hours you can transform the box of parts into a remarkably neat, compact, and perfectly balanced receiver, that gives razor-edge tuning, with range, volume and rich, clear tone. Your nearest radio dealer will give you full particulars of the Lissen S.G. 3—See him today.

LISSEN

SCREEN- GRID THREE

If you have any difficulty in obtaining particulars write to
N.Z. Distributors:
ABEL, SMEETON, LTD.,
27-29, Customs St. E., Auckland.

PRICE OF KIT,
with full instructions and diagrams
for construction—**£6**
Or complete with Speaker,
Valves, and Batteries (no
cabinet or aerial)—**£13/12/-**