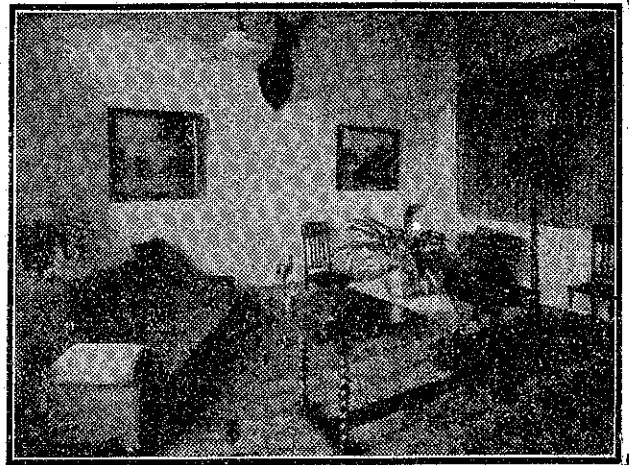


The corner pictured above is a portion of 3YA's lounge, which accommodates many waiting artists during every session. A speaker is provided so that they can hear the concert as it is going over the air.

On the right is shown a corner in the smoking lounge at 3YA.

The lower illustration depicts one of the studios at 2YA. Altogether there are four, each serving a different purpose. Generally all four are used in the course of a day's programme.

## Views of 2YA, 3YA and 4YA Studios



Above.—This is another corner of the lounge at the Christchurch studio.

Below is pictured one of the well-appointed lounges of the new 4YA, situated in the buildings of the "Evening Star" in Stuart Street, Dunedin.

