

Answers to Correspondents

A.O.H. (Otorohanga).—Your suggestion re DX pages is quite a good one, but unfortunately it has been found necessary to reserve the two centre pages for other purposes. Re N.Z. and Australian B class stations: From time to time, as new B class stations appear on the air, the particulars when available are published in the "Radio Record." These are, however, not always to be found on the DX pages.

Addresses & Addresses Wanted

"CATCH 'EM (Wellington).—WBBM, Atliss Investment Coy., Chicago, Illinois.

WOULD "Gregg" (Dunedin) please send his address?

Identification Wanted

A WEAK station heard on November 22, operating on 1380 kc. (220 metres). Heard between 7.30 p.m. and 8 p.m. Too weak for speaker to be understood.—"Catch 'Em" (Wellington).

ON November 15, station on 221's frequency. There was some talk about Chicago. Call sounded like New York. At 9.5 p.m., band, announcement, jazz music, announcement, jazz music, with man singing, announcement, 9.15 p.m. Closed down. Is there a station with call sign 1ZK? Does 2ZE, Eketahuna operate 1 degree above 2YB? What was the station on 221's frequency testing on Wednesday, November 19, at 9 p.m.? It was a New Zealand amateur. Two items heard, were "Sleepy Valley" and "Honey."—"Amuri" (Invercargill).

[2ZE, Eketahuna, operates on 247.8 metres (1210 kc.), while 2YB, New Plymouth, operates on 243.8 metres (1230 kc.). To our knowledge there is no station operating with the call 1ZK.—Ed.]

STATION heard on Wednesday night, November 26, from 8.30 p.m. till 9.35 p.m., when he closed down for a few minutes. His wave-length was about 225 metres (1330 kc.), and he gave address as 217 Gladstone Road, Gisborne, telephone 1859, but no call sign. Some of the items broadcast were: "Broadway Melody," "Spring Song," and "Jeannine." The announcer said it was blowing hard in Gisborne, and he would like to know how they were being received. I think J.P.C. (P.N.) inquired about this station.

JANETTE ROTARY CONVERTERS

For the Operation of A.C. Electrical Apparatus in D.C. Areas.

Compact, Trouble-free, Filtered Type for Radio use—No Hum.
12-volt type for Delco Lighting Plants for A.C. Radio Sets
Send for Descriptive Catalogue.

MOORES

Sole N.Z. Agents:
166 Queen Street, Auckland.
P.O. Box 1029.

News and Views
of the
D.X. CLUB

tion in issue of November 7.—"L.P." (Wellington).

STATION on about 550 metres (555 kc.), November 22, and occasionally during last week. Very distorted. Strength fairly good. Programme seemed to consist of gramophone records R.J.R. (P.N.).

SUNDAY, 23rd instant, at 1.30 p.m. to 1.45 p.m., on 1150 kc. (260 m.), dial 36. I heard a station about R5 playing: 1.30, "British Grenadiers," "Annie Laurie" (medley); 1.34 p.m., "Happy Days Are Here Again"; 1.40 p.m., piano and vocal numbers. Closed down at 1.45 p.m. Station call not given. Heard same station a fortnight previous.—"Stores" (Dunedin).

TWO stations heard early on Sunday morning, November 23, broadcasting what sounded like a football match. The announcer said that "play was carried from the 45yds. line to 7yds. line," etc. One was just above W2XAF's wave-length, and the other a degree below. A foreign station on about 30 metres at the same time on telephony. Bangkok, Siam was heard on 40 metres (about). Foreign station broadcasting music on 45 metres on Sunday morning.—J.C. (New Plymouth).

Stations Identified

J.T.S. (Napier).—There must be some mistake about my saying that WMBR is situated in Chicago. "Amuri" (Invercargill).—The Japanese stations are JOKH and JOAK or JOCK. I would like to get in touch with J.T.S. (Napier).—M. Ellis, Barrett Street, New Plymouth.

P.K.B. (Oamaru).—You do not say what wave-length you heard this station on. If an 80 metres, it may have been 3AG, Greymouth, or 4BL of your own town, both owned by lady "hams."—J.C. (New Plymouth).

D.X. Topics

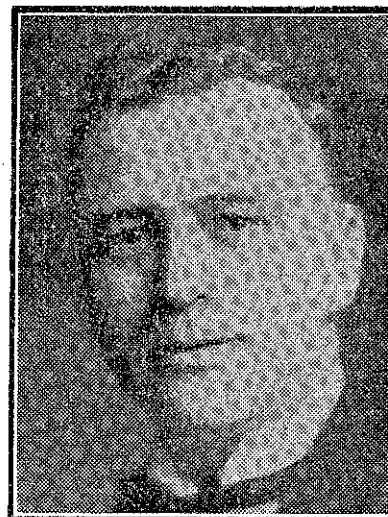
Japanese Stations.

I RECENTLY received Q.S.L. cards from JOHK, Sandai, and JOAK, Tokio. JOHK forwarded a complete list of the stations in operation—eleven in all. Broadcasts commence at 6 a.m. and continue till 9.40 p.m. JOAK forwarded a photo card of JOJK, with time schedule, etc. JOHK, JOAK,

JOCK, JOBK, and JOFK form the "chain" broadcasting system. To stations not listed in the Guide are JOJK, Kanazawa, 710 kc. (422 m.), 8 k.w. (input), and JFAK, Taihoku, 900 kc. (333 metres 10 k.w.—"Bob" (Wellington)

Station Particulars.

STATION WSXAL usually relays the WLW programmes and announcements (although occasionally the WSAI programmes go over this short-wave station, and also occasionally special programmes of international interest



WILL HANCOCK.

A deservedly popular 2YA tenor.
—S. P. Andrew Photo.

go over this station only). It operates on 49.5 metres (6060 kc.), with a power of 250 watts. The schedule is 6.30 a.m. to 11 a.m., 1.30 p.m. to 3 p.m., and 6 p.m. to 1.30 p.m., daily. They would very much appreciate reports on reception. Address: Crosley Radio Corp., Cincinnati, Ohio. W3XAL do not give any particulars. Address: National Broadcasting Company (Inc.), 711 Fifth Avenue, New York. PCJ is a crystal-controlled transmitter broadcasting, on a frequency of 9.59 x 10.6 cycles/sec. (wave-length approx., 31.3 m.). Maximum power, 27 kilowatts, with water-cooled transmitting and rectifying valves. Announcements in Dutch, English, French, German, and Spanish. schedule:

Wednesday, from 16.20, G.M.T.
Thursday, from 18.20 and 23.0, G.M.T.
Friday, from 0.3 and 18.20, G.M.T.
Saturday, from 0.6, G.M.T.

Mullard
THE MASTER VALVE

Embodies all improvements
known to Valve Manufacturers.

(This is from their latest Q.S.L. card). Address: N. V. Philips, Gloeilampenfabrieken, Eindhoven, Holland.—J.C. (New Plymouth.)

A Mystery Station.

I PICKED up the Gisborne station that "Jaka" (Wellington) mentions, on November 26, broadcasting on 12J's frequency (1/2 degree below 221). I first heard him at 8.30 p.m. and held him until he closed down at 10.30 p.m. Records were played throughout the whole programme with the exception that he closed down for about 20 minutes owing to being short of records. He also relayed the last two items of 3YA's programme. No call sign was given, and no items announced, but he gave his 'phone number and asked for reports to be sent in to 217 Gladstone Road, Gisborne. Here's your chance, "Proton" (Gisborne). Are you a Sherlock Holmes?—B.W. (Stratford).

I NOTICE in the "Radio Record" that "Squeak" (Christchurch) cannot understand how J.S. gets WENR, just above 2BL. I have picked up WENR practically every evening at about 6.30 p.m. (our time) during the last four weeks and always get it above 2BL. I have recently picked up Zeesen (31.38 metres) and G5SW (25.53 metres). They came through O.K. Last evening I picked up WBBM quite plainly, operating from Chicago on 889 metres (770 kc.). I am using a 4-valve s.g. battery set.—W.B. (Gisborne).

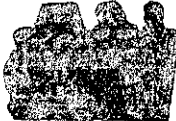
A Flexible 2-Valver.

I HAVE logged the following stations, chiefly on speaker, on a two-valve "inverse duplex" of my own make:—19 N.Z., 15 Australians, including Perth, on 1230 metres (244 kc.), its old wave-length, 4 Japanese, and 3 Americans. One morning about 3 o'clock some time ago I thought I heard the announcer say, "Station 7CA, Calcutta speaking." It was almost on top of 3LO, Melbourne's wave-length. The set is very flexible, one pair of coils tuning from 180 metres to 550 metres, another pair from 550 to about 950; and another which I constructed by way of experiment used to bring in Perth (sometimes). One morning I received an unknown on about 1400-1500 metres. The talk—and there was plenty of it—was distinctly foreign. On the 550-950 metre band there is nothing but Morse, but I get some enjoyment from that sometimes. I once heard a ship on the Atlantic transmitting fairly slowly.—"Inverse Duplex" (Rahotu).

KNOW the time all over the world with a
DX Clock.
Printed on Heavy White Paper.
Posted in Cardboard Tube.
9d. Each.

£30 - SCREEN - GRID RADIO CHASSIS, with Valves and Dynamic Speaker—or less Valves—£26.

3-224, 2-227, 2-245's,
1-280—8 Valves in
all. Triple S.G. R.F.
Power Detection,
Push-pull.



Full Rich Tone, Ample Volume,
Good Distance and Selectivity.

Write for Details

ROYDS-HOWARD CO.
CHRISTCHURCH