

pieces 3in. in diameter, the result is precisely the same. In most cases the water service pipes to the house is the best, though sometimes electrical disturbances can be reduced by having a separate earth pipe.—W. E. Davis (Picton.)

[Recent measurements tend to confirm this.—Tec. Ed.]

#### Overseas Programmes From Japan.

**R**ECEPTION has been excellent these last few days. To-night (September 5), although it is only 9 p.m., I am enjoying an R9 programme from JOHK. The transmission is apparently for overseas listeners, as many well-known English pieces are being played by a very efficient orchestra of English instruments. Quite a change for the Jap. stations. My latest logging is 2XN, Lismore. I have also this week heard 3TR, Trafalgar, and 7HO, Hobart. I have not been able to collect sufficient notes from the two latter stations to write for verification, but will get them again. I have not seen these two mentioned in the DX notes yet. 5AD, 3BY, and 4BC are coming in well with some good items, and a large amount of advertising.—"Amazon" (Palmerston North).

#### An Impending World-wide Broadcast.

**W**HILE listening to W9XAA, on September 10, the announcer stated that they would broadcast an international programme on October 5 from 9 p.m. to 5 a.m. C.S.T. (Sunday, October 5, 1.30 p.m. to 9.30 p.m., our time). Listeners are invited to listen to this programme, and send in a report of no less than 300 words. The reports must be interesting, giving details of modulation, fading, weather conditions, type of receiver, whether the listener is a short-wave enthusiast or an amateur, description of town, etc. Numerous prizes will be awarded to the best reports from different localities. W9XAA operates on 6080 kc's, or 49.39 metres, with a power of 500 watts, is crystal controlled, and 100 per cent. mod. If enough letters are received, W9XAA will broadcast an early morning programme from 12 mid. to 1 a.m. (4.30 p.m.-5.30 p.m.). W9XAA is the short-wave station of WOFL, Chicago, and is situated near Lake Michigan.—H.F.A. (Masterton.)

#### An Interesting Communication.

**W**E have received the following communication from KGMB, Honolulu. It should interest all enthusiasts.

"So many New Zealand and Australian radio enthusiasts are continuously writing us about our station in complimentary terms, I would like to have you quote for us the following:

"Station KGMB is located in the Royal Hawaiian Hotel (on the Waikiki Beach), in Honolulu, Hawaii. Honolulu is one of the Hawaiian Islands in the Pacific, 2300 miles from the mainland of California, and a territory of the United States. Address, Honolulu, Hawaii. We operate on 1320 kc, 227.1 metres, with a power of 500 watts. We are a day, on the calendar, ahead of you, less 2 hours. Our best concerts are Sunday night (Monday nights to you), 6 to 8 p.m. (4 to 6 p.m. to you). Your stations get us mostly Sunday nights 8 to 10 p.m. your time. Many New Zealand and Australian people come here to spend your winter time. It is spring time here continuously.—Honolulu Broadcasting Co., Ltd., A. Henery, general manager."

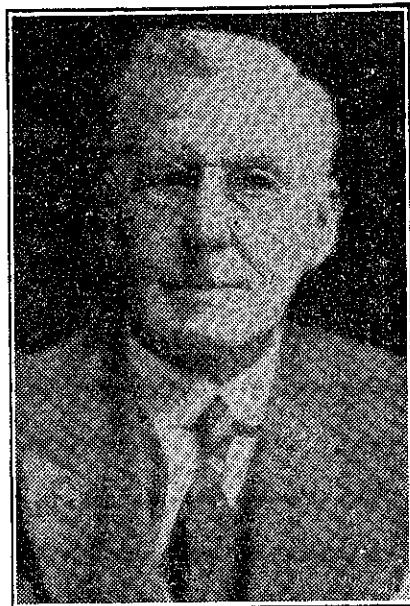
#### Sydney on a Crystal.

**MR. E. W. ANGLESEY** doubts that anyone has received Australian stations on a crystal and two valve amplifier. I built such a set and sent it to relatives at Mangere, Auckland, who reported hearing various stations. I verified this when there recently. Most of the main Australian and New Zealand stations could be heard on the phones on any average good night by turning the dial round, so there was no chance of these being picked up from radiating sets. The call signs were heard quite clearly. Locality is everything. I certainly could

not hope to duplicate this in Wellington.—S. Paul (Wellington).

#### Early in the Morning.

**I** READ with interest about the Milton Milton enthusiast and his 7 a.m. reception of a station between 2FC and 6WF. I have listened to this station on 446 metres every morning for the last two months. There is nearly always someone talking, and speech is not clear. The best reception I have had of this station was on August 29, at 6.15 a.m., after speech for two minutes or so, musical items were played there, reaching R8



MR. J. M. CLARK.

There are few elocutionists and play-producers in Auckland who are better known than Mr. Clark. He produced the first play from 1YA, and has often since delighted listeners with many excellent dramatisations.—S. P. Andrew, photo.

on the speaker for a minute or so, then fading right out, and coming back. On September 3, at 6.45 p.m., I heard someone say Johannesburg, and gave their time as 9.30 p.m., and faded away. I am still trying to clear this up. Perhaps someone can help me. Every morning I hear on 238 metres, 323 metres, 338 metres, 468 metres, 406 metres, 528 metres, 356 metres, 263 metres, and 296 metres. The 356 station I get from 6 to 7 a.m. I have cleared up one early morning station on 375 metres as ZTC. These stations are nearly always on musical items; sometimes you can just hear talking, but not clear enough to understand.—A. Greening (Inglewood).

#### Russia on Broadcast.

**H**AS any listener ever logged Soviet Russia on the broadcast band? I received RA42, Leningrad, on the morning of September 1, at 6.25 a.m. to 6.47 a.m., at good loudspeaker strength, R1-R8, very clear, with music and speech, carrying out a test transmission on a frequency of 1334 kc. I was using a 4-valve s.g. battery, operated received, and I think this is just about a record for the broadcast band. I would be very grateful to know through any DX member by correspondence or through the "Radio Record," if they have ever reached out this far.—A. Dryden (Poukika).

#### Surely! Knight of the Cat-whisker.

**I** HAVE been using a two-valve amplifier (R.R. circuit) for a considerable time, and with an average aerial and earth. Batteries have been kept in good order. I have repeatedly received the following stations at good phone strength: 2FC, 2BL, 3LO, 4QG, 1YA, 3YA, and

4YA. Also ZL2AW (Wellington) calling Hastings, and Hastings (ZL2BE) replying. I received an Auckland amateur whose call I have forgotten, and one or two other unidentified broadcast stations.—T.G.N. (Lower Hutt).

#### Out of Bed DX-ers!

**A**T 5.30 a.m. on Saturday, September 6, I made an early start on the set to clear up the stations on KPO's and 4QG's frequencies. Time was 5.30 a.m. I heard stations working on the following frequencies: 850 kc., 860 kc., 1320 kc., 1400 kc., 1150 kc., 1130 kc., 1070 kc., 820 kc. These were heard at various strengths, some just audible. The station working on 1070 kc. was playing orchestral numbers, R6 to R7. The station on 820 kc. was the strongest, so I devoted my time to him. It was a foreign station on fox-trots. The announcer had a very deep voice. The studio was poor, occasionally giving a bad echo of his voice. The announcements appeared to be in German, strength R9, with slight fading. Now, DX-ers, here are some scalps to clear up in the early morning.—S. Ellis (Okato).

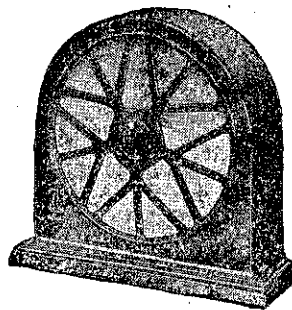
#### New Scalps.

**H**ERE is a new one, boys: 2ZL Hastings, right on the frequency of 2ZL, with a good strong signal. I have had a few more, too. 3ZK Carlton, VK2UR North.)

Bodallah, 7HO Hobart, KEGA Los Angeles, VK4LW Roscalli, VK3W1 Victoria, KBJK Beverly Hills, California. After the Australians had closed down last Sunday night I had a screw round and bagged some rare scalps: 7BY Bombay, 7CA Calcutta (at good strength), COMK Murkden, China, VRG Shanghai, KZRC and KZRM, Philippine Islands. I have heard church service from Calcutta on three Monday mornings recently, and without a great deal of atmospheric interference. On one occasion I heard the announcer state that the weather was beautifully fine, and then go on to describe the state of tea market. The singing at the church quite impressed me. This station can be heard on the dial setting of 3LO from about 1 a.m. 7BY Bombay is 1½ degrees above 2BL, KRG Shanghai a degree above 1YA at 11.30 p.m. I have just added another American to my log, KFKB, Milford, Kansas, coming in very strong with varied programme, at 11.30 p.m. Two items especially appealed to me, a Wurlitzer organ solo, "Stein Song," and vocal, "Roll, Roll, Rolling Along." The station was right on 2ZF and KNX. I also heard KFOX at 12.55 a.m.; announcer said he could hardly keep his eyes open as the time was 21 minutes past 4. "We are the early birds," he added. New fields to my log, KFKB, Milford, Kansas, a few more, too. 3ZK Carlton, VK2UR North.)

## ANNOUNCING

A new Cone Speaker  
at a Popular Price.



This handsome new W.B. Cone Speaker is finished in a beautifully grained attractive bakelite case.

The new W.B. Cone Speaker.

Price 3gns. Post Free

Here is the new W.B. Cone Speaker, which proved so attractive on the W.B. Stand at Olympia. Handsomely finished in beautifully grained, attractive bakelite case, its crystal clear notes and total absence of distortion give it an irresistible appeal to music lovers. The low bass notes are reproduced as faithfully as the highest notes in the musical scale.

The cone unit employs the famous Vickers Armstrong Cobalt Steel Magnet, noted for strength in handling volume.

The excellent finish makes it a cone speaker in every way up to the high standard so long associated with W.B. products.

Distributed and Guaranteed by—

The Electric Lamp House, Ltd.

27 MANNERS STREET :: :: WELLINGTON