

# Wellington 1930 Radio Exhibition

## Attractive Display Inspected by Thousands



THE 1930 Radio Exhibition held last week was of an outstandingly successful character. The preceding year's function instituted by the "Radio Record," and carried to a successful conclusion with the co-operation of the radio trade, showed that the public was interested in a combined display of radio apparatus and radio performances. With the proof of that fact the radio trade this year undertook full responsibility themselves for organisation of the 1930 Exhibition, and congratulations may be extended to them upon the success attained.

The closed type of stall which characterised the first exhibition was abandoned in favour of a uniform open type.

This certainly had the advantage of enabling the public to more effectively inspect the goods on display and ascertain the various points of difference. The background and general decoration of the stalls (by Hanna and King) highly artistic and most effective.

Unfortunately the weather conditions for the opening night were atrocious, and this naturally reduced the attendance of the general public to those of the most enthusiastic character. These, however, enjoyed to the full the splendid opening concert given by the Maori performers, and were able to inspect at leisure the fine collection of radio apparatus.

Opened by Hon. A. J. Stallworthy.

THE exhibition was finally declared open by the Hon. A. J. Stallworthy,

in lieu of the Postmaster-General, the Hon. J. B. Donald, who was unavoidably prevented from attending. In his remarks Mr. Stallworthy paid tribute to the service rendered by radio, making altogether a very fine speech. Mr. Stallworthy said:—

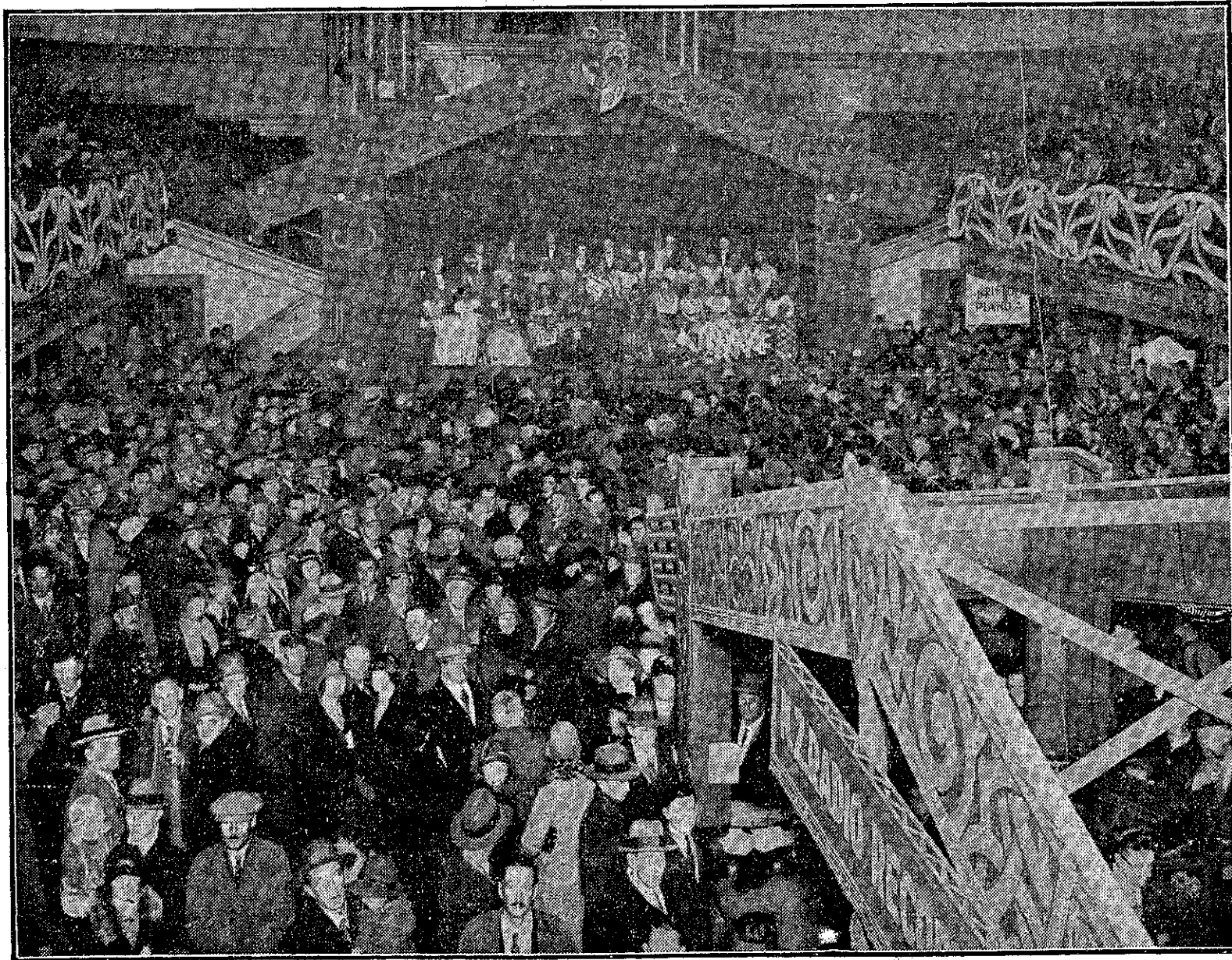
"An increase of 8500 listeners in the past year, and the evidence of the present year showing a further increase, is eloquent proof not only of a satisfactory broadcasting service but also of the fact that excellent sets and material are obtainable in the Dominion. The promoters of the exhibition are to be congratulated on the excellence of the exhibits, and the evident high standard of New Zealand craftsmanship is a matter for general satisfaction.

"We have in this exhibition some in-

dication of the terrific strides broadcasting has made in the course of a few years, not only bringing to the major activities of men and women new impulses, but to the boys and girls of the world all the exquisite sensations of Alice in Wonderland.

The primary appeal of broadcasting, and that to which it owes its popularity, is the fact that it makes available to both city and country homes, to castle and cottage, to rich and poor, the best music, oratory, literature, and current news and gossip of the world."

It annihilates distance and breaks down the isolation of the back-block settler.



A crowd of three and a half thousand assembled on the final night of the Wellington Radio Exhibition. The photograph gives some idea of the magnitude of the show and the general decoration of the hall.

L. Wallace, photo.