

## American Notes

### Items of Interest

MR. R. LESLIE JONES, Lyall Bay, writes: A most interesting correspondence takes place between Mr. Fred. Easter, Cincinnati, Ohio, U.S.A., and myself, and the following excerpts from a letter dated June 18 may be interesting to readers of "Radio Record."

Mr. Easter says: W3XAU works on two frequencies, 6060 kc., and 9590 kc. (49.5 and 31.28 metres), 500 watts, and operates from 8 a.m. until midnight daily, using either of above frequencies. 6060 kc. is used from 8 a.m. until 4

p.m., and 9590 kc. from 4 p.m. until midnight, excepting Thursday and Friday, when 6060 kc. is used all day to avoid interference with PCJ, which works on same wave-length. W3XAU is owned by the Universal Broadcasting Company, Philadelphia, Pa. The time given is Eastern time, which is 5 hours earlier than G.M.T.

The Honduras station HRB, mentioned previously in the "Radio Record," announced that they will be transmitting shortly with a 1000-watt transmitter on 49.9 metres (just under 9XF).

W9XF is working on 25.3 metres occasionally now.

A few very fine "Ham" 'phone stations on 20 metres are heard in Ohio, including 4AGR at Miami, Florida, modulation being equal to W2XAF.

I am afraid the "Hams" over here (U.S.A.) are going to get into trouble, and may get the bands reduced if they do not stick on their wave-length more closely.

The "Homer" (call sign G2GL) has been heard several times working London (G2AA and WOO) on 24 metres; also K10 at Kihuku, in the Hawaiian Islands, often tests on 'phone with KES at Bolinas, California; K10 is on 25.65 metres, and KES on 28 metres.

VK2ME (Sydney) is not as good as during American spring and winter. 'Phone charge from U.S.A. to Europe is 15 dollars for each minute.

NRH is now on 9.30 to 10.30 p.m. E.S.T., daily, including Sunday; the announcer speaks in English and Spanish. NRH is bad for rapid fading and modulation is poor.

PCJ has not the "wallop" that Zeesen has. Zeesen announces as Der Koenigswusterhausen, Kurzwelensender. HKT, Bogota, Colombia (S. America), is still on 48.35 metres.

An unidentified station at French Indo-China, on 18.75, works telephony with Paris.

G2AA, that works ships G2GN, etc., is located at Slough, Buckinghamshire, England; GBK, Bodmin, England, works CGA (Canada).

The U.S. and Buenos Aires 'phone stations (WLO and LSM) are between 13 and 14 metres.

Under date June 30 Mr. Easter says: PCJ has a bad hum, and is not up to the standard of Zeesen at the moment as regards volume.

5SW has them both beat in this respect.

CJRX comes in fine, but PHI has not come through for some time; nothing hardly will come in around 16 metres. PCJ is not logged during winter months.

NRH only uses 7½ watts power.

## A French Scheme

### Railroad Radio

A WELLINGTON correspondent writes: I have just received a letter from a friend in France, and he has enclosed a circular showing a new move the French are making on the railways by installing wireless for use of passengers. My friend, who does a lot of travelling through this country states: "On my quarterly trip on the Paris-Havre express in April, I had five francs worth of it, and found it remarkably good, even Daventry being switched on to us for a few minutes whilst we were running at 60 or 70 miles per hour."

### THE RADIO BOOKSHOP

(Te Aro Book Depot, 62 Courtenay Place, Wellington.)

"Thermionic Vacuum Tube" (Van Der Bijl) 26/-

Just arrived:—  
Morecroft's "ELEMENTS OF RADIO COMMUNICATION."  
19/- posted.

Deals with all kinds of Receiving Sets.  
A standard work for dealers and students.

Write us:—

TE ARO BOOK DEPOT  
WELLINGTON.

## DX Topics

(Continued from page 31.)

and pennant for 1929. Transmitter, Hartley oscillator, input 20 watts, Heising modulation. Address, 20 Elizabeth Street, Rosalie, Brisbane, Queensland." Mr. C. R. Morris, owner-operator, states: "Very pleased to receive your report, it being the first I have received from New Zealand. The wave-length of this station is about 225 metres (1330 kc.)." Has any listener picked up VPIA, Suva? This station comes in on about 379 metres (790 kc.).—Screen Grid 3 (Nelson.)

### New Loggings.

I WISH to thank R. Dixon (Brammer) for the information re WOC, Iowa, and WTAM, Cleveland (I had already identified this station). If Mr. Dixon will write to me at Tadmor, Nelson, I shall be very pleased to correspond with him. During the past week I have added the following stations to my log: 2ZI, Hastings, and 2ZP, Wairoa, both with power of only 5 watts; WENR, Chicago; WGN, Chicago; KYA, San Francisco; WFAA, Dallas, Texas; and WEAR, Cleveland, Ohio, which station is listed in 1930 "Guide Call Book" as not having been previously heard in New Zealand. These stations were heard on a 4-valve set, with H.F. screen grid.—E. W. Anglesey (Nelson.)

Radio Listeners' Guide, 1930 Edition.

Dealers and Booksellers 2/6, posted 2/3  
P.O. Box 1032, Wellington

Now Available.

## GreDX

THIS new All-Electric-Tuned Screen-Grid Short-Wave Receiver, the most powerful ever made, will give loud-speaker reception of London, New York, Moscow, and widely-distant broadcasting stations.

Call or write to

MR. HORROBIN,

Flashlight Corner, 2 Courtenay Place, WELLINGTON,

and get full particulars of this splendid N.Z.-made D.X. Receiver.

## The Add-a-Phone

is the finest

SHORT-WAVE RECEIVER

Made by the people who specialize in all kinds of Radio Repairs, Improvements, Re-modelling and Designing Radio Sets.

If in trouble Ring, Write or Call at

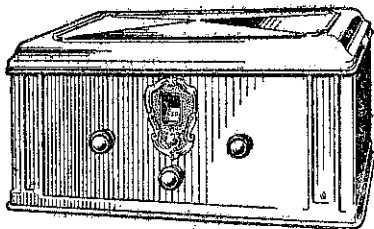
Mack's Radio Service

76 KENT TERRACE,  
WELLINGTON.

'Phone 20-798

## Outstanding Exhibits at Radio Exhibition...

### "P.E.6" Screen Grid Broadcast Receiver



The Pilot P.E.6 screen-grid Broadcast Receiver is a simple but reliable design and free from troublesome "Neutralising" and "Balancing"; comprises two stages of tuned radio-frequency amplification using screen-grid tubes, with both the tubes and the R.F. transformers fully shielded; a non-regenerative detector; and a modern audio amplifier system of the push-pull type. Tuning is accomplished by a single illuminated vernier dial, the only other controls being a power switch and a volume knob. The set is fully A.C. operated, all the necessary filament, grid and plate voltages being furnished by a Pilot K-111 power pack.

Valves used are 2 x P224's, 2 x P17A's, 2 x P227's, 1 x P280.

PRICE—P.E.6 Complete with Valves—  
Grawor Melodia Cone Speaker and metal cabinet ..... **\$32/10/-**

TERMS—Deposit, £10, 12 monthly payments of £1/19/6

### The "Super-Wasp" All-Wave Receiver

A great success—The Super-Wasp was used continuously throughout the term of the exhibition by the Amateur Transmitters for reception on short-wave of messages from all over the Dominion.

With the Super-Wasp you can travel the World. On short waves you have America, Australia, Canada, England, Manila, Holland, Russia, Germany and more other countries. On Broadcast Australia and New Zealand Stations.

In the ELECTRIC MODEL Three (3) P227's, One (1) P224, and One (1) P280 Tubes are used.

The BATTERY MODEL uses Three (3) P201's and One (1) P222 Tube.

MODEL K115 All-Electric—Complete with Valves and Speaker (no cabinet)..... **\$34/5/-**

MODEL K110 Battery Type—Complete with Valves, Speaker A, B, and C Batteries (no Cabinet) ..... **\$30**

EASY TERMS ARRANGED.

**Harringtons (N.Z.) Ltd**

40/42 WILLIS STREET (P.O. Box 738), WELLINGTON.  
142 QUEEN STREET (P.O. Box 1484) - AUCKLAND.  
Distributors for all Pilot Products for Australia and New Zealand.