

Stations Identified

TO anyone who heard a station close on 2YB's frequency, Saturday night (17th), on approx. 1250-1260 kilocycles (240 metres), from about 7.35 p.m. till 8.35 p.m., the following is given:—It was ZLIFT (80 metres and various), giving a test transmission on various waves, and operating from 64 Hepburn St., Auckland, on a power of 14 watts. He announced several times that he was on 150 metres, but as I worked it out at about 240 metres, I am inclined to think a mistake occurred somewhere. Various points about his transmitter were given. He was heard again from 11.5 p.m. till 11.30 p.m. This is probably the station heard by "Priess," Southbridge, on March 26, as call very much resembles 1ZC and 1ZP, though it was usually given with ZL.—Arthur E. Allen (Avondale.)

IN your last issue "Priess," Southbridge, asked for the address of 1ZC or 1ZP, Auckland. This station is 1ZB, La Gloria Gramophone Co., Auckland, 24 watts, 275 metres (1091 kilocycles).—"Atmospherics" (Carterton.)

Identification Wanted

WITH the advent of a few evenings of comparative freedom of static, DX, work has been much easier, the result being I have been able to log a few more stations. These include WCCO, KMTR, WSB, KOIN, 2ZP, and KMO. 2ZP, which I logged May 14, was rather difficult to hold, on account of continued fading. 2ZR was heard again May 10, also 17. Apart from the stations identified, I have a list of unidentified stations which were heard, strong enough to get a good list of items, but not the call signs. Identification of the following would be greatly appreciated.

Kilocycles 560 (535 metres), May 14, at 7.30 p.m.; May 15, at 7.50 p.m.; May 16, at 7.30 p.m., on dance items, songs, etc., at fair speaker; announcements in American, too weak to decipher. Is it KFEQ, Montana? Kilocycles 900, about (333 metres), after 1YA closed down, Wednesday, 14, at 10.1 p.m.

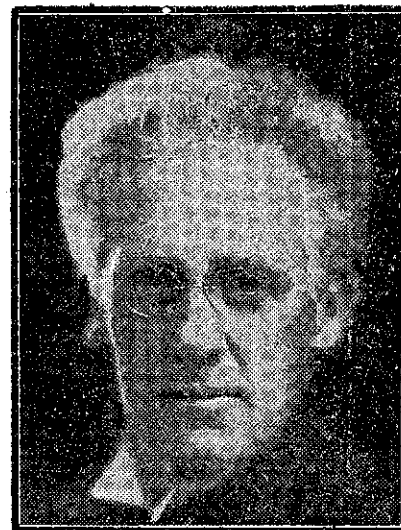
Kilocycles 1310-1320 (228 metres), May 14, from 8.40 p.m. to 10.40 p.m. On musical items, wave-length wandering and bad fading, gave the National Anthem at 10.40 p.m., so I conclude it is a New Zealand station. Heard also May 17 at 8 p.m., very weak.

Kilocycles 660 (454 metres), just below 4YA, Monday, 12th, 6.35 p.m. to 6.40 p.m., when disappeared. Musical items at R4. Also on 970 kilocycles (310 metres), a station was heard on Friday, May 16, from 3.35 p.m. till 6.45 p.m., when 2GB was heard close on it. On May 12 I heard the announcer at KFE, Los Angeles, say that it was that station's 960th night on the air. They must be counting the days for a celebration on the 1000th night. Re 6WF being heard, since I mentioned it in "Radio Record" about March 14, this station has come in regularly, except during periods of interference.—Arthur E. Allen (Avondale.)

IS there such a station as KDME, as that is what I took to be the call of an American station which I picked up at 6.45 to-night (16/5/30). Wave-

length was approx. 232 metres (1293 k.c.), and items, which were gramophone records, included "Sally of My Dreams," "Jeannine, I Dream of Lilac Time."

Also, has anyone solved the mystery yet of VJM, which is often on the air



MR. CYRIL TOWSEY,
a noted Auckland pianist. He will be heard in pianoforte solos from 1YA on the evening of June 4.
—S. P. Andrew, photo.

lately calling VAM and Melbourne Radio? This station goes off the air very abruptly, only to reappear a few minutes later, and repeat the same message, which usually includes the inquiry of how he is being received. Often he is heard for at least half an hour. He is received here at excellent loud-speaker strength.—"Fada" (Blenheim.)

[Our latest list does not disclose a station KDMF.—Ed.]

SINCE last writing I have identified one of the stations I inquired about in your issue of May 16. It is KOA, Denver, Colorado. In addition, I have added a few more stations to my log. On Sunday, 11/5/30, I picked up WFAA, Dallas, Texas, working on 800 k.c.s. (374 metres) with a power of 50 k.w. I heard them for about an hour when they were broadcasting an R.K.O. programme. I sent them a report. Just before 7.30 p.m. the same night I heard K.T.M., Santa Monica, Los Angeles. Both have been heard since.

On about 395 metres (760 k.c.) I heard on Friday night at about 11 p.m. what I took to be a Jap. It was broadcasting a play as several voices could be heard speaking at times. What station would this be? It was somewhere near 50L's wave. This evening, between 7.25 and 7.40 o'clock, on about 500 metres (600 k.c.), I heard a station at good strength. Items played

were:—7.25: "Painting the Clouds with Sunshine." 7.28: "Tiptoe Through the Tulips." 7.31: Piano medley, which included "My Blue Heaven," "Ramona" and "Jeannine, I Dream of Lilac Time." There were other pieces that I did not recognise. Is this 2ZR, Wanganui?

"Sonora," in the issue of May 16, mentions KZRM and also that he received it on the broadcast band. I would be pleased if he could mention at what time he received it as I would like to try to add it to my log. I have now received 47 stations on my five-valve set. This includes 14 Americans and the unidentified Jap, also the station on 500 metres.—L. R. Arnold (Tadmor).

CAN any member of the D.X. Club inform me which American station broadcasts on 1070 k.c. (280 metres)? This evening (16/5/30) he signed off giving frequency — and address as "Corner of 101 St. St. —" One of the items heard was "Roll, Roll, Rolling Along." All I caught of call was, I think, WT —. Static drowned the rest. He gave time as 1.20 a.m. eastern S.T. Would this be WTIC, Hartford, Connecticut? I would like to get verification if I can locate station? I also logged KGM, Waikiki, and KGU, Honolulu, KFI, and KMOX this evening. KFCX can be depended on to be not less than R4 almost any evening, and to-night was easily RS.—E. W. Anglesey (Tadmor).

DX Topics

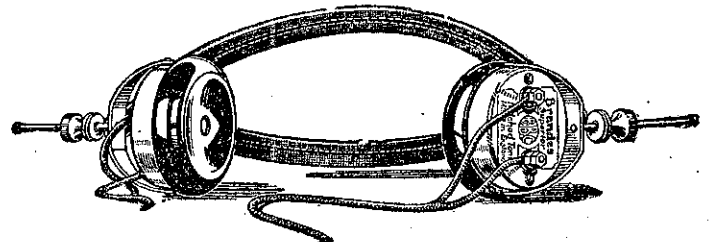
I LOGGED a new station on 1320 k.c. (227 metres) at 6.15 p.m. with the call KGMB, Honolulu, Hawaii, at R8. JQAK on 710 k.c. (422 metres) on May 12 at 10.15 p.m. The call sounded like J2AK, and I presume it is a Chinese station. This might be the station heard by Mr. Allen. KFOX was heard at 10.15 p.m. and signed off at 10.30 p.m. with "Three O'Clock in the Morning," a waltz. Volume was greater than that from 2YA. Also KGU, Honolulu, can be heard at great strength any evening. They sign off at 7.30 p.m., announcing power as 1000 watts and wavelength as 940 k.c. (319 metres). I heard a station on 1120 k.c. (268 metres) with a call like KMX or KGX. Can anyone identify it? KZRM, Manila, comes on well on 485 metres (620 kilocycles).—S. Ellis (Okato). [JQAK, Darien, Japan, operates on 395 metres, 760 kilocycles.—Ed.]

RECEPTION has been so good during the last week that I think the following notes on some of the American and Japanese stations may be of interest to readers:—On Monday, May 19, at 9.35 p.m., JOHK was broadcasting a lecture in English on the seasons of the year. The lecture ran thus: "Spring first season, it is warm," then it was repeated presumably in Japanese, then in English. After spring comes summer, second season, then it is very hot," again in Japanese, then in English, "After summer comes autumn, then it is not hot any more," and so on through the seasons, the announcer finishing up with "Good-bye, everybody," in English. Again on Wednesday, May 21, the same station was broadcasting at 10.30 p.m. an address to the people of Japan by a member. (Continued on page 12.)

Radio Listeners' Guide, 1930 Edition.
Dealers and Booksellers 2/6, posted 2/9
P.O. Box 1032, Wellington.
Now Available.

Brandes

The Name to know in Radio



Made in England
Price 15/-

OBTAINABLE FROM ALL RADIO DEALERS or
INTERNATIONAL RADIO Co. Ltd., Ford Bldgs., Wellington