

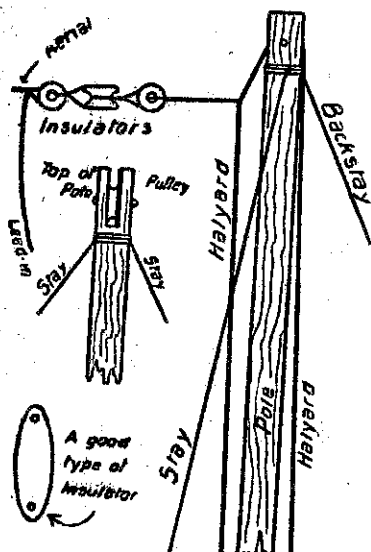
he attached a swan-necked insulator, such as those used by the P. and T. Department. From this he was able to carry out a wire support through which the lead-in was passed, by means of an insulator. Thus the lead-in was, under all conditions kept clear of the wall. The swaying of the lead occasioned by wind had no effect upon the tension of the strip connecting the outside and inside leads.

Various Hints.

IT is unwise to share an aerial, as the more powerful set is almost certain to rob the weaker of the waves. A compromise is to break the wire by a series of insulators, and to run a lead from each half.

In congested areas it is wise to erect aeriels at right angles to one another. This will minimise interference by radiation. For the same reason aeriels should run at right angles to the power lines, even if it means a shorter aerial. The effect will be noticed, especially if a sensitive receiver is used.

There is little danger from lightning, but in order that the reader may not



be the one in a thousand whose house is destroyed, and who loses all insurance, purchase and install a lightning arrester. Some firms are selling these very cheaply at present, and all receivers must be provided with one.

NOTICE to all Battery Users.

—THE— EXIDE Service Station

Under the New Management of MR. L. ALEXANDER.

For all Battery Troubles, Service, Repairs and Recharging, Ring new no.—

28-779

FOR PROMPT ATTENTION.

ON RADIO SERVICE—Short-wave Receivers, All-Electric Sets, Local Station Sets, Crystal Sets. You will have prompt attention by PHONING—

GREEN & DIXON

11 AND 12 AUTOMOBILE CHAMBERS.

35 TARANAKI STREET

WELLINGTON.

Sets Remade All-Electric.

2YA All-Electric Sets Made.

A New Broadcasting Station

AS station 4ZP, Invercargill, is amongst the most modern of the "B" class stations of New Zealand, listeners (and DX enthusiasts in particular) will be interested in a short description of the installation.

The transmitting apparatus stands four feet high and comprises a Hartley oscillator and a Heising modulator. There are three panels. The bottom one contains the transformer, where the power is transformed from 230 volts to 1000 on each side and passed through four rectifying tubes to rectify the A.C. current to D.C. current. From the rectifying tubes it passes to the filtering and checking system, then through condensers, chokes and filters and up into the transmitting panel. From here the current goes to the oscillating and modulating tubes. The checking of the transmitter is done through 4 metres, the wave length meter, the aerial tuning meter, the hot wire amp. meter and the volt meter. The modulating meter requires constant watching, the check on the wave length being through this meter.

The amplifying panel controls the music from the pick-up and microphone. The music is all faded in with a pick-up fader. A system of lights acts as a check on the microphone and gramophone pick-ups. There is also a clock pick-up fader for broadcasting chimes over a land line from the post office when the line is put in. Over all is a volume control.

The microphones in the operating room and the studio are the latest Western Electric models. The whole station is run exactly on the same system as the powerful YA stations.

The wavelength used is 258 metres (1160 kilocycles), the same as that of 4ZL.

A Static Eliminator

A REGULAR listener in the Gisborne district writes as follows to the Broadcasting Company:—

"Allow me to say that 2YA has been coming over here with absolutely astonishing volume. Some time ago I put a variable resistance in my aerial lead, and consider that you should advise, in the Record and other papers, all owners of powerful sets to use this cheap addition to their sets, and rub it in. 2YA has lately come in so powerfully that from 7.30 p.m. I can use practically the full resistance, which almost entirely eliminates static. For weeks past, using this resistance, static has been unnoticeable even during silences, while on stations weak enough to need full signal strength static has been rather bad for a full week past. 2YA is delivering the goods, and it would be to your benefit, and dealers' too, to show their customers how to get rid of it as much as possible. Radio is now popular with all members of our household."

Welcome

Thousands of N.Z. "Listeners-in" who own one of the famous Browning-Drake Battery Receivers will welcome this announcement releasing—

THE NEW 1930

BROWNING-DRAKE

ALL-ELECTRIC SCREEN GRID

9-VALVE RECEIVER

Ask any Radio Listener or Battery Set Owner, "What is the most famous battery receiver?" The reply will be, "Browning-Drake." Manufacturers have now produced a perfect all-electric receiver.

Here are some of the features:—

Merphon Trouble-proof Condenser which automatically seals itself if accidentally short-circuited.

Each set tested to insure perfect reception under individual conditions in every locality.

Special dynamic speaker enabling you to regulate tone, without distortion, from full volume to a whisper.

Voltage Regulation Adjustment (manual).

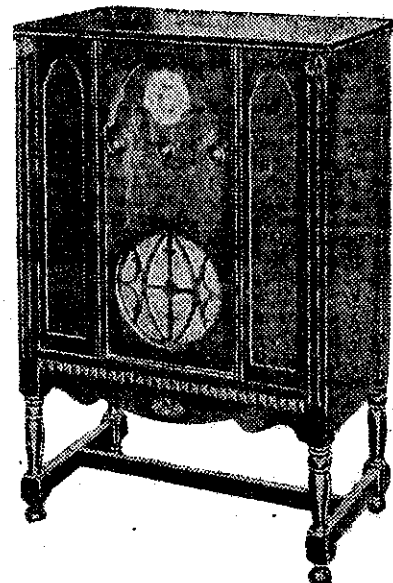
Five tuned circuits using nine valves.

Tuned antenna.

Push-pull audio.

Power detection (optional).

Band-pass filter effect.



MODEL 54.

9-Valve Screen Grid All-Electric Receiver.

This handsome console will add dignity and charm to the finest home.

The cabinet is of finest selected walnut and American gumwood with high lighted Duco finish. Single Dial control. Electro-Dynamic Speaker.

Price, complete with the famous ARCTURUS Guaranteed Valves, ready to attach to aerial.

Main Ports £48

Inland and Outports £49

You'll regret it if you purchase a Receiver before Seeing and Hearing the—

BROWNING-DRAKE

THE RECEIVER WITH A PEDIGREE.

Over 1,500,000 People listen-in daily on BROWNING-DRAKE Radio Sets.

If any difficulty in arranging demonstration communicate with:—

FACTORY REPRESENTATIVES, P.O. Box 1166, Auckland

DEALERS' NOTE—Some Territory still open for Representation.