

PUBLISHED WEEKLY

# THE RADIO RECORD

AND SERVICE COMFORT ECONOMY EFFICIENCY  
**ELECTRIC HOME JOURNAL**

Vol. III., No. 35.

WELLINGTON, FRIDAY, MARCH 14, 1930.

Price, 3d.

## A Revelation in Realism—

from a whisper  
to a brass band



### SCREEN-GRID RADIOLAS

—built by the RCA Engineers  
who Created Screen-Grid Radio

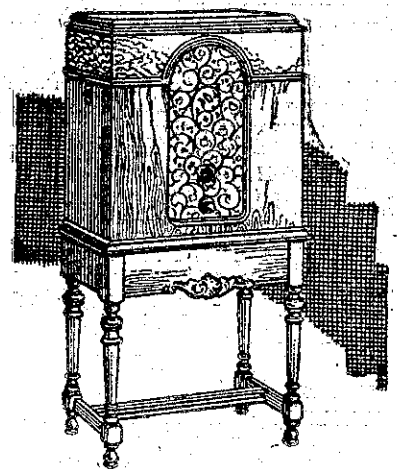
RCA Screen-Grid Radiolas IN ALL MODELS give you the superb tone and realism that have made Radiolas a synonym of radio perfection. Why? Because they are built by the RCA experts who created screen-grid and gave it to the radio industry.

Years were spent in RCA research laboratories perfecting Screen-Grid Radiotrons and the special screen-grid circuit which made screen-grid radio possible. RCA engineers then designed a screen-grid set in which interfering foreign noises were

eliminated without dulling the high and low notes and narrowing the musical range.

**TONE QUALITY**—First essential of fine radio—need not be sacrificed to gain the great advantages of screen-grid. Without tone quality this advanced type of high power radio is only a makeshift.

When you buy a Screen-grid Radiola you get super-power screen-grid performance as you have a right to expect it—plus all the qualities of fine radio reception that are guaranteed by the famous RCA Trade-mark.



RCA RADIOLA 46—The acknowledged leader in screen-grid "all-electric" radio. A cabinet model with built-in RCA dynamic reproducer.

RCA Screen-grid Radio is also available in Radiola 44—a compact and beautiful table model.

For those who wish music from the air or record, RCA presents Screen-Grid Radiola 47, the all-electric combination of Screen-grid Radio and Gramophone.

Send for Illustrated Folder and Address of nearest Radiola Dealer

**Amalgamated Wireless**  
(Australasia) Ltd.

G.P.O. BOX 830

WELLINGTON