

Enjoy The Thrill of

## TEST BROADCASTS WITH AN IMPROVED HIKER'S ONE!

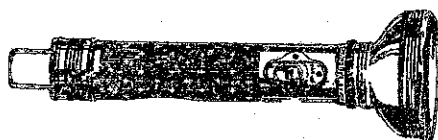
A one-valve Kit Set that is just the thing for an all-night vigil listening to the tests! Marvellous headphone reception from many stations. This 1938 HIKER'S ONE is better than the original 1937 set, which took New Zealand by storm!

**EASY TO BUILD!**

**CHEAP TO OPERATE!**

**WONDERFUL IN PERFORMANCE!**

The Hiker's One has proved to be one of the most popular of our Kit Sets, and hundreds of these little "Battery Misers" are in use every day all over New Zealand, in cities, in bush country and backblocks, where power is not available, and the average battery receiver expensive to run. In country districts (away from powerful "local" stations) reception of all main New Zealand and many Australian stations can be had in the evenings, while your nearest YA stations will come in during daylight, even in summer. We have had numerous letters from owners of the Hiker's One, telling us how pleased they are with its performance. Get yours NOW—and be one of the many satisfied owners of this WONDER SET!



Cat. No. R.T. 816

Postage 8d. extra.

**5/11**

**SPECIAL OFFER!**

**SAVE 2/-**

Men! Boys! Everyone! Here's a bargain it ever there was one! A well constructed, five-cell, focussing torch with 1000ft. range and large head, which usually sells for 7/11. Don't fail to take advantage of this outstanding offer.

Cat. No. R.K. 28 (with batteries)

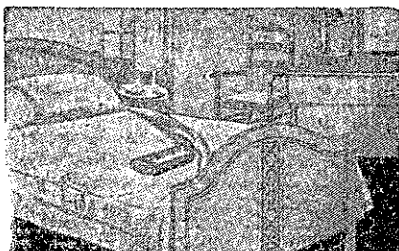
**33/-**

Headphones extra.

Or Cat. No. R.K. 29 (without batteries. Headphones extra.

**28/6**

POST FREE!



### COLDER NIGHTS AHEAD!

Be free from cold feet! Get an OXFORD BED WARMER! To heat it you simply connect it to the power supply for six minutes, and, when disconnected, it will retain a comfortable heat under the bed clothes for about six hours. Inexpensive to run, costing about 1d. per week for current.

Cat. No. R.E. 66

Postage 1/- extra.

**8/6**

ea.

### LISSEN GLASS CELL ACCUMULATOR



Two-plate type, with thick, massive plates. Will hold up for a long time when used at low discharge rates, and will retain their charge for long periods. Thick glass containers. Ready for use when acid is added, but best results will be obtained by charging before putting into service.

Cat. No. R.A. 121.

**5/6**

Postage 8d. extra.

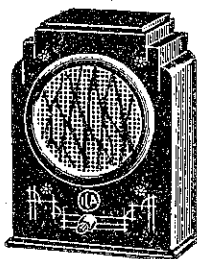
2-volt 10/20 amp.  
Size 2 3/4 x 2 3/4 x 5 3/4.

### I.C.A. EXTENSION SPEAKER.

A radio for every room in the house! An excellent 3in. high impedance magnetic speaker, in handsome black bakelite cabinet as illustrated.

5 1/2 in. wide,

6 1/2 in. high by 2 1/2 in. deep. Easily attached to any set and has "on" and "off" switch controlling each individual speaker. Fully enclosed with insulated back cover for protection against dust, etc. Supplied with clips for extension cord or wire connection, and instructions for connecting.

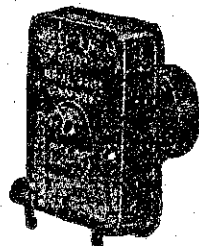


Cat. No. R.S. 750

Post Free.

**29/6**

### IMPROVE YOUR RECEPTION.



Connect one of these TELSEN AERIAL SERIES CONDENSERS in your lead-in wire, and if it does not improve your reception from distant stations, return it and we will refund your money in full!

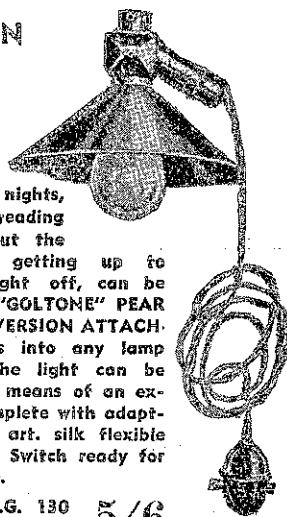
Cat. No. R.C. 883

Postage 3d. Extra.

**3/6**

### READ IN BED!

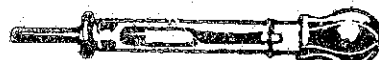
On these cold nights, the luxury of reading in bed, without the necessity of getting up to switch the light off, can be yours with a "GOLSTONE" PEAR SWITCH CONVERSION ATTACHMENT! Fits into any lamp socket and the light can be turned off by means of an extension. Complete with adaptor, 6ft., twin art. silk flexible cord and Pear Switch ready for immediate use.



Cat. No. R.G. 130

Postage 4d. Extra.

**5/6**



### HOW'S YOUR BATTERY?

Avoid being caught with a "FLAT" Battery! Get one of these full size hydrometers and know, at all times, the condition of your car or radio battery.

Cat. No. R.M. 300

Postage 4d. Extra.

**2/11**

ea.

### THE ELECTRIC

## LAMPHOUSE

27R MANNERS STREET,  
WELLINGTON.