

AIRZONE

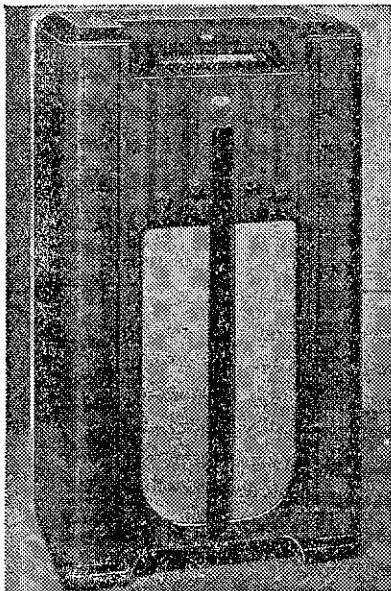
as PUBLIC ENTER

Two years ago Airzone levelled sights on New Zealand. Coolly and deliberately it set out to bring to this market a line of fine radios that would definitely outstrip competition. To-day, after only eight months of active merchandising in New Zealand, Airzone's position is established, not on freak design . . . not by building down to a low price . . . but on sheer merit as expressed in Radio beauty, value and ability!

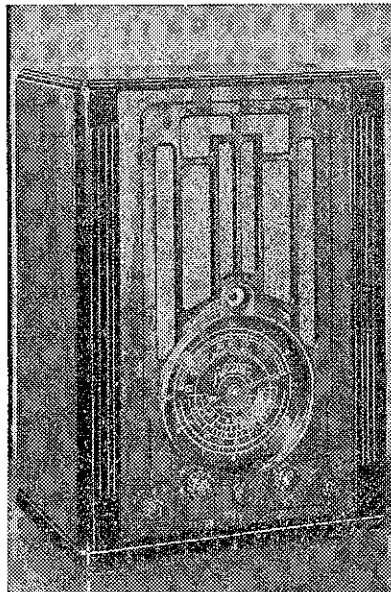
Each of the new Airzone models is a thing of beauty, schooled in mature modern styling. Each has beneath flowing planes and lustrous woods, a chassis durable, workmanlike, equip-

ped with every advancement known to modern science. And each has that easy capacity in operation, the world-wide range and the perfection of tone, the fine accuracy of reproduction that distinguishes only the superlative Radios. These things are so true and so obvious that we ask you to simply hear and see Airzone at your dealer's.

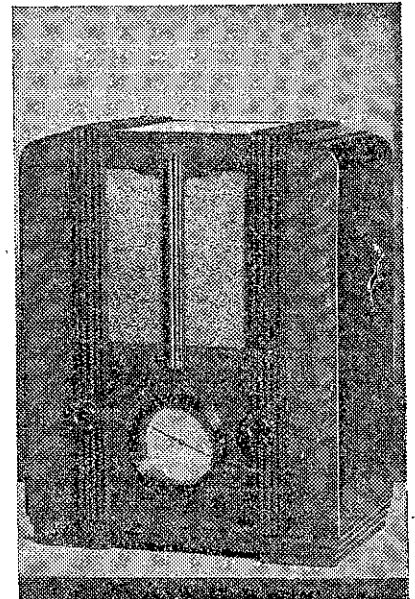
Mr. J. Sullivan, of Cambridge, using a standard model Airzone won the International DX Association's World Trophy. He logged 248 separate stations all over 2000 miles away and all on broadcast. This is incontrovertible evidence of Airzone's remarkable range and power.



● **AIRZONE MODEL 565**—5-valve A.C. electric dual wave superheterodyne. Outstanding features include: new metal valves; electric eye; metal core coils; automatic volume control; special magnavox speaker; tone control; noise suppressor; horizontal edge lit tuning dial with direct line tuning, etc., etc. One of the finest dual wave receivers ever offered for sale in this country.



● **AIRZONE MODEL 659**—6-valve dual wave mantel superheterodyne. Outstanding features include: electric eye; metal valves; metal core coils; automatic volume control; noise suppressor, etc., etc. On value alone, discerning buyers will find it difficult to go past this splendid little set which gives a performance equal to, if not better than, much larger models.



● **AIRZONE MODEL 554**—5-valve mantel Type A.C. electric superheterodyne. This smart model has a special large 8in. dynamic speaker, giving outstanding reproduction; a new 8in. simple action dial calibrated in kilocycles, gives easy, accurate tuning; metal core coils give increased efficiency and great selectivity; metal and glass valves. A really smart performer at reasonable price.