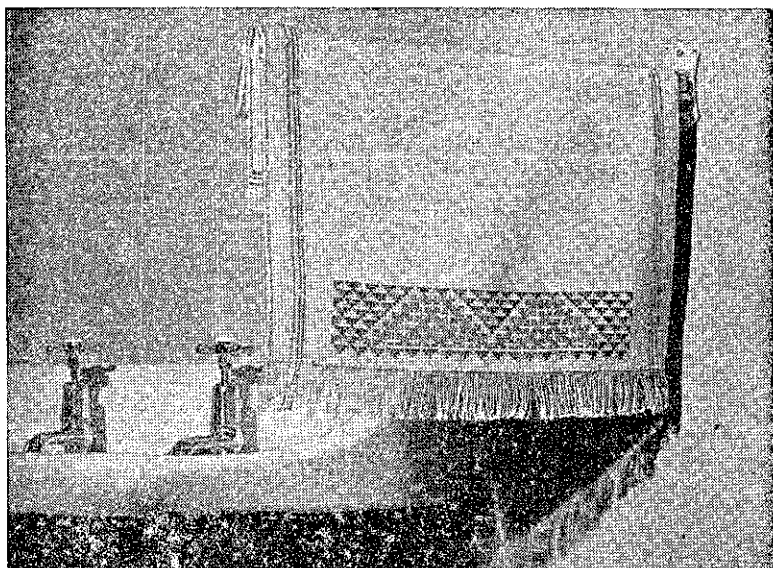
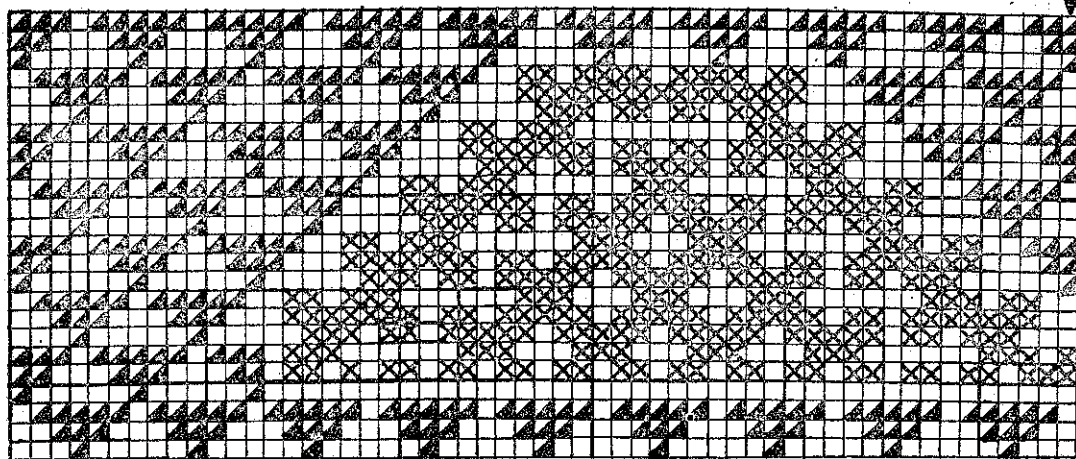


An Up-to-the-Minute Guest TOWEL - -

is attractive
embroidered
with Cross
Stitch - -



649 = \blacktriangle 700 = \times CENTRE \rightarrow



THE embroidery which is illustrated here can be easily followed in the black and white drawing, and the finished article is certainly worth the work put into it. Small jobs such as the making of this guest towel are just the thing these cold, wintry days. An evening or two spent each week before the fireside with your friends crocheting, knitting or working designs on pieces of linen would soon make a difference to the appearance of your home which, of course, you like to be as modern and fashionable as possible. Guest towels, chairbacks and table centres, such as have appeared on this page from time to time in the "Radio Record" would make, too, very acceptable presents for birthdays and weddings. And being hand-worked they are ever so much more valued, and their usefulness in the house is not the least of their points.

Turn over a narrow hem down the sides and along the top of the piece of linen and over it work 3 button stitches into the same place, but placing the 1st and

3rd stitch on the slant so that the group forms a peak. Leave a space of 1-5in. between each group and work it with F.721. At the bottom draw out a thread $1\frac{1}{2}$ in. from the edge and along it continue the group of button stitches. Find the centre of the width of the towel and $2\frac{1}{2}$ in. from the bottom commence working the pattern from the diagram. It is all worked in cross stitch—10 stitches to the inch.

Materials required: 1 skein "Anchor" Cotton a Broder No. 30s (30 metres), F.721 (white); 2 skeins each "Anchor" Cotton a Broder No. 30s (30 metres), F.619 (green), F.700 (turkey red); piece of cream linen, $15\frac{1}{2}$ in. x 27in.

When the cross stitch is completed draw out a thread $\frac{3}{4}$ in. from each side, then knot a double thread of F.700 the length of the towel to the next thread of linen, and pull it out at the opposite end until the red thread is in place.

Leave a space of 1-8in. and draw out another linen thread, knotting a green double thread. Leave 2 threads and draw through another green one. Make the same border across the top of the towel with the same measurements. Fray out the bottom of the towel to the button stitch and even ends. The finished article will grace any bathroom and your guest will appreciate your industry.