

"VALUABLE CARGO" ON WANGANELLA

Gladys Moncrieff and
Gil Dech

INTERVIEW WITH PIANIST

WHEN the Wanganella left Sydney last week she had on board a valuable cargo—specially addressed to the radio listeners of New Zealand. And when that "valuable cargo" walked down the gangway at Wellington last Monday into the grey mist of a winter morning there were old friends there to bid them welcome. The louder greeting was for Gladys Moncrieff—she is so well-known over here—but no less sincere was the greeting given Gil Dech, the noted pianist and conductor.

Mr. Dech (he pronounces his name DESH), is very widely known as a recording artist and scarcely a day goes by that his records are not played from the New Zealand radio stations. On this occasion he will act as official accompanist to Miss Moncrieff who starts her New Zealand tour at Auckland on Thursday. Next week, on Thursday, July 11, Wellington people

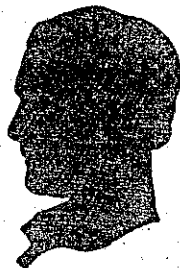


will have an opportunity of seeing him in action when an all-star celebrity concert is to be given in the Majestic Theatre.

"I left England to tour South Africa," said Mr. Dech to the "Radio Record" representative who sought him out after he left the boat, "and later went on to Australia, which I found so much to my liking that I decided to stay there indefinitely. I was appointed to the position of musical director for the Columbia Gramophone Company in Sydney, and later to the same position for Station 2GB, one of the leading commercial radio stations in Australia.

"I have played all Miss Moncrieff's accompaniments for her recordings. We did four new ones just before we left—Jack Lumsdaine's song, 'Where the River Shannon Flows'—poor old Jack is pretty sick, by the way—'Love's Young Dream,' and two songs from the new talkie, 'Naughty Marletta,' 'Ah! Sweet Mystery of Life,' and 'I'm Falling in Love.' You should hear them over here shortly."

"SHADOWS" No. 1 £25 CASH



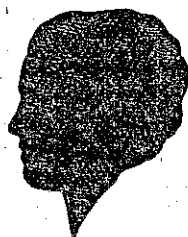
DENNIS KING



CLIVE BROOK



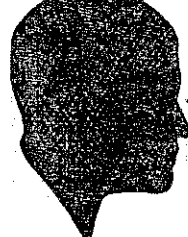
RUTH CHATTERTON



JEANETTE MACDONALD



MAURICE CHEVALIER



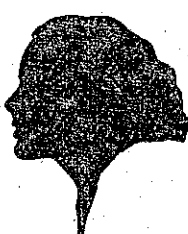
JACK OAKIE



CHARLES ROGERS



NANCY CARROLL



MARY BRIAN

AAAAAAAAABCCCCCDDDEEEEE
EEEEEGGHHHHIIIIJJKKLLLLMM
NNNNNNNOOOOORRRRRRRRRSS
TTTTTTUUVVYY

The Above Are The Key Letters.

CONDITIONS.

1. How many of the shadow stars' names above can you make using the KEY LETTERS?
When working out your solution cross out each key letter used in making a name, *for each key letter is not to be used more than once.* Both the Christian and surname must be used in each case. Do not include the name of any star more than once in your list. Shadow stars' names, above, are the only names to be used.
2. Write your list in pen or pencil, and number the names in your list, also state how many key letters were not used. Your name and address should appear at the top right hand corner of the sheet.
3. The competitor with the greatest number of names (made up from the key letters as explained above) will be awarded the CASH PRIZE of £25. In the event of two or more competitors having the same number of names, the one with the least number of key letters unused will be declared the winner. In case of a tie (the same number of names and the same number of unused key letters) the prize money will be divided.
4. A postal note for 1/- (or 1/1 in stamps) must accompany each entry.
5. All entries must be postmarked not later than TUESDAY, JULY 9th.
6. The judge's decision must be accepted as final.
7. Post your entry to:—

"SHADOWS" No. 1 PUZZLE, G.P.O. Box 290, WELLINGTON.

Results will be published in this paper on July 19th

Prize money has been lodged with "N.Z. Truth."