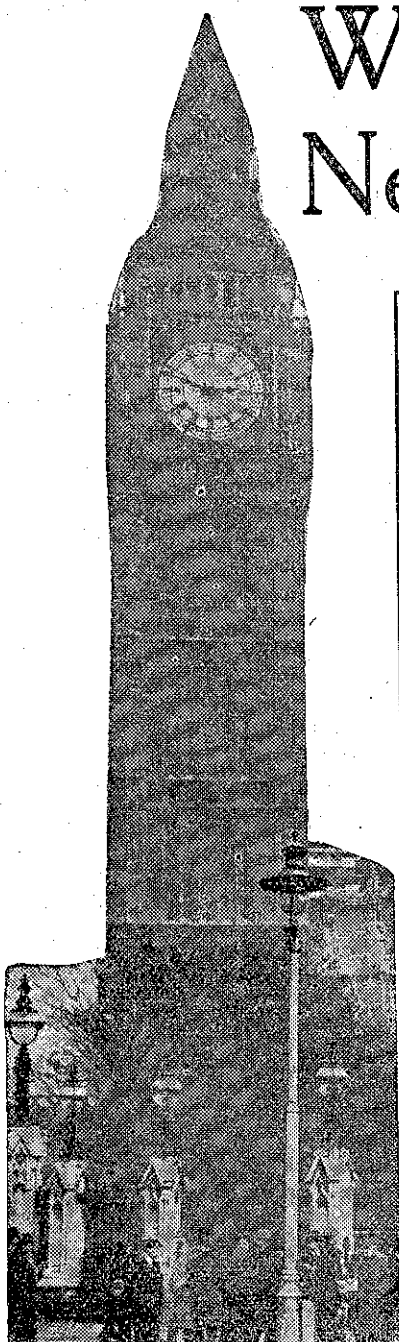
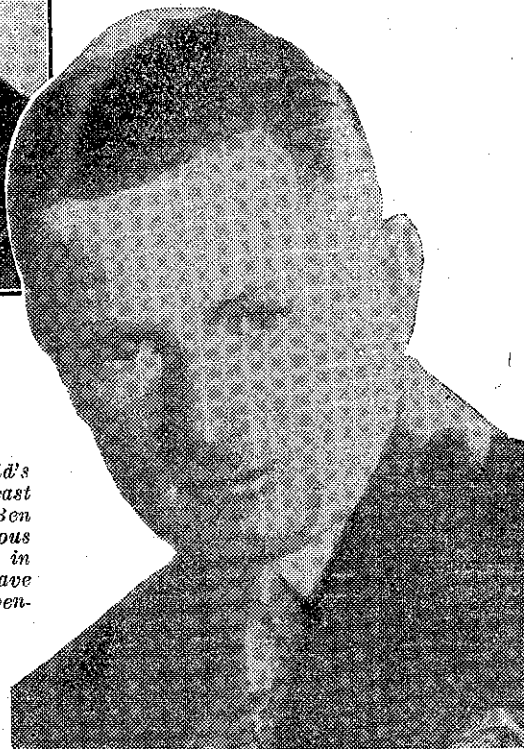


When You Listen In Next Week . . .



Mr. Harold Beck (left), conductor of the 3YA Orchestra which will be heard in a programme from the Christchurch station on Friday evening, March 8. Mr. Beck has a thorough knowledge of music, and is regarded as an authority in Christchurch musical circles.

One of the world's most popular broadcast "stars" is Big Ben (left). This famous London clock ushers in the Empire shortwave programme each evening.



Above is one of the world's most popular radio artists—the "employer" in the Japanese Houseboy broadcasts. In real life he is Mr. Reginald Sharland, and he will be remembered in New Zealand as the leading man in "The Girl Friend," the musical comedy which was played here in the late 'twenties.



The Spivokovsky-Kurtz Trio (left), which will be heard from 3LO, Melbourne, on Tuesday next. This talented trio toured New Zealand in 1933, and performed several times from the national broadcasting stations.