

# VARIATIONS in SLEEVES



4043

3962

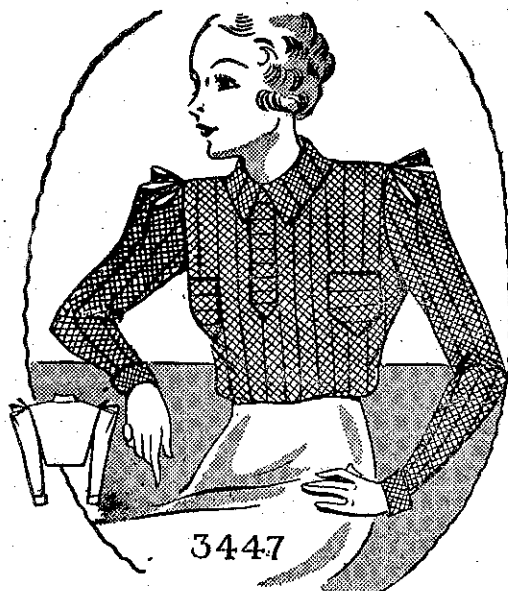
4043—Silk tunic frock, with square neck and short fancy sleeves. Material required, three and one-quarter yards of 36-inch for tunic and three and one-quarter yards of 36-inch for skirt and sleeves. To fit size 36-inch bust. Width at hem, one and five-eighth yards. Other sizes, 32, 34, 38 and 40-inch bust. PAPER PATTERN, 1/1.

3962—Attractive crepe-de-croie frock with short puff sleeves and small knife pleats forming trimming on bodice. Material required, four and a quarter yards of 36-inch and one-quarter yard 36-inch contrasting. To fit size 36-inch bust. Width at hem, one and five-eighth yard. Other sizes, 32, 34, 38 and 40-inch bust. PAPER PATTERN, 1/1.

The patterns for the garments  
featured on this page are obtainable  
from:—

PATTERN DEPARTMENT,  
N.Z. RADIO RECORD,  
G.P.O. Box 1680,  
WELLINGTON.

3447—Silk blouse with fancy sleeves. Material required, two and five-eighth yards 36-inch. To fit size 36-inch bust. Other sizes, 32, 34, 38 and 40-inch bust. PAPER PATTERN, 1/1.



3447