

of more than one of these valves in the high frequency stages successfully overcomes the selectivity problem arising from their introduction. Its use as a detector is a comparatively new innovation. By employing it as a power detector, an intermediate stage of audio frequency is rendered unnecessary. Its use in this respect is almost invariably followed by the introduction of the 245 power valve in push-pull. The number of valves employed is thus reduced to five or six, and this means less upkeep and renewal cost.

Cabinet Design.

THE cabinets are of two types, high-boy and low-boy, and are almost invariably finished in light oak. They are usually provided with three buried oak knobs which control the volume and balancing arrangements. In some cases the number of controls has been reduced to two, and in one case only one control is provided. The typical cabinet is fitted with two doors which close over the controls and speaker when the set is not in use, and the beauty and simplicity of these receivers can be realised only by those who have visited any of the recent exhibitions. The rapidly-gaining popularity of radio in New Zealand must be attributed to trouble-free all-electric receivers and handsome console cabinets.

These consoles, though obtainable in most cases through an easy system of time-payment, are beyond the means of many would-be listeners. This latter class have been catered for, however, by several firms, who have marketed a complete line of receivers, which, although not of the console type, are very acceptable in both performance and design.

New Zealand Manufactured Receivers.

IN several instances these are manufactured or assembled in this country, and it is interesting to observe just how much production is carried on in this direction in New Zealand. One firm, who made a distinctive line of battery and electric sets, was exhibiting several of their products in the course of assembly. These receivers showed the design and composition of the power-pack, the construction of the tuning coils, and the position of components and wiring. Many amateurs taking advantage of the absence at this stage of construction of the view-obstructing shields, carefully examined these exhibits to secure hints which would aid them in the construction of their own sets.

Another exhibit of locally-manufactured receivers of all types called for much praise. These have been specially designed to suit local conditions, and the New Zealand woods used in the production of the cabinets presented a pleasing change from the orthodox importations. There was one exhibit of a screen-grid all-wave set, which was designed and manufactured by a New Zealand radio engineer. This handsome little receiver, assembled neatly in a ducoed cabinet, struck an original note among the conventional types of sets on display. These and the other smaller sets previously referred to were the subject of considerable interest, and it is likely that their introduction to the exhibition will do much to stimulate radio among those who desire a small but powerful receiver.

The Home Constructor.

PRIOR to the exhibition the opinion was current that the numbers of home constructors in New Zealand was fast diminishing, but this assumption has now proved to be incorrect. Great interest was manifested by the public in the very complete range of radio components and accessories exhibited. Besides these displays there were two exhibits, on behalf of the two radio papers, of home-constructed receivers, and judging by the numbers that visited these stands and discussed the models on exhibition, there is still much activity in the hobby of home-construction.

The set around which the most interest was centred was the two-stage radio-frequency Browning-Drake. There were fortunately two exhibits of this receiver in these stands, one being the prize-winner in the competition organised by the committee, and the other, an exhibit by an Auckland constructor. The A.C. home-constructed apparatus called forth favourable comment, and many of the visitors expressed their intention of building a similar model. Another exhibit that was a centre of attraction was a home-made dynamic-cone loudspeaker.

Modern Loudspeakers.

ALTHOUGH the moving-coil speaker has proved immensely popular, the magnetic cone type has not yet been wholly displaced. In the majority of the stands could be seen models of this type, and its performance and appearance have been so improved that it is now a most desirable piece of apparatus.

The dynamic type of speaker, however, predominated, and some of the Cabinets which housed these modern speakers were almost mistakable for complete receivers. Their chief attractiveness lay in their simplicity of appearance, and this, in fact, is the dominating factor in all modern radio equipment.

The Exhibition Broadcast.

THE stage of the Town Hall was elaborately fitted up as a temporary studio, with drapings of blue and grey, armchairs, shaded lights, and the essential microphone. The studio was occupied in turn by the broadcasting choir, under the baton of Mr. Len Barnes, the Auckland Artillery Band, and by individual artists who took their turns before the magic microphone.

An interested crowd in the galleries keenly followed each item, and thoroughly enjoyed the excellent concerts which were provided each night. At intervals the broadcasting was undertaken direct from 1YA, and during these periods the sets on various stalls were tuned in so that visitors might walk round and compare respective qualities of reproduction.

The children's session was much appreciated by young and old, and the kiddies especially were delighted to watch Uncle Tom as he broadcast birthday greetings. Everyone was intensely interested to see the personalities of the children's hour, and the opinion was universally expressed that the Uncles and Aunties were as delightful in person as they are over the air.

Amateur Transmitters.

RECENT years have seen a growing tendency to use the higher frequencies, both for telephony and tele-

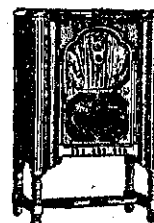
(Concluded on page 29.)

dominant!

MAJESTIC RADIO DOMINATES! In performance—appearance—modernity it soars alone. In moderation of price it has established new standards. Call in at "The Box Office" in Queen Street, Auckland, or at any Majestic Agent. Note how Majestic dominates the air—how clear and perfect is its tone: absolutely free from hum or A.C. buzz—how simple is the single dial control. Compare its performance with any radio at any price—observe its sumptuous appearance. Then you will realise the reason of **MAJESTIC Dominance.**

These MAJESTIC Agents will gladly demonstrate Majestic Dominance!

Radio House, Victoria St.,
Whakatane.
Messrs. Francis Bros.,
Hamilton.
Mr. Ced. Knight, Hinemoa
Street, Rotorua.
Mr. S. Pearson Radio
Dealer, Waihou.
D. McL. Wallace, Te
Aroha.
Mr. J. A. Malcolm, Huntly.



Model 91

PRICE £58

Terms: £8 Deposit; £3 per Month.

Free Demonstration in your Home

We will gladly arrange to demonstrate Majestic dominance in your own home; send the coupon below or get in touch with the nearest Majestic Agent.

Majestic

All-Electric RADIO

Lewis Eady LIMITED

"The Box Office"

QUEEN STREET - AUCKLAND

And also 15 Karangahape Road, Auckland.

Victoria Street, Hamilton.

LEWIS EADY, LTD.,
"The Box Office," Queen Street, AUCKLAND.
I shall be glad if you will arrange to demonstrate Majestic Dominance in my home.
Name
Address
R.R.1