

smaller pieces. His immense industry was in keeping with a great strength of character which enabled him to endure severe privations in early life. Most people would have been crushed by the handicaps which he, as a young man, had to face. However, he eventually achieved real distinction both as a composer and as a teacher. The 3YA Broadcasting Trio will play Raff's "Cavatina" on Monday, July 22.

Grave and Gay.

BRAHMS' Op. 1 (published in 1853, when he was twenty) was a work for the piano. He began his career as a pianist, and during his early years of composition he tackled the Piano Sonata form several times. He next wrote some half-dozen sets of variations. Then for about a dozen years he almost entirely ceased to write for the pianoforte alone, his next piano work being a set of eight pieces, four entitled "Capriccio" and four "Intermezzo." The "Intermezzo in B flat minor" makes expressive use of harp-like motifs; the whole in a spirit of tender reflection, in a mood almost of melancholy. The "Capriccio in B minor" is in lighter mood, suggestive of gay dance rhythms, the background for a ballet of care-free sprites.

Miss Dorothy Davies will play the "Intermezzo" and "Capriccio" at 3YA on Thursday, July 25.

A Tell-tale Spirit.

THE story of Edward German's opera "Merrie England" is laid in the glorious days of Queen Elizabeth. The story is simple. Walter Raleigh is in love with Bessie Throckmorton, Maid of Honour to the Queen. He has given her an acrostic which she has lost, and which has been found by the witch Jill-all-alone. It is given to the Queen, who thinks it is for her and is quite pleased. On discovering that it is not, she orders the lovers to be banished, and the witch to be burned. The Earl of Essex accompanies the Queen on a trip through Windsor Forest, and causes the apparition of Herne the Hunter to appear, tradition having it that the ghost appears only when the monarch meditates a wrong. The Queen relents and all are pardoned.

Miss Valda McCurdy will sing the "Waltz Song" from "Merrie England," and Mr. H. Drew will sing "The Yeomen of England" from the same opera at 4YA on Tuesday, July 23.

"Crossley" Radio Station

THE following paragraph from an American trade magazine is of more than passing interest:—L. B. Scott, Ltd., Crosley Distributor in Christchurch, New Zealand, has sent us this clipping from the "Radio Record," leading Radio Journal in New Zealand. It is only further proof of the great work that WLW is doing in the world: "Receiving sets, one of which was supplied through the generosity of several Aucklanders, are a great boon to the leper colony which inhabit that little Fijian island Moko-gai. There the patients have been hearing with splendid clarity the big 50 kilowatt station WLW, operated from Cincinnati.

For Sale or Exchange.

See page 40 for column of casual advertisements.

Incomparable Beauty *plus* Unequalled Performance

STEINITE

All-Electric RADIO RECEIVERS

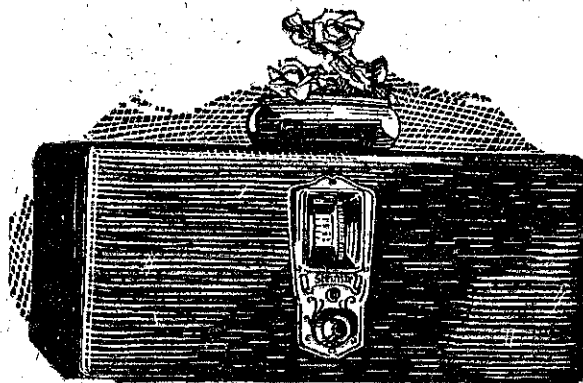


TABLE MODEL

TABLE MODEL (above). A seven-valve A.C. (including Rectifier) Electric Set Receiver which was sold by thousands of American dealers last year. This is the famous Steinite Radio. It is an amazingly compact, yet marvellously efficient receiver in a cabinet of Tanguile, finest of Philippine woods, finished in Duco. It is the greatest value in radio. Retail price, complete with valves:—

Centres	£29
Inland	£30

MODEL 40 (at right).—Eight valves. A.C. Electric Receiver (including rectifier), two 171A power valves in push-pull amplification. Completely outclasses anything in the lower-priced market, compares more than favourably with all high-priced radio sets. In a full-sized hi-boy cabinet with hand-rubbed finish. Built-in and super-electric-dynamic loudspeaker reproduces the entire musical and vocal range with startling fidelity. Retail price, complete with valves:—

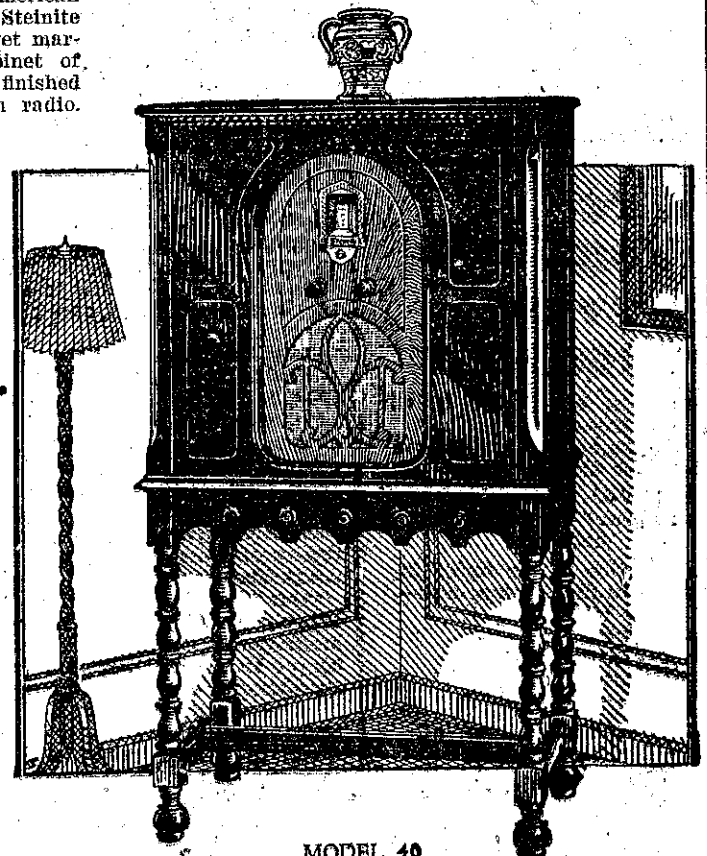
Centres	£52/5/-
Inland	£53/10/-

Ask your dealer to demonstrate these models to you, or write for fully illustrated literature to
N.Z. Master Agents:

RADIO Ltd.

Commerce Building, Anzac Avenue,
AUCKLAND.

Such is the Steinite All-Electric; and you will marvel also at its beauty and performance. It will thrill you from the time the switch is turned on until the last note has died away. Its beauty will delight you. Every little detail has been carefully planned out so as to give Steinite cabinets a charm which cannot fail to please. Compare Steinite with any other All-Electric Receiver on the market. What other set can compare for beauty and performance, or offer such remarkable value for such a moderate price?



MODEL 40