

"STEINITE" Leads—in Radio Value—Appearance—Performance

Compare these Super All-Electric Sets with any other receivers on the market. What other set can compare with the "Steinite" Walnut Console Cabinet for beauty—can compare with "Steinite" performance?—And when you think of the price, what other set offers such remarkable value?

TABLE MODEL (below). A seven-valve A.C. Electric Set Receiver which was sold by thousands of dealers last year, (including Rectifier). This is the famous Steinite Radio. It is an amazingly compact, yet marvellously efficient receiver in a cabinet of Tanguile, finest of Philippine woods, finished in Duco. It is the greatest value in radio. Retail price, complete with valves:—

Centres	£29
Inland	£30



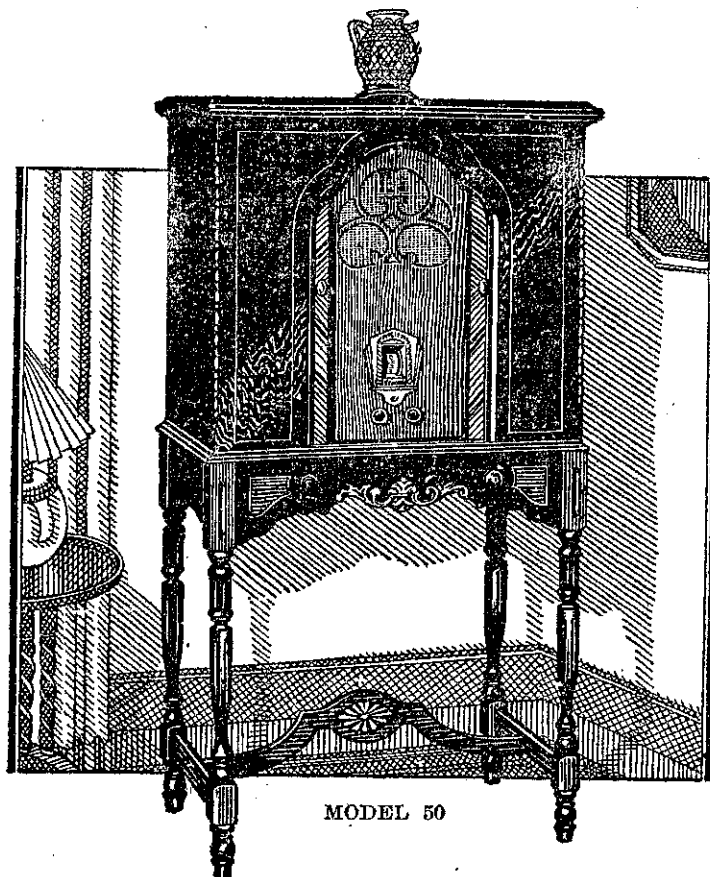
TABLE MODEL

OUTSTANDING OPPORTUNITY FOR "LIVE" DEALERS

The wonderful value offered by these wonderful "Steinite" Radio Receivers, and their overwhelming superiority over all other types of sets, will build up a tremendous demand all over New Zealand. Certain unallotted territory is still available. Write AT ONCE to the New Zealand Master Agents:

RADIO LIMITED

COMMERCE BLDG., ANZAC AVE., AUCKLAND



MODEL 50

MODEL 50 (above). Nine-valve A.C. Electric Set (including Rectifier). Two 250 Power Valves in Push-Pull Amplification. The extent to which Steinite has revised all previous ideas of radio value is shown in this superb Model 50, using the sensational new 250 power valve in push-pull amplification. With this amazing receiver, Steinite has coupled a Super-Electro-Dynamic Speaker in a hi-boy cabinet of startling beauty, with sliding doors of Oriental diamond matched walnut. Giant power and glorious tone have been brought to the moderate-priced field by Steinite engineers, who have made the 250 valve yield its utmost in the Model 50. Retail price, complete with valves:—

Centres	£73/5	Inland	£75
---------------	-------	--------------	-----

The New—

"STEINITE"

RADIO RECEIVERS

"ALL-ELECTRIC"