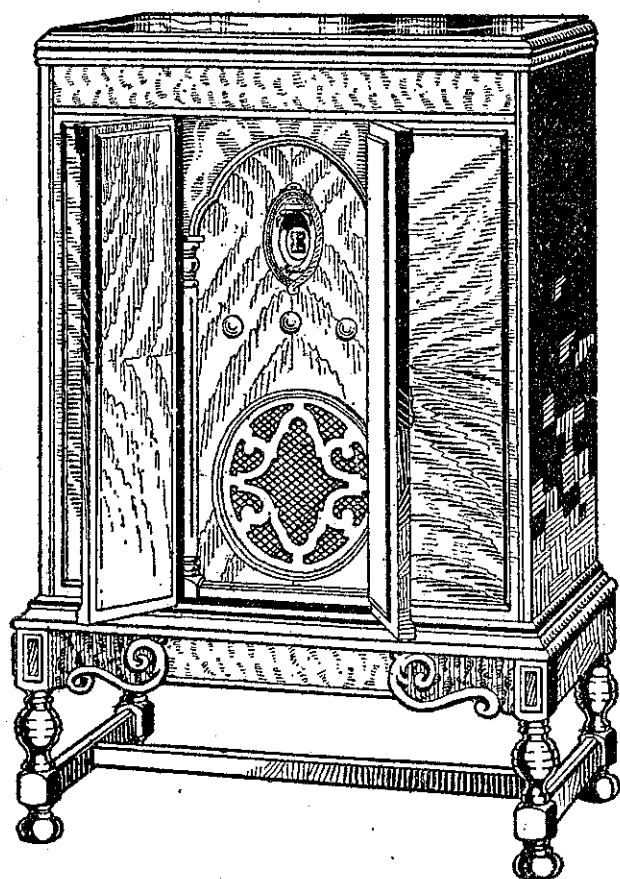


MAJESTIC

ALL-ELECTRIC Receivers

The Radio Sensation of the Year



Majestic Combination Radio and Gramophone.

Model 81, Main Ports	£95
Complete with Valves, Inland and Out-ports	£97/10/-
Model 71—Console Radio Receiver—7 valves and rectifier—in burl walnut cabinet. Complete with valves.	
Main Ports	£48
Inland and Outports	£50

*a SUPER RADIO Receiver
at a Price that offers....
....Incomparable Value!*

Note these features of outstanding MERIT

The Cabinet. Examine any one of these Wonderful Receivers and you will be delighted with the Superb Cabinet in which it is encased—an outstanding example of the Cabinetmaker's craft—designed on graceful lines and carefully executed in matched burl-walnut. It does justice to the wonderful Receiver which it contains.

The Chassis. Examine the Chassis. Your Majestic Distributor will welcome your attention—and note the solid construction of every detail. Here is no shoddy material or workmanship—every little detail is sound in design, construction, and assembly. A Super Set to give years of useful life and characteristic of Majestic production.

The Power Pack will bear just the same critical examination. Note the robust proportions of this part. Nothing cramped or undersized to economise in space or manufacturing costs, but a real **High Efficiency Power Pack**, designed by experts with years of experience. The Majestic Power Pack is indeed a Super Power Unit in which every component part is capable of handling far more than its normal load. Consequently it has a high factor of safety and will give long and efficient service.

The Speaker, too, is of the same high quality. A Dynamic (moving coil) Speaker of super excellence—it possesses all the sturdy merits which characterise Majestic construction. As for quality of tone, well, let it speak for itself—you will be delighted.

There is a Majestic Distributor in your district—call and inspect these wonderful instruments, and you will appreciate how good a really good Radio Receiver can be.

Dealers should communicate with the territorial distributors re sub-agency propositions. If any difficulty is experienced in getting in touch with a Majestic Distributor, write direct to—

The New Zealand Representatives:—

SPEDDING LTD.

P.O. Box 462, Auckland

P.O. Box 1581, Wellington

P.O. Box 922, Christchurch

P.O. Box 516, Dunedin.