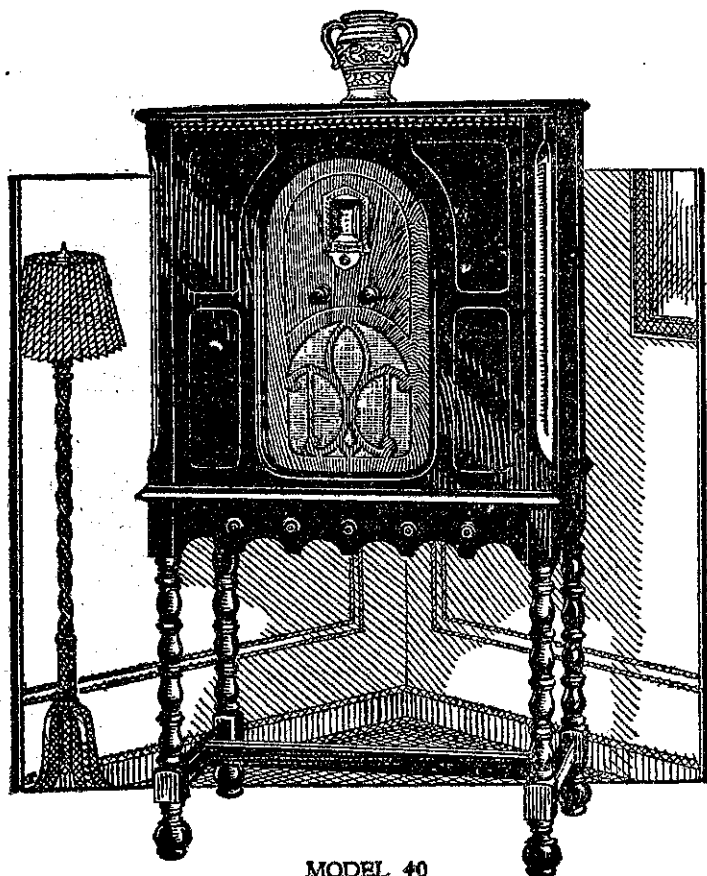


"STEINITE"--offering a new



MODEL 40

TABLE MODEL (right).—A seven-valve A.C. Electric Set (including rectifier). This is the famous Steinite Radio Receiver which was sold by thousands of dealers last year. It is an amazingly compact, yet marvellously efficient receiver in a cabinet of Tanguile, finest of Philippine woods, finished in Duco. It is the greatest value in radio. Retail price, complete with valves.

Centres £29

Inland £30

THE makers of America's first electric Radio offer a line of receiving sets which are the leaders of the season. Steinite engineers, working with the tremendous facilities of the huge Steinite organisation, have produced a line of Radio-Receivers of unexcelled scientific construction and quality. Steinite furniture designers have given these fine receivers glorious cabinets of new style and beauty, ornaments to any home. And the resourcefulness of Steinite management has made it possible to produce and offer these marvellous sets at sensationally low prices.

All Steinite models have single-dial control.

A pin-jack adjustment on the power-pack allows adjustment of the set to various line voltages from 190 to 240 volts, thus insuring protection for the A.C. valves.

Steinite Table model is provided with pin-jack connections for electric phonograph pick-up, without disturbance of the detector valve. The heavy audio-transformers used, give the utmost in radio broadcast reception, or in reproducing phonograph records.

All Steinite console models are built of selected walnut and have hand-rubbed finish, new type electro-dynamic loudspeakers built-in, with unsurpassed tone reproduction.

MODEL 40 (at left).—8 valves, A.C. electric receiver, (including rectifier), two 171A power valves in push-pull amplification. Steinite Model 40 not only completely outclasses anything in the lower-priced market, but compares more than favourably with all high-priced radio sets. It is a receiver of new power and new beauty of tone, in a full-sized hi-boy cabinet with hand-rubbed finish. The built-in and super-electric-dynamic loudspeaker reproduces the entire musical and vocal range with startling fidelity; there is an inspiring reality to its tone. Retail price, complete with valves

Centres £52/5/-

Inland £53/10/-



TABLE MODEL

OUTSTANDING OPPORTUNITY FOR "LIVE" DEALERS!

The wonderful value offered by these wonderful "Steinite" Radio Receivers, and their overwhelming superiority over all other types of sets, will build up a tremendous demand all over New Zealand. Stockists are required for every town in New Zealand. Write AT ONCE to the New Zealand

MASTER AGENTS:

RADIO LTD.

Commerce Building

Anzac Avenue, Auckland