

Week - All Stations - to Oct. 30

—Copyright—

These programmes are copyright, but individual daily programmes may be published on day of performance.

- 4.15: Lecturette—Dr. L. A. Line, "First Aid."
4.30: Gramophone recital and relay of Manuel Hyman's Exhibition Band from the Adelphi Cabaret.
4.59: Sporting results to hand.
5.0: Close down.
6.0: Children's session—Uncle Jasper and party.
7.0: News session and market reports.
7.35: Lecturette—Mr. E. A. Bradshaw, "A Short History of Petroleum."
8.0: Chimes of the General Post Office clock, Wellington.
8.1: Opening speech, by His Worship the Mayor.
8.6: Speech by the Right Hon. J. G. Coates, P.C.
8.16: Description of scene depicting Maori life before the arrival of the pakeha, followed by a description of a scene depicting arrival of first white settlers in New Zealand.
8.25: Description of a parade of mannequins, representing the following firms—Wellington Woollen Co., Ltd., Macky, Logan, and Caldwell, Ltd., Whitehead and Pears, Bond's Hosiery, New Zealand Hosiery, A. Tossman and Co., Ltd., A. Cathie and Co., Ltd., St. Crispin Shoe Co. Bond's Hosiery, A. Tossman and Co., and New Zealand Hosiery will also provide ballets, which will be described.
Suitable music for the parade and ballets will be rendered by an orchestra, under the conductorship of Mr. Frank Thomas.
9.5: Selections by orchestra, under conductorship of Mr. Frank Thomas. Studio concert.
9.15: Lecturette—Mr. Douglas Taylor.
9.30: Soprano solo—Miss Myra Sawyer, "Waltz Song" ("Tom Jones"), German (Chappell and Co.).
9.34: Instrumental—Studio Orchestra, selected.
9.40: Bass solo—Mr. W. Boardman, "When the King Went Forth to War," Koenman (J. and W. Chester).
9.44: Vocal duet—Miss Myra Sawyer and Mr. W. Boardman, "The Syren and Friar," Emanuel (Barley and Ferguson).
9.48: Instrumental—Studio Orchestra, selected.
9.54: Soprano solo—Miss Myra Sawyer, "Spring's Awakening," Sanderson (Boosey).
9.58: Bass solo—Mr. W. Boardman, "Ho, Jolly Jenkins" from "Ivanhoe," Sullivan (Chappell).
10.2: Instrumental—Studio Orchestra, selected.

3YA CHRISTCHURCH—SILENT.

4YA DUNEDIN (463 METRES)—TUESDAY, OCTOBER 25.

- 3 p.m.: Town Hall chimes.
3.1: His Master's Voice recital.
3.30: Social notes and news.
3.40: Studio music.
4.0: Book talk, by Mr. H. Greenwood, of the Athenaeum.
4.15: His Master's Voice recital.
4.30: Close down.
7.0: Town Hall chimes.
7.1: Children's session—Big Brother Bill.
7.45: Address by Sir George Fenwick, "Animal Welfare Week."
8.0: Town Hall chimes.
8.1: Orchestral items, under the baton of Mr. L. D. Austin, relayed from the Octagon Theatre.
8.10: Vocal solo—Mr. Les. Dalley, "Your Tiny Hand is Frozen" from "La Boheme," Puccini.
8.14: Pianoforte solo—Miss Mollie Andrews, "Liebeslied," Liszt.
8.19: Soprano solos—Miss Mollie Andrews, (a) "Waltz Song" from "Tom Jones," German; (b) "All Through the Night," Somerville.
8.24: Cello solo—Mr. Phil Palmer, "Serenade," Piere.
8.28: Baritone solos—Mr. Arthur Lungley, (a) "The Sword of Ferrara"; (b) "Obstination," Massenet.
8.34: Orchestral items from the Octagon Theatre.
8.45: Address—Pastor W. D. More, "People Who Ought to be Dead."
9.0: Mezzo-soprano solos—Madame Marjorie Cadman, (a) and (b) selected.
9.7: Pianoforte solo—Miss H. Wilson, "Au Printemps," Greig.
9.12: Vocal solos—Mr. Arthur Lungley, (a) "My Friend"; (b) "Youth," Allitsen.
9.18: Cello solo—Mr. Phil Palmer, "Minuet," Becker.
9.22: Soprano solos—Miss Mollie Andrews, (a) "Golden Dancing Days," Clarke; (b) "We'd Better Bide a Wee."
9.28: Pianoforte solo—Miss Helen Wilson, "Polonaise," Chopin.
9.33: Tenor solos—Mr. Les Dalley, (a) "Silent Noon," Vaughan Williams; (b) "I Know of Two Bright Eyes," Clutsam.
9.40: Cello solo—Mr. Phil Palmer, "Mazurka," Squire.
9.44: Mezzo-soprano solos—Madame Marjorie Cadman, (a) and (b) selected.
9.50: Orchestral items from the Octagon Theatre.
10.0: Close down.

Wednesday, October 26th

1YA AUCKLAND (333 METRES)—WEDNESDAY, OCTOBER 26.

- 3 to 4.30 p.m.: Afternoon session—Selected studio items.
7.15: News and reports.

- 7.30 to 7.45: Talk on "Physical Culture," by Mr. Norman Kerr.
8.0: Chimes.
8.1: Relay of orchestral overture from Strand Theatre—Eve Bentley conducting.
8.9: Quartet—St. Andrew's Quartet, "Come to the Show," Oliver (Larway).
8.14: Cello solo—Miss W. Moore, "Harlequinade," Squire.
8.18: Soprano solo—Miss Adelaide Taylor, "A Woodland Madrigal," Wilson.
8.22: Trio—Miss Taylor and Messrs. Peter and Colledge, "Shall a Clown?" Bennett (Novello).
8.27: Piano solos—Mr. Geoffrey Colledge, (a) "Csikos et Bohemeune," Bohm (Lengnick); (b) "Frühlingslied," Merkel (Paxton).
8.35: Bass solo—Mr. Arthur Colledge, "Honour and Arms," Handel (Novello).
8.40: Elocutionary—Miss Gladys Gammon, selected.
8.45: Relay of musical interlude from Strand Theatre.
8.54: Quartet—St. Andrew's Quartet, "Evening and Morning."
9.0: Weather report.
9.1: Tenor solo—Mr. Robert Peter, "Beloved, It Is Morn."
9.6: Cello solo—Miss W. Moore, "Serenade," Toselli.
9.10: Soprano solo—Miss A. Taylor, "Thoughts Have Wings," Lehmann (Boosey).
9.15: Quartet—St. Andrew's Quartet, "Wake With a Smile, O Month of May," Bennett (Novello).
9.21: Elocution—Miss G. Gammon, selected.
9.26: Contralto solo—Miss Phyllis Gribben, "O, Love from Thy Power," Saint Saens (Durand).
9.32: Relay of musical entr'acte from Strand Theatre.
9.42: Duet—Messrs. Peter and Colledge, "Army and Navy," Cooke.
9.48: Piano solo—Mr. G. Colledge, "Wanderstunden," Heller (Paxton).
9.53: Quartet—St. Andrew's Quartet, "A Roundelay," Oliver (Larway).
9.59: A thought.
10.0: Close down.

2YA WELLINGTON—SILENT.

3YA CHRISTCHURCH (306 METRES)—WEDNESDAY, OCTOBER 26.

- 3 p.m.: Afternoon concert session.
6.0: Children's session, by Uncle Sam.
7.15: Addington stock market reports.
7.30: News.
8.0: Chimes. Relay of orchestral selections from Grand Picture Theatre Orchestra, under conductorship of Mrs. Black.
8.15: Tenor solo—Mr. Gregory Russell, "An African Love Song," Nevin.
8.19: Contralto solo—Miss Mildred Russell, L.A.B., A.T.C.L., "A Litany," Hurlstone.
8.23: Humorous lecture—Mr. Alec Dey, "Mary Had a Little Lamb," Chevalier.
8.27: Cello solos—Mr. Harold Beck, (a) "Barcarolle," Sitt (b) "Hungarian Folk Melody," traditional.
8.33: Tenor solo—Mr. Gregory Russell, "Pleading," Elgar.
8.36: Contralto solo—Miss Mildred Russell, "Thou Art Risen, My Beloved," Taylor.
8.40: Instrumental trio—Christchurch Broadcasting Trio, "Adagio and Allegretto, Scherzando" from "Trio, Opus 181," Gurlett.
8.48: Australian poem in lingo—Mr. Alec Dey, "The Play" in "Sentimental Bloke," Dennis.
8.54: Cello solos—Mr. Harold Beck, (a) "Old French Dance," Marias; (b) "Minuetto," Becker.
9.0: Relay from Grand Picture Theatre.
9.15: Talk—Mr. Leo Hayward, "World's Tourist Fishermen I Have Met in New Zealand."
9.35: Tenor solos—Mr. Gregory Russell, (a) "Where the Abana Flows," Finden; (b) "Allah! Be With Us," from song cycle, "A Lover in Damascus."
9.40: Instrumental trio—Christchurch Broadcasting Trio, "March" and "Habenera" from opera "Carmen," Bizet.
9.47: Contralto solo—Miss Mildred Russell, "Yesterday and To-day," Spross.
9.51: Vocal duet—Miss Mildred and Mr. Gregory Russell, "Somewhere a Voice is Calling," Tate.
9.54: Instrumental trio—Christchurch Broadcasting Trio, (a) "The Red Sarafan," Verlamov; (b) "Fascination Waltz," Bush.
God Save the King. Close down.

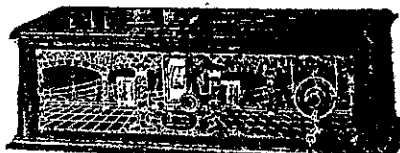
4YA DUNEDIN—SILENT.

Thursday, October 27th

1YA AUCKLAND (333 METRES)—THURSDAY, OCTOBER 27.

- 3 to 4.30 p.m.: Afternoon session—Selected studio items.
7.15 to 7.45: News and reports.
8.0: Chimes.
8.1: Relay of orchestral overture from Rialto Theatre. Henry C. Engel, conductor.
8.9: Contralto solos—Miss Nellie Lingard, (a) "Soul of Mine," Barnes (Chappell); (b) "Dry Those Tears," Del Reigo (Chappell).
8.17: Piano solo—Mrs. Hugh Morton, "Fox Trot Medley."
8.22: Baritone solos—Mr. Walter Brough, (a) "Inter Nos"; (b) "Border Ballad," Cowen.
8.31: Violin solo—Mr. Powell Rogers, "Liebestraume," Liszt.

Metrodyne 7 Tube Set Single Dial Radio



MODEL 75 (as illus.) £30
Complete from £41

Six-tube Three-dial Set £19
Complete from £30

Beautifully made and finished.
Compare results before you buy.
Write now for Catalogue and name of nearest agent.

AGENTS—Your territory may be open.

N.Z. Agents:
ROYDS MOTORS LTD.
211 Cashel St., CHRISTCHURCH

RADIO LITERATURE

English, American, Australian and New Zealand stocks by every mail.
Inspect our special wireless department.
We lead—others well distanced.
TE ARO BOOK DEPOT
Gas. Co's Buildings,
Courtenay Place, Wellington.

Engineers of a South Carolina traction company have discovered that it is possible to detect mechanical defects, such as flat wheels, poor motors, etc., of street cars by erecting a radio antenna alongside trolley wires, and listening-in with an ordinary receiver. It is said the idea was conceived when listeners complained of interference in their sets caused by passing cars.

An indoor "loop" or "frame" aerial should not be used with a neutrodyne set, but for any other circuit it is quite practicable. A square loop aerial for all-round broadcast reception can be made as follows:—Length of each side, 3ft.; number of turns, 8; spacing between wires, 4in.

Wire for an indoor "loop" aerial may be from 22 to 14 gauge. When the wire is wound tightly there are dielectric losses which raise the resistance. When spaced several diameters apart it is immaterial whether the wire is insulated or bare.

When used in a room the proximity of an indoor "loop" aerial to the walls or ceiling has the effect of raising the effective resistance. The difference in resistance when the "loop" is 5ft. away from the wall is 20 or 25 per cent., as compared with that when near.

If your audio-frequency valves have a tendency to howl, separate all wiring as far as possible to reduce inductive effects. Place the transformers further apart and arrange their windings at right angles if possible. Also try reversing the connections to one or more of the primary windings of the audio transformers, and also experiment with connections from the iron cores of the transformers, either to earth or to the positive of the high-tension battery.

Through permitting an accumulator (wet battery) to stand too long in a discharged condition the plates will become encrusted with sulphation, which causes trouble unless removed. This coating reduces the active surface of the plates. In some cases sulphation can be removed by giving the battery a very long charge at a low rate, after adding a pinch of Glauber's Salt to each cell. Next, empty out the acid, wash out the cells with distilled water, refill with fresh acid, and again charge the battery, this time at the normal rate.

Sediment will sometimes be seen in the bottom of wet batteries. This should be removed. Charge the battery first, wash it out with distilled water, refill with acid, and finally give the battery a short charge. Sediment in the bottom of a wet battery generally indicates that it is being charged or discharged too rapidly.

Some novices wonder how the broadcast waves get on to their aerial when it is insulated with enamel. Electromagnetic waves pass easily through all insulating substances.

The cords connecting an indoor "loop" aerial to a receiving set should not be more than 3 feet in length. The cords should be kept well apart.

A satisfactory "earth" connection for a portable receiver can be made by connecting to an insulated wire stretched on the ground, instead of to a poor or metallic ground, such as a rod driven into a wet spot.

The best test for a new valve is to put it in a regenerative receiving set or oscillator and determine whether or not it will oscillate. This is true, because a valve that will oscillate will also detect and amplify (the two other functions of a valve). This is the test often used by manufacturers and dealers. A valve that will not oscillate is practically worthless for any use but rectifying.



THIS trade mark appears on every genuine Siemens Battery. It is your guarantee of a steady flow of direct current, ensuring perfect reception.

SIEMENS

45 VOLT DRY BATTERIES

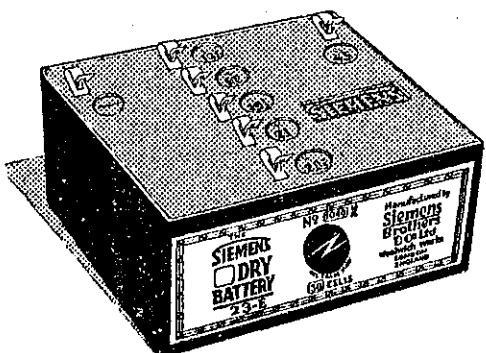
are all-British, and a necessary adjunct to good radio. The product of over 40 years of careful experimenting and research. Insist on seeing the Siemens trademark on every battery you buy.

For terms and full particulars apply to N.Z. Distributors:

CORY-WRIGHT AND SALMON
Engineers.

Dominion Farmers' Institute, Featherston Street, Wellington.

Mercantile Chambers, Customs Street East, Auckland.



SFERAVOX

THE MASTERPIECE OF CONE SPEAKERS

FAITHFUL
POWERFUL
BEAUTIFUL
DISTORTIONLESS

Produced by
SOCIETE FRANCAISE,
RADIO ELECTRIQUE,

PRICE £4/4/-

FROM ALL LEADING RADIO DEALERS.

BROWN & DUREAU LTD.

WELLINGTON

Sole Representatives for New Zealand and Australia.