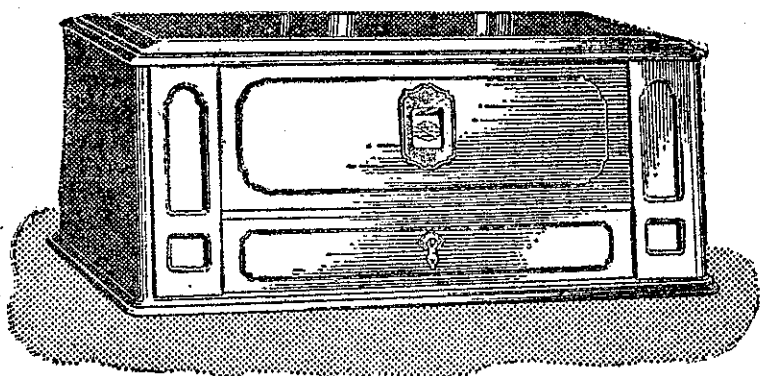




# The Outstanding 1927-1928 Broadcast Set

# "BREMER TULLY"

## New Counterphase Receiver



Twenty-seven American Stations in one evening, New York and Chicago, too—that's the wonderful record of the Bremer Tully. Have you ever heard any other set equal this performance? Again, the Bremer Tully consistently secures perfect daylight reception from Australian Stations. These feats of long distance reception, combined with the wonderful range of volume, the sensitivity and selectivity, have placed the Counterphase Eight in the position of leader of its class.

### Bremer Tully's Greatest Set---Which Means the Greatest Set of All!

The Counterphase-Eight excels in Tone, Ease in Tuning, and ability in separating stations through the use of the exclusive B-T Rejector Stage not found in any other set. Five tuned stages are controlled by a single knob. A second knob controls volume. For those desiring greater distance, auxiliary controls are provided, which overcome interference, and provide for the very maximum in results. The outstanding feature of the Counterphase is this: The longer you own it and the more you study radio, the more you will appreciate its superiority, and the greater will be your satisfaction and pride of ownership.

No radio manufacturer has ever surpassed the Bremer-Tully record for quality. In parts, circuits and receivers, every B-T product has been a continued outstanding success.

The Counterphase-Eight combines every superior feature that can be safely recommended for the highest type of radio reception.

Nothing can be gained by deferring the purchase of a good radio, and to buy a receiver without investigating the Counterphase can only bring regret,

### What Bremer Tully owners say of this Marvellous Set

Christchurch, May 20, 1927.

"The selectivity of the Bremer-Tully Counterphase-Eight was wonderful, while the rejector reduced the noise level due to the trams and statics considerably. The controls of the new machine are so simple that a child can operate. The tone and volume of the Counterphase was a revelation. I must say that you have in the Eight a machine which is a long way ahead of any machine I have yet tried. Built on sound engineering principles, the Counterphase Eight has no rival in any machine up to ten valves that I have yet seen. Thanking you again for the loan of the Bremer-Tully."—Yours faithfully—

Signed by prominent New Zealand Radio Engineer.

Christchurch, 24/5/27.

"You will be interested to hear that our last Counterphase Eight was sold to an Englishman, who has had some considerable experience in radio in England, and before purchasing our set had every first-grade set at his home and gave them a very exhaustive test. The Bremer-Tully Counterphase Eight was put side by side with a (mentions a well-known 8-valve set by name). We would locate an American station with the Counterphase, then the aerial and earth were transferred to the ———, and in every case we beat them hollow. In some cases we got a station that the ——— would not get, and in another case we would get reception twice the strength or more of the ———."

Signed by a Christchurch Radio Dealer.

Auckland, 5/1/27.

"I am pleased to say that everyone who has heard the Bremer-Tully Counterphase has quite definitely stated that the performances have been the best they have heard for quality and quantity."

*These are a few copies of numerous unsolicited testimonials we have received from satisfied owners of a Bremer-Tully Counterphase-Eight. Why not join the rapidly-swelling ranks of satisfied owners—Bremer-Tully owners? We invite you to come and hear for yourself the wonderfully consistent reproduction which has made the Counterphase-Eight so deservedly popular. Any of the following Agents will be pleased to accord you a demonstration—*

#### PRINCIPAL BREMER-TULLY DISTRICTORS:

G. W. WOOD AND CO., Winton.  
BARNETT'S RADIO SUPPLIES, Upper Octagon, Dunedin.  
G. T. GILLIES, Thames Street, Oamaru.  
BREHAUT BROS., Timaru.  
HATTON'S GARAGE, Temuka.  
J. I. SMAIL, Colombo Street, Christchurch and Greymouth.  
HILLMAN BROS., Blenheim.  
G. PAGE AND CO., Nelson.  
SUPERADIO LIMITED, Herald Buildings, Auckland.  
GILES BROS., Tuakau.  
MACK'S RADIO LIMITED, 76-77 Kent Terrace, Wellington.

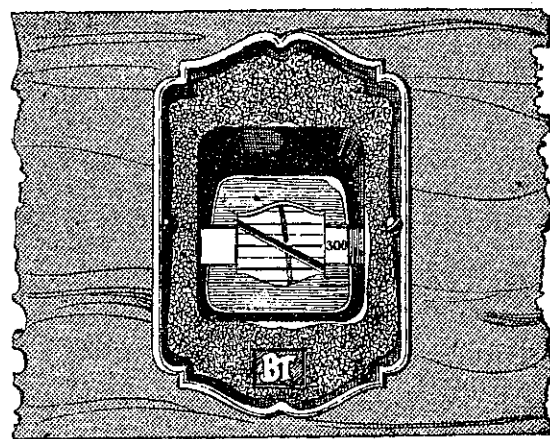
D. A. MORRISON AND CO., Wanganui, Huntville, and Patea.  
RADIO HOUSE (G. S. Anchor), Hamilton.  
W. J. SINCLAIR AND CO., Gisborne.  
L. J. GODFREY, Taumarunui.  
M. RAMSON, Whakatane.  
R. A. JAMES, Whangarei.  
WILSONS LIMITED, Kaikohe.  
GEORGE COURT AND SONS, Karangahape Road, Auckland.  
TURNBULL AND JONES, Wellesley Street, Auckland.

#### NEW ZEALAND MASTER AGENTS—

# RADIO LIMITED

WRIGHTS BUILDINGS, FORT STREET,

AUCKLAND



### Every Set Calibrated

Selecting stations is simplicity itself through the use of the exclusive patented B-T Indicator. Each set is individually calibrated at the factory and guaranteed accurate over the full scale. You simply turn to the wave-length you want.

Examine this set inside and out at any B-T Dealers, and you'll find additional features, as well as superiority in materials and workmanship that will surprise and delight you.