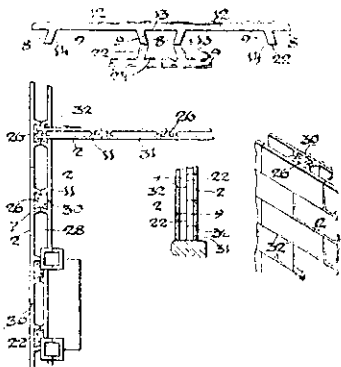


in the formation on one side of the slab of a suitable number of vertically extending locking-pieces or ribs, which are adapted to form dovetail grooves or recesses extending vertically from the upper to the lower edges of the slabs. By arranging a series of these slabs opposite each other to form the double wall of a building, and with



the outer end faces of the opposite locking-pieces abutting each other, the dovetail grooves or recesses of the two opposite series of wall-slabs are disposed directly opposite and in communication with each other, thereby forming double or opposed dovetail passages to accommodate vertical columns of corresponding shape by which the slabs are locked together in assembled position.

## Professional Directory

**W. J. Prouse and W. H. Gummer,**

A.N.Z.I.A., A.R.I.B.A., A.N.Z.I.A.

**Registered Architects.**

111 Customhouse Quay, 721 N.Z. Insurance Bldgs.,  
Wellington. Auckland.

Tel. 1547

Tel. 4304

**RICHARD O. GROSS,**

**Sculptor.**

Having extensive Studio and Workshop experience,  
carries out work in all materials.  
Architects' Details carefully executed.

21 Station Street, Newmarket,  
AUCKLAND.

Telephone 3193

**William M. Page**

**Registered Architect**

F.N.Z.I.A. LICENTIAE R.I.B.A.

Royal Exchange Buildings,  
115, Custom House Quay,  
Wellington.

Telephone 3534

**Leslie D. Coombs,**

A.R.I.B.A.,

**Architect**

Corner of Octagon & Stuart St.,  
Dunedin

## Concrete for Permanence

### WINGET FOR METHOD!

Build with WINGET Concrete Blocks—the everlasting system.

The coolest in Summer, the warmest in Winter. No upkeep costs, no painting, no insurance, no DRY ROT and no vermin.

Used by the British Government and our Allies, adopted for all great Housing Schemes, and recommended by leading Architects and Engineers.

### WINGET Products

Can be supplied in

BLOCKS

SLABS

QUOINS

GATE POSTS

PILLARS

FLUES

WALLS

PLAIN FACES

ROCK FACES

Etc., etc.

**AUBREY GUALTER & CO.**

Featherston Street.

Phone 999

## McCarthy's Family Hotel

Taupo Quay,

**WANGANUI**

C. J. MCCARTHY, PROPRIETOR

## Steel Constructional Work for Architects, Contractors, Etc.

Joists, Beams, Stanchions, Compound Girders,  
Solid Steel Columns, Steel Roof Trusses  
Galvanised Roofing Iron, Ridging, Spouting,  
— — — Downpipes, etc. — — —

**Full stocks. Quick deliveries.**

**A. & T. BURT, LTD.**

Auckland, Wellington, Christchurch, Timaru,  
Dunedin, Invercargill.

London Office: Eldon St. House, E.C.