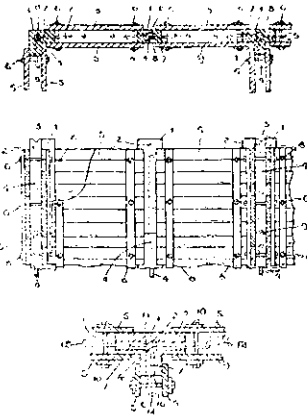


## Patents of Interest to Builders.

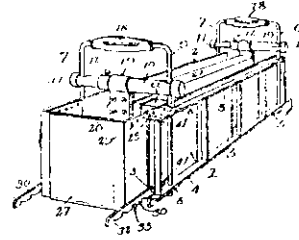
**CONCRETE BUILDING CONSTRUCTION.**—A patent, No. 45,083, has been taken out by G. A. Hayter, of Hamilton, which consists in utilising members precast in concrete, together with temporary shutters or boxing to provide the necessary moulds for forming solid walls and partitions.



The precast members which are left permanently in the walls and partitions are used at corners, intersections, and intermediately to act as spreaders for the shutters and serve to stiffen the construction until the concrete sets. The precast members are formed in sections, and special means are provided for connecting same together and also to the concrete filled between the shutters.

**CONCRETE-MOULD.**—A patent, No. 45,140, has been taken out by A. S. Greene, of U.S.A., which comprises side walls, means for holding said side walls in spaced rela-

tion, an end gate comprising a pair of members having overlapping end portions and rearwardly extending flanges pivotally connected at their upper corners with the upper



corners of said side wall, and a latch for temporarily holding the lower portion of said gate in position.

**CONCRETE BUILDING BLOCK.**—A patent, No. 42,612, has been taken out by John Morgan, of Melbourne, for a building block, the outstanding feature of which resides

## MODELS.

Architects can have true scale models prepared by

**WM. M. McLEOD,**

Balgownie,

Gonville,

Wanganui.

*The Best of Work Guaranteed.*

# GOLDEN BAY CEMENT

Universally  
Used.

Tested under every  
working condition.



Sets like a  
Rock.

Quality proved  
by results

**THE GOLDEN BAY CEMENT WORKS, LTD.**

Nathan's Buildings, Wellington.

**REESE BROS.**

**CANTERBURY AGENTS**