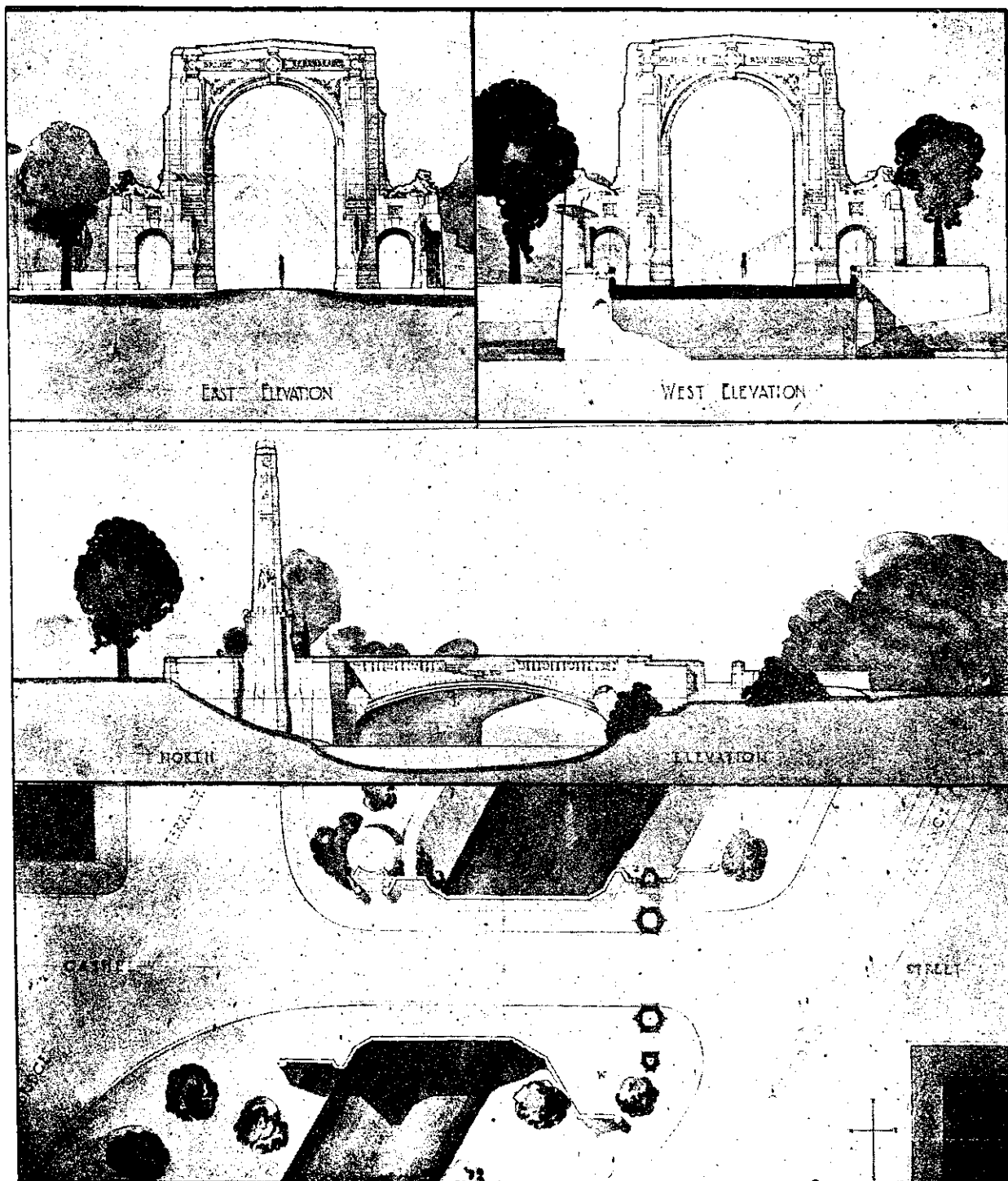


ELECTRIC LIGHTING.

The author is of the opinion that in the main the effective lighting of this bridge and its approaches might, considering the limited sums allowed for this scheme, be a matter for the City Council to undertake. The length of the bridge is such that if the approaches were properly lighted nothing more would be required. For purposes of

emphasis by night, however, this design allows for a bronze electric fitting, specially designed, fixed almost flush in the crown of the soffit of the overhead arch. This fitting would flood the roadway through the arch with light. This design also allows for one bronze wall-light on each side of the minor archway at the north-east end of the bridge (see drawings).



Elevations and Plan of winning design, by Messrs. Prouse & Gummer, of Wellington and Auckland, in the Christchurch War Memorial Bridge Competition.