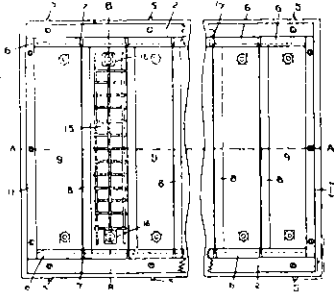


is divided by rails at each side and cross-partitions between the rails. The edges, which will be horizontal when the slabs are used vertically, are formed by the cross-partitions, which are shaped accordingly. Prefer-



ably inter-engaging, the fact that the meeting edges are formed on each side of the same partition ensuring fit in use, and room for grouting being placed between the edges. The vertical edges are formed by contact with the sides of sections on the inner sides of rails. The partitions are formed preferably by bending, etc., the metal plates which form the bottoms of the moulds. Core prints and means for holding same in place are provided, whereby holes can be formed and reinforcements held. The concrete is screeded level with the top of the rails, and compressed by a heavy roller running along the latter.

## Professional Directory

**W. J. Prouse and W. H. Gummer,**

A.N.Z.I.A., A.R.I.B.A., A.N.Z.I.A.

**Registered Architects.**

111 Customhouse Quay, 721 N.Z. Insurance Bldgs.,  
Wellington. Auckland.

Tel. 1547 Tel. 4304

**RICHARD O. GROSS,**

**Sculptor.**

Having extensive Studio and Workshop experience,  
carries out work in all materials.  
Architects' Details carefully executed.

21 Station Street, Newmarket,  
AUCKLAND.

Telephone 3193

**William M. Page**

**Registered Architect**

F.N.Z.I.A. LICENTATE R.I.B.A.

Royal Exchange Buildings,  
115, Custom House Quay,  
Wellington.

Telephone 3534

**Leslie D. Coombs,**

A.R.I.B.A.,

**Architect**

Corner of Octagon & Stuart St.,  
Dunedin

THE ROOF OF AGES—

## MALTHOID

ROOF your new building with MALTHOID.

REPAIR your old roofs with MALTHOID.

RIP that rusty, leaky iron off and re-cover with the best—MALTHOID.

## MALTHOID

is an Excellent, Enduring Floor Covering  
**For FACTORIES, OFFICES, DWELLINGS.**

Call or write us for prices and further particulars.

Obtainable from leading Hardware Stores and Merchants.

**AUBREY GUALTER & CO.**

149-151 Featherston St.,  
Wellington.

## McCarthy's Family Hotel

Taupo Quay,

**WANGANUI**

C. J. MCCARTHY, PROPRIETOR

## Steel Constructional Work for Architects, Contractors, Etc.

Joists, Beams, Stanchions, Compound Girders,  
Solid Steel Columns, Steel Roof Trusses  
Galvanised Roofing Iron, Ridging, Spouting,  
— — — Downpipes, etc. — — —

**Full stocks. Quick deliveries.**

**A. & T. BURT, LTD.**

Auckland, Wellington, Christchurch, Timaru,  
Dunedin, Invercargill.

London Office: Eldon St. House, E.C.