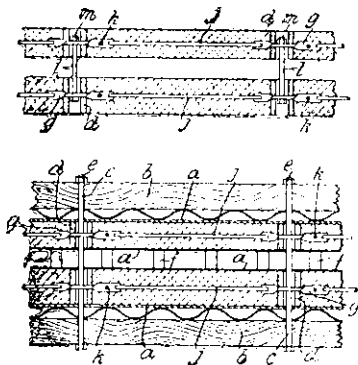


and (or) clay, burning the same in an oxidising atmosphere at a temperature of about 1,500deg. C., and then mixing it with a relatively small quantity of previously dehydrated Portland or like cement, moistening the mixture, pressing it into moulds, immersing the moulded bricks in cold water for several hours, and air-drying them at a temperature only slightly above freezing-point.

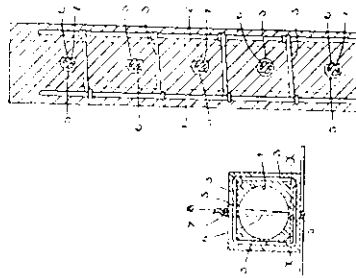
Concrete Wall.—A patent, No. 44,843, has been taken out by G. H. Forester, of England, for a new method of building a concrete wall. According to this invention, a device for use in the construction of walls consists of a tube, which may be of concrete or cement, having a bar projecting from each side. In the case of a hollow



wall, sets of two tubes are placed in alignment, one in each part of the wall, each tube being of a length corresponding with the width of each of the parts of wall respectively. The plates or boards which form the moulds for the walls are tied together by rods which pass through the tubes which form distance-pieces between the outer and the inner plates or boards. After the concrete of which the walls are formed has set, the

rods and the plates or boards are removed, and screw-bolts are inserted into the tubes, passing through holes in the bars projecting from them and secured by means of nuts which engage with the bars. Ties securing the two walls together are thus formed. Single walls may be made in similar manner. In all cases holes may be made in the parts of the bars which project from the tubes, and adjacent tubes are connected together by horizontal reinforcing-bars, whilst vertical reinforcing-bars are inserted through the holes.

Concrete Fencing Post. A patent, No. 45,160, has been taken out by A. M. Mackay, of Patangata, Hawke's Bay. According to this invention, the post is made hollow, and is reinforced by rods running lengthways therein, the said rods being bound together or connected by horizontal reinforcements. A horizontal hole is made through both sides of the post for each fencing-wire it



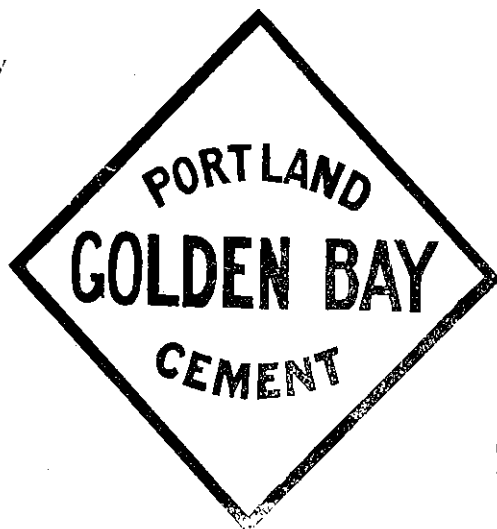
is desired to attach thereto. The fencing-wires are attached to the post by short pieces of wire, which, after being doubled around the fencing-wires, are passed through the holes in the post, and the legs twisted together around a vertical rod at the rear of the post.

Concrete Pipe.—A patent, No. 43,498, has been taken out by W. H. Stevens, of Hamilton, civil engineer. The conduit, which is formed preferably of concrete or

GOLDEN BAY CEMENT

Universally
Used.

Tested under every
working condition.



Sets like a
Rock.

Quality proved
by results

THE GOLDEN BAY CEMENT WORKS, LTD.
Nathan's Buildings, Wellington.

REESE BROS.

CANTERBURY AGENTS