

will occupy, and a fair proportion of the flats have already been booked on this basis. The flats will be about the same size, but a higher value is put on those which will face the harbour than on those which will not have this view. The building planned has six storeys. The design has a suggestion of the Gothic style, but otherwise is of a simple character, embodying the latest ideas in lighting and ventilation. Indeed, each flat will have at least two balconies. The building will cover an area of 64ft. by 64ft. Messrs. McDonald, Mullions, and Sholto Smith, architects, are the designers.

The sum of £4,000 has been donated for the building of a Methodist Church in Remuera. The church will be built of brick and tile.

#### CHRISTCHURCH.

Tenders are invited by Mr. Cecil Wood, A.R.I.B.A., for the erection of a new building for the Public Trust Office, closing on August 15th.

The plans of the Concert Hall to adjoin the proposed new Municipal Buildings on the Canterbury Hall site have been approved by the Special Committee, and, when passed by the Council, will be included in the loan proposals for the new block.

Messrs. J. S. and M. J. Guthrie invited tenders last month for the new Boys' High School buildings at Riccarton; also for Old Boys' Memorial Arch.

Messrs. Collins and Harman invited tenders recently for alterations and additions to School of Engineering, Canterbury College.

Messrs. England Bros. invited tenders early this month for the erection of a house at St. Martin's.

A new church (St. James) is to be erected at Lower Riccarton to take the place of the one recently burnt down. At a recent meeting the vestry decided that the foundation stone for a new church should be laid within two months. It was moved: "That arrangements can be made immediately to proceed with the erection of a permanent church; that this meeting is of the opinion that a more suitable site should be acquired for the said church; that a committee be set up to give effect to the above resolution."

An Associate of the New Zealand Institute of Architects (under Section 8 (I) (H).) seeks a position as

#### DRAUGHTSMAN OR ASSISTANT

in Architect's Office.

Reply to

"RETURNED SOLDIER,"

C/o Progress.

#### CHRISTCHURCH CITY COUNCIL.

THE CHRISTCHURCH CITY COUNCIL invites applications for appointment to the position of

#### CITY ENGINEER AND SURVEYOR.

Salary, £800 per annum.

Copies of the conditions and forms of application may be obtained at the Town Clerk's Office at Auckland, Wellington, Dunedin and Christchurch.

Applications must be endorsed "City Engineer and Surveyor," and be forwarded to the Town Clerk, Christchurch, not later than the 24th August, 1921.

H. R. SMITH,  
Town Clerk.

Christchurch,  
1st August, 1921.

## "ESITOL"

### Kills the Borer!

#### Important to Architects and Builders.

In the construction of new buildings it is important to note that if the timber, before being built in, is given one coat of "ESITOL," the wood will be immune from attack by Borer, as well as from Dry Rot, Wet Rot and the formation of Fungi.

"ESITOL" is also a Wood Preservative far superior to Creosote or any similar preparation. It is non-inflammable and serves also as a Decorative Stain or Paint.

Send for Pamphlet of this new and remarkable discovery of industrial Science.

Sole Agents:

UNIVERSAL SALES AGENCY, LIMITED,

Express Company Buildings,

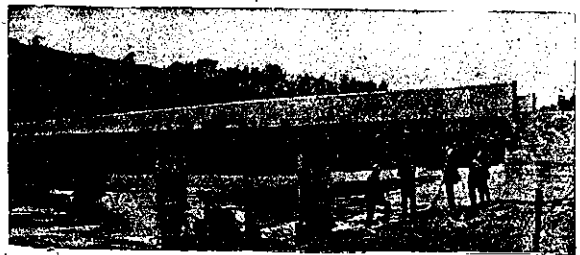
BOND STREET - - - DUNEDIN

## W. A. CHOTE LTD.

FARISH STREET

WELLINGTON

PHONE 763



Victoria Bridge, Moonshine, Upper Hutt.

### BUILT WITH REINFORCED CONCRETE

Another Everlasting Monument to  
the SUPERIOR QUALITIES of

## Golden Bay Cement

Also Agents for:—MILBURN LIME, J. J. CRAIG'S HYDRAULIC LIME,  
BRUNNER FIRE BRICKS, FIRE TILES & FIRE CLAY CHIMNEY POTS,  
DRAIN PIPES.