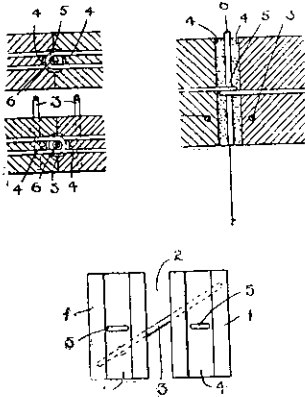


## Patents of Interest to Builders.

**Hollow Concrete Wall.**—A patent, No. 43,593, has been taken out by Walter Platt, contractor, Farm Road, Northland, Wellington. The blocks are formed with grooves in their vertical edges and have loops projecting horizontally from said grooves. The blocks are moulded in pairs or with a block to form part of the outer shell of a wall directly opposite a block to form part of the inner shell, the two blocks being connected by ties cast



therein, said ties inclining upwards from the block of the outer shell to the block of the inner shell. The blocks are laid horizontally with the grooved vertical edges butting against the grooved vertical edges of adjacent blocks, so that the horizontal loops of each block overlap or are overlapped by the horizontal loops of the adjacent blocks. Vertical reinforcing-means, such as rods, are then inserted in the overlapping loops and grouting poured in the joints.

**Concrete Structure.**—A patent, No. 43,659, has been taken out by Robert Wilson, Hobart, Tasmania, which comprises mould-plates on angle-irons disposed between and slidably attached to upright standards or supports

## CLASSIFIED ADVERTISING

Advertisements accepted under this heading cannot be displayed, but are set solid in 8 point type.

Rates: One penny per word per insertion. 10% reduction for 3 consecutive insertions, 15% for 6, and 20% for 12 insertions. Minimum charge 2/6 per insertion.

The purpose of this department is to put the reader in touch with advertisers who offer the latest needs for Home, Office or Factory—and to place prospective employers and employees in touch with one another.

### Advertising

The classified columns offer the small advertiser an opportunity to place his name before our readers at an exceptionally low cost. Send in your advertisement to-day so that it can appear in our next issue.

### Glass Merchants, &c.

**Hill & Jackson,** Wholesale and Retail Glass Merchants, Leaded Light Manufacturers, Oil and Colourmen. Plate, Sheet and Ornamental Glasses stocked. Estimates and Designs submitted for all classes of Leaded Lights. Enquiries solicited. Address: 11 Ghuznee Street, Wellington. Phone 1836.

### Locks and Keys

**Arthur J. Wycherley,** Lock and Key Specialist, cuts keys to any pattern. Safe and Post Office Box Keys promptly duplicated. Every description of Locksmith's Work thoroughly entered for. Mail orders receive prompt and careful attention. Address: King's Chambers, Wellington. Phone 568. P.O. Box 645.

AT LAST!

Science has produced a composition that absolutely and positively

## Kills the Borer!

A BOON BEYOND ESTIMATION FOR NEW ZEALAND.

# ESITOL

Mr. C. S. Hicks, M.Sc., A.I.C., F.C.S., Government Analyst, the great authority on New Zealand woods in regard to Durability Treatment, reports, after testing and analysing "Eistol":—

"Eistol" would render wood immune from attacks of the White Pine Borer, and would be toxic (poison) to any other wood-boring insect."

Now on the market for the first time!

Obtainable from all Ironmongers, Painters, and Storekeepers.

Wholesale Depot: Universal Sales Agency Ltd., Express Co. Buildings, Dunedin.

## W. A. CHOTE LTD.

FARISH STREET " " WELLINGTON

PHONE 763



Victoria Bridge, Moonshine, Upper Hutt.

## BUILT WITH REINFORCED CONCRETE

Another Everlasting Monument to the SUPERIOR QUALITIES of

# Golden Bay Cement

Also Agents for:—MILBURN LIME, J. J. CRAIG'S HYDRAULIC LIME, BRUNNER FIRE BRICKS, FIRE TILES & FIRE CLAY CHIMNEY POTS, DRAIN PIPES.