

Building Notes.

CHRISTCHURCH.

Messrs. England Bros. invited tenders up to late last month for the erection of a Methodist Church in brick on Cashmere Hills.

NEW PLYMOUTH.

Mr. Thos. H. Bates, of New Plymouth, and Messrs. Clere and Williams, of Wellington, invite tenders for the erection of a Club House at the corner of Queen and St. Aubyn Streets, New Plymouth.

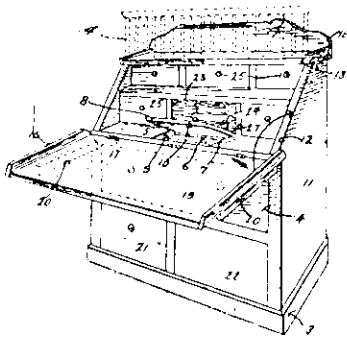
WELLINGTON.

Mr. W. Fielding invited tenders early this month for the erection of a residence at Brooklyn.

The Housing Superintendent of the Department of Labour invited tenders for the erection in Petone of timber frame construction on brick and concrete foundations, labour only and tools required. Also tenders were asked for concrete block construction, labour only and tools required. At Miramar tenders were also invited for a number of houses of concrete block construction.

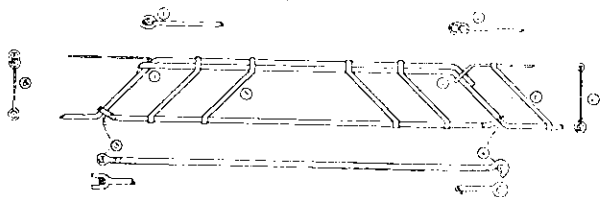
Patents of Interest to Builders.

Kitchen Cabinet.—A patent, No. 44,701, has been taken out by F. G. Blake, of 93 Lewis Street, Gladstone, Invercargill, Civil Engineer. It has a folding sloping top



which forms a table when let down, a central flour-container, drawers and compartments for various requisites, etc.

Concrete Construction Frame.—A patent, No. 43,118, has been taken out by Charles Stephen Mulliner, of City Engineer's Department, Town Hall, Auckland, N.Z., Structural Engineer; February 2nd, 1920. Cantilever-beams may be constructed with longitudinal tension-rods bent up at or near the point of contraflexure and carried



forward one beneath the other with centres of gravity in the same vertical plane, the ends of such tension-rods being secured by external pressure, or by the end of one of the bars on one rod passing round the other rod and being secured by external pressure, or by the end of one rod being bent down over or under the second rod and secured by a band either on the end of the top compression-rod or by a separate band passed round the two

PHONE 1649

F. de J. Clere

F.R.I.B.A., M.C.I., LOND.

Dewellwyn E. Williams

A.R.I.B.A., M.C.I., LOND.

CLERE & WILLIAMS,
ARCHITECTS AND STRUCTURAL ENGINEERS,
157 FEATHERSTON STREET,
WELLINGTON, N.Z.

LIFTS

There are many Points of Superiority in the High-grade Lifts for

PASSENGERS or GOODS

Made by

A. & P. STEVEN, Provanside Engine Works, GLASGOW

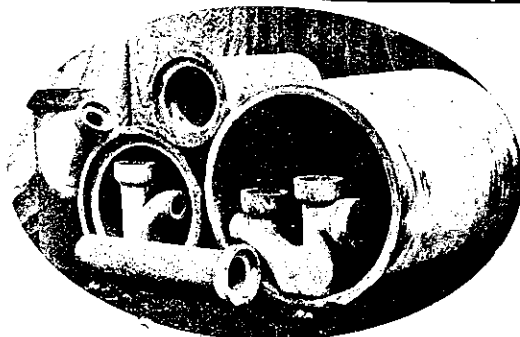
whose equipment has an enviable reputation for Reliability and Efficiency. Installed for H.M. the King, the Admiralty, Glasgow Corporation, and many other users who insist on the best obtainable.

Further information, Catalogues and Quotations from the Sole Agents:

TOLLEY & SON, LTD

26 HARRIS ST., WELLINGTON

— P.O. Box 665. —



CEMENT PIPES

have proved the best for SEWAGE and ROAD CULVERTS. In sizes from 4 inches to 42 inches in diameter. STRONG and EVERLASTING. Improve with age. We make Concrete Posts and Strainers, Pig Troughs, Salt Pans, Garden Rollers, Flaps, etc., etc. Factories: Masterton, Hastings, and Waitara. Full particulars—

The Cement Pipe Co., Ltd., Masterton.