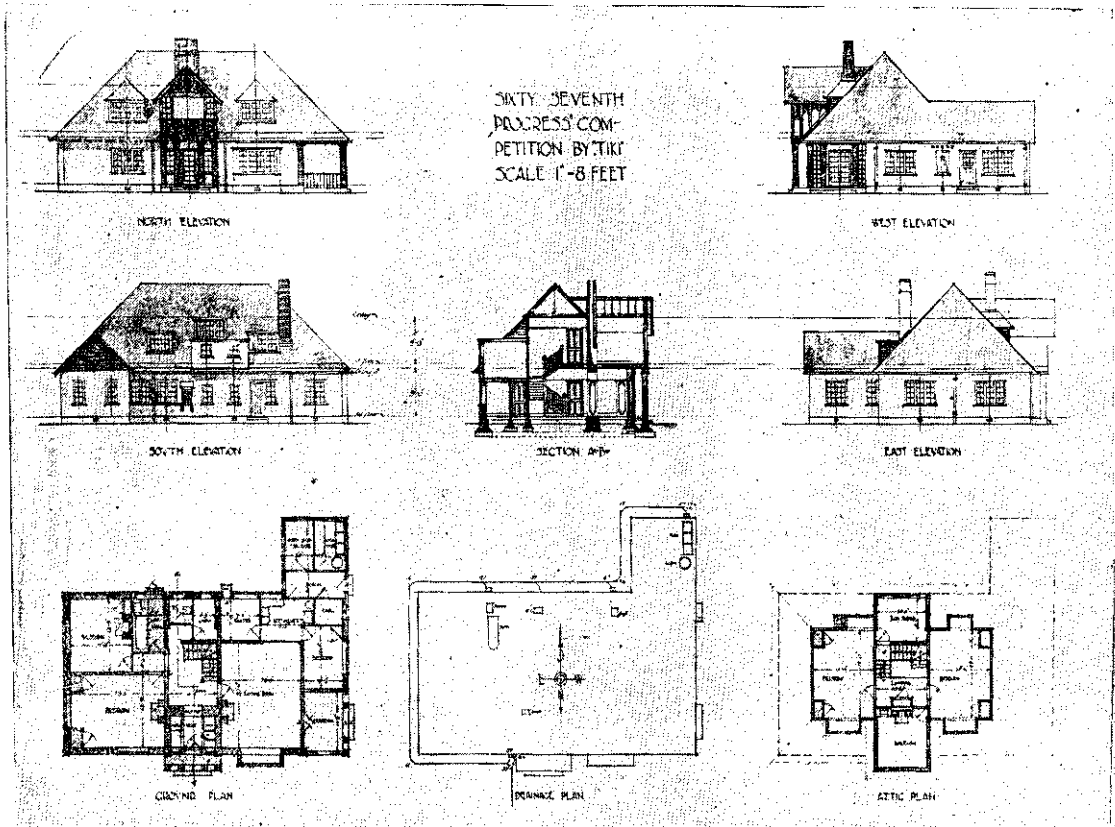


which points should not be sacrificed for the sake of external effect. The flues also would be hard to sweep. The windows in the bay are not high enough to adequately light a room 20ft. deep. The windows on the south side of the bedrooms should all have been omitted, and dormers placed in the east and west ends. According to the plans, morning and afternoon sun is lost, and the cold south winds admitted. The whole of the south windows on ground floor should be placed higher up from the floor; they would then be far more convenient for work. The fireplace in balcony was not asked for, but evidently the omission of a semicolon has accounted for this mistake in all the competitors'

drawing would be much improved by showing the brick joints on the walls in watered ink, and indicating the roof tiles by trechand wavy lines, etc.

"'Roughcast' (placed second).—This design has many points in its favour, but the planning of the hall, passage, and landing is poor and the space wastefully great. A small compact hall looks much better than a long one, and saves a great deal of cleaning. The small bedroom off kitchenette should not be called a 'maid's' bedroom, as in such a house where no kitchen is provided it would not be possible to keep a maid. A ladyhelp or similar type would suffice, if possible to get one. The



Winning design in our 67th Competition, "Tiki," by B. W. Johns, with Mr. Wm. M. Page, Lic.R.I.B.A., of Wellington

plans. The box room is much larger and higher than necessary, and has completely spoilt the back elevation. There was plenty of space in the roof, without breaking through at all. The sink asked for should have been on the landing, not the balcony. A very careless mistake has been in showing practically all the doors opening the wrong way. It is a universally accepted principle that the bed should be shielded, in place of which 'Tiki' exposes them all. It would be advisable to glaze part of the west side of the verandah, to give protection from the S.W. storms. Finally, the back porch is too wide, 3ft. 6in. being ample, and, in fact, a little ingenuity could have shortened it also. 'Tiki's'

pantry door should be close to the sliding door, or even opening off the living room, for convenience. The partition would be better in brick. The kitchenette would stand being rather larger than the condition suggested. The stair balustrade was meant to be 'close,' i.e., lined up close, with no openings for dust—(another mistake). No. 1 bedroom door is shown opening direct on to the front hall, which is not ideal, and No. 2 bedroom door is hinged so as to expose the bed. (It is advisable to show the position of all beds on the plans.) A 9 feet ceiling is quite high enough. Also the ground floor being raised 3 inches above the ground seems very unnecessary, unless floods are expected. The glazing